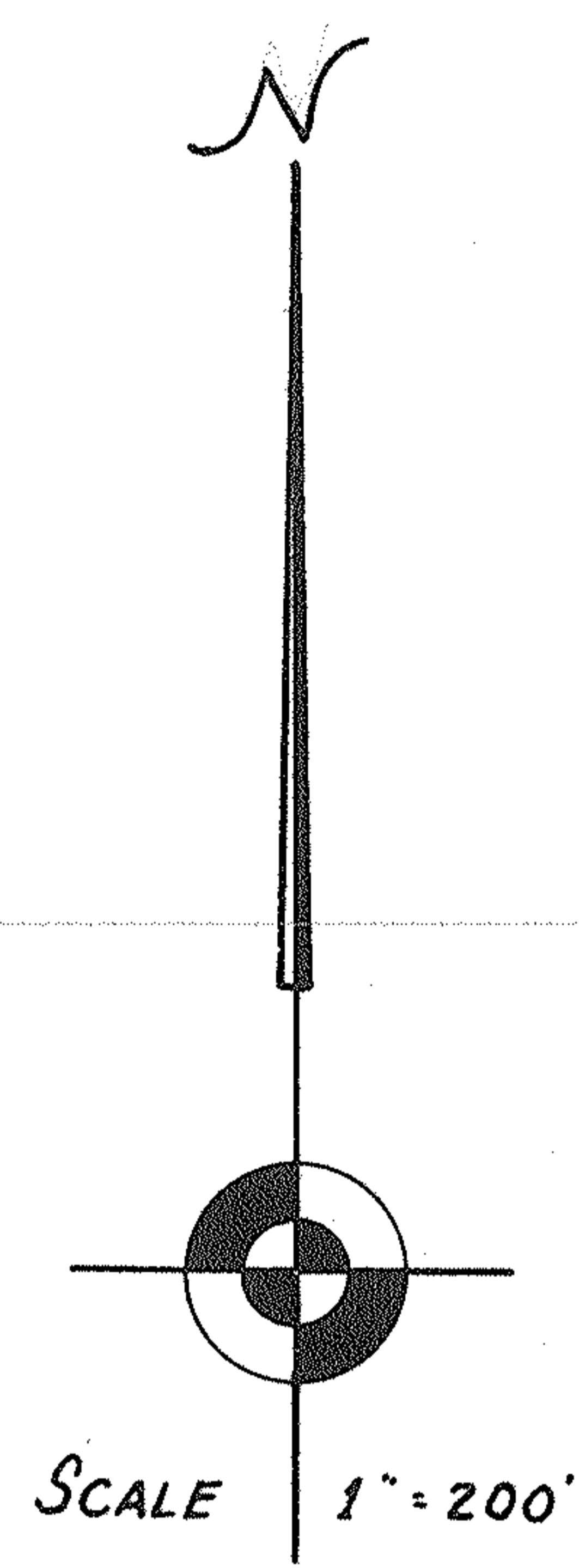
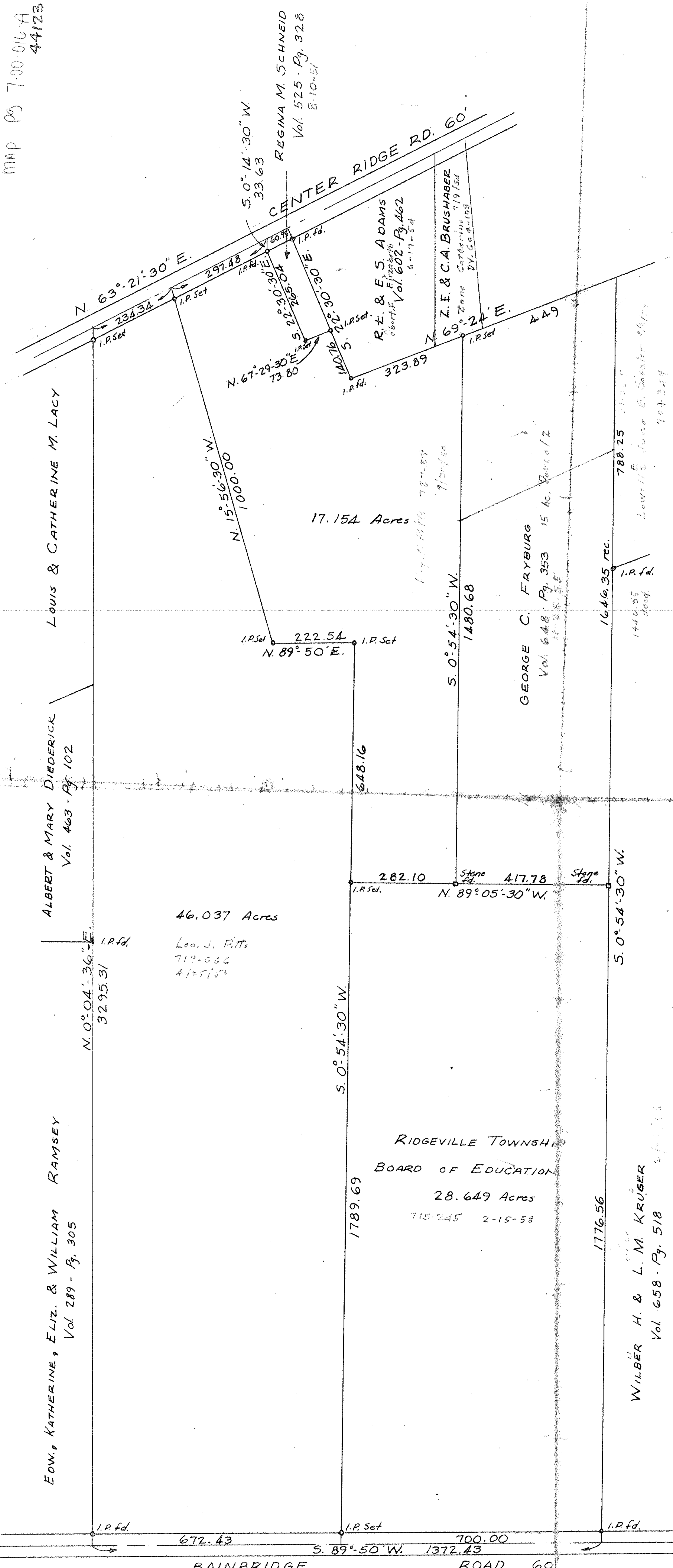


07-00-016-104
7-00-016-A

PPN 07-00-016-104-222
MAP P5 7-00-016-A
44123



SURVEY OF ALOYS PITTS FARM
 PART OF O.L. 16 RIDGEVILLE TWP.
 LORAIN COUNTY OHIO
 MARCH 15, 1958
 T.W. LAUNDON REG. SURVEYOR

ALL IRON PINS SET OR FOUND SHOWN THUS -o-
 Revised 9/20/60

RIDGEVILLE TOWNSHIP
 BOARD OF EDUCATION
 28.649 Acres
 715-245 2-15-58

LOUIS & CATHERINE M. LACY

ALBERT & MARY DIEDERICK
Vol. 463 - Pg. 102

EDW., KATHERINE, ELIZ. & WILLIAM RAMSEY
Vol. 289 - Pg. 305

REGINA M. SCHNEID
Vol. 525 - Pg. 328
8-10-57

R.L. & E.S. ADAMS
Vol. 602 - Pg. 462
6-17-54

Z.E. & C.A. BRUSHABER
Vol. 719 - Pg. 154
7-19-54

GEORGE C. FRYBURG
Vol. 648 - Pg. 353
15-10-52

WILBER H. & L.M. KRUGER
Vol. 658 - Pg. 518
2-15-58

BAINBRIDGE ROAD 60