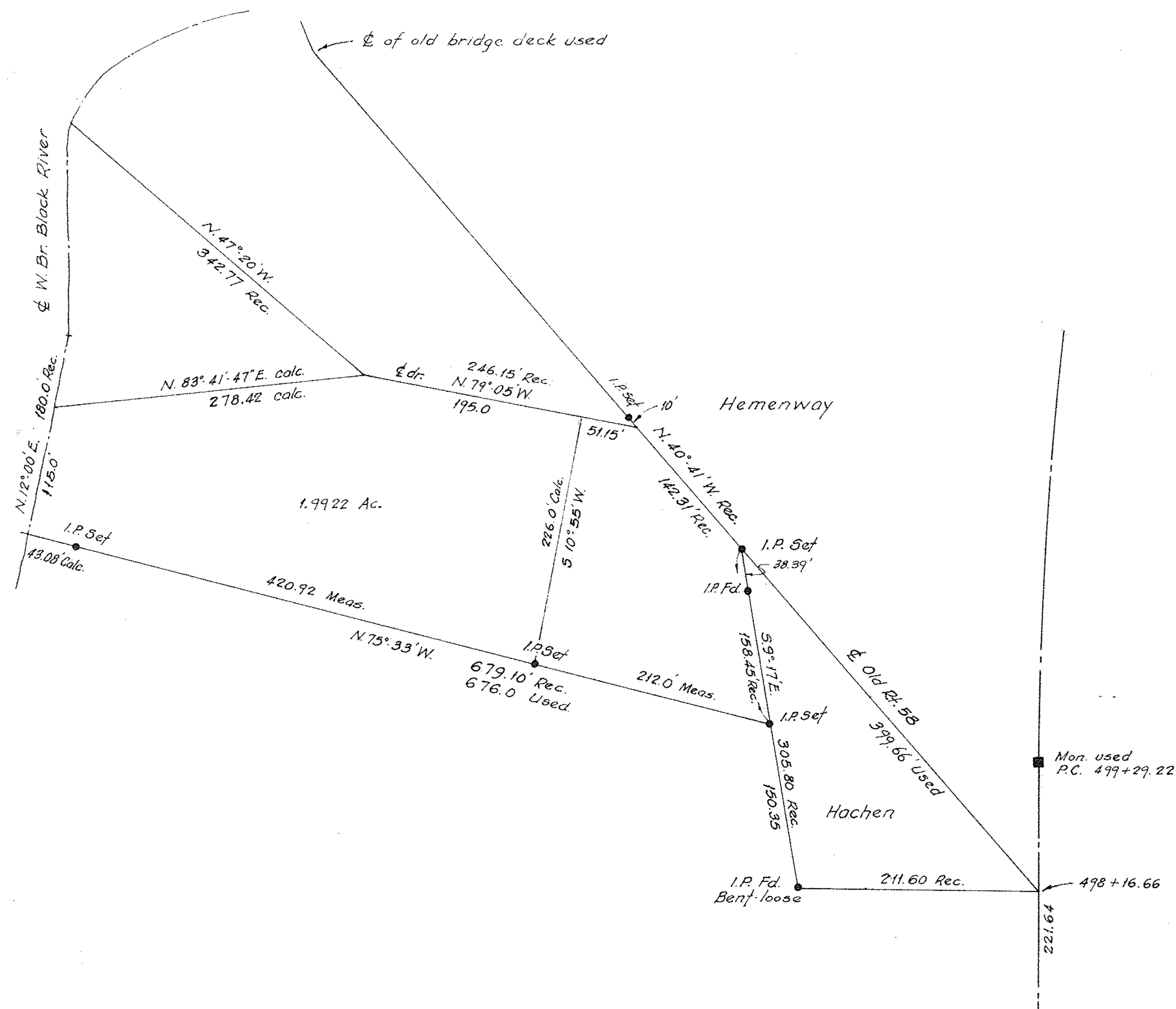


14-00-156-000-002
 14-00-156-000-003
 14-00-156-000-004
 14-00-156-000-006
 14-00-156-000-007
 14-F
 14-G



Re-establishment of South line
WILBUR F. WILLIAMS
 O.L.'s 155 & 156 Pittsfield Township
 Lorain County Ohio
 Scale 1" = 100' Dec. 1975
 Laundon · Simon · Cahl & Assoc.
 Engineers Surveyors

75-455
 FB. 198/17