

PPN 09-00-093 000-025
026

9-00-093-000-025
9-00-093-000-026
9-00-093-B

MAP PG 09-00-093-B

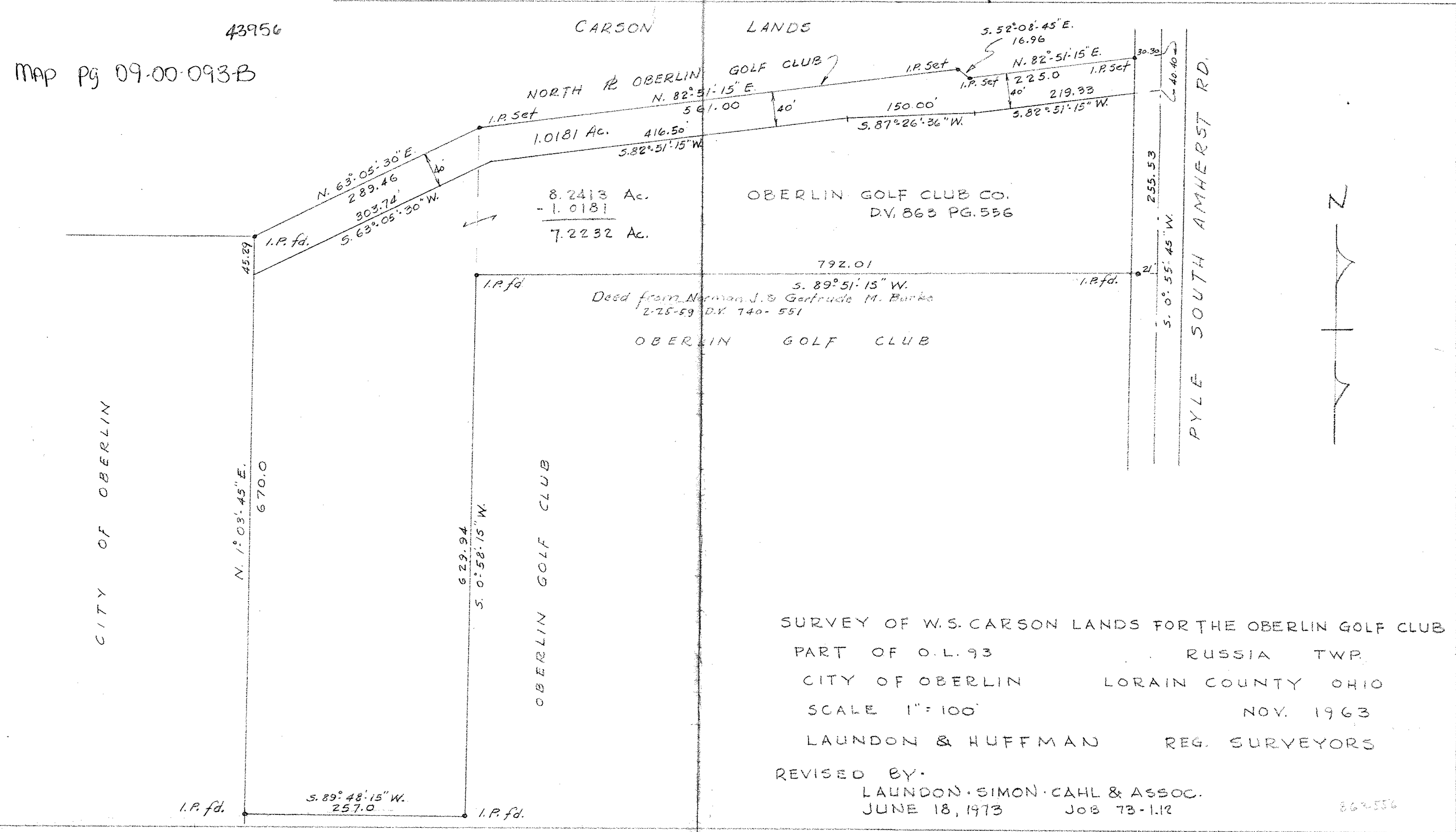
43956

CARSON

LANDS

NORTH OBERLIN GOLF CLUB

GOLF CLUB



8.2413 Ac.
- 1.0181
7.2232 Ac.

OBERLIN GOLF CLUB CO.
D.V. 863 PG. 556

Deed from Norman J. & Gertrude M. Burke
2-25-59 D.V. 740-551

OBERLIN GOLF CLUB

SURVEY OF W.S. CARSON LANDS FOR THE OBERLIN GOLF CLUB
PART OF O.L. 93 RUSSIA TWP.
CITY OF OBERLIN LORAIN COUNTY OHIO
SCALE 1" = 100' NOV. 1963
LAUNDON & HUFFMAN REG. SURVEYORS

REVISED BY:
LAUNDON · SIMON · CAHL & ASSOC.
JUNE 18, 1973 JOB 73-1.12

862556