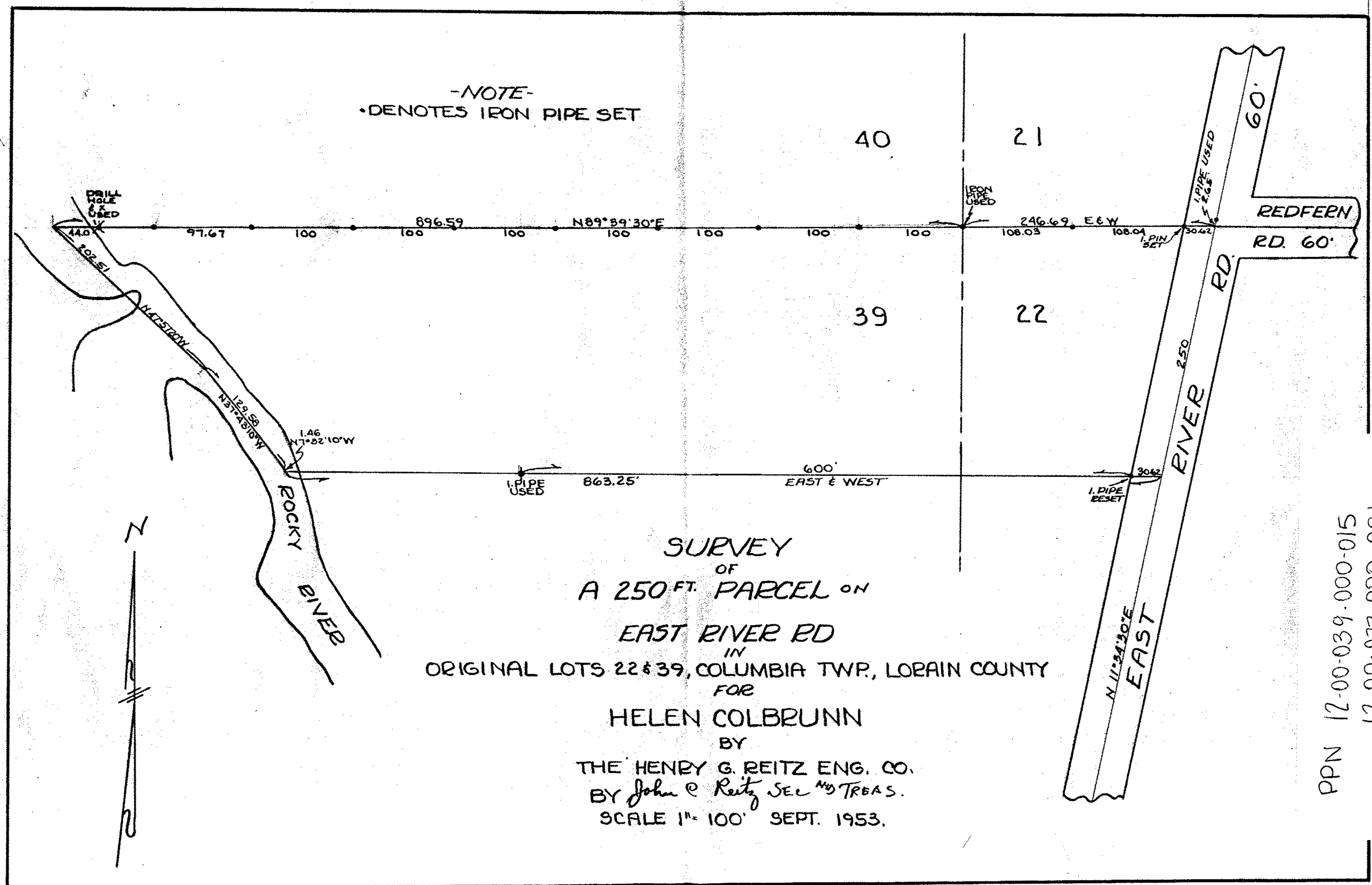


12-00-039-B
12-00-039-000-015
12-00-022-A
12-00-022-000-001



-NOTE-
• DENOTES IRON PIPE SET

SURVEY
OF
A 250 FT. PARCEL ON
EAST RIVER RD
IN
ORIGINAL LOTS 22 & 39, COLUMBIA TWP., LORAIN COUNTY
FOR
HELEN COLBRUNN
BY
THE HENRY G. REITZ ENG. CO.
BY John E. Reitz SEC. & TREAS.
SCALE 1" = 100' SEPT. 1953.

PPN 12-00-039-000-015
12-00-022-000-001

43879

MAP PG 12-00-039-B
12-00-022-A

File 587