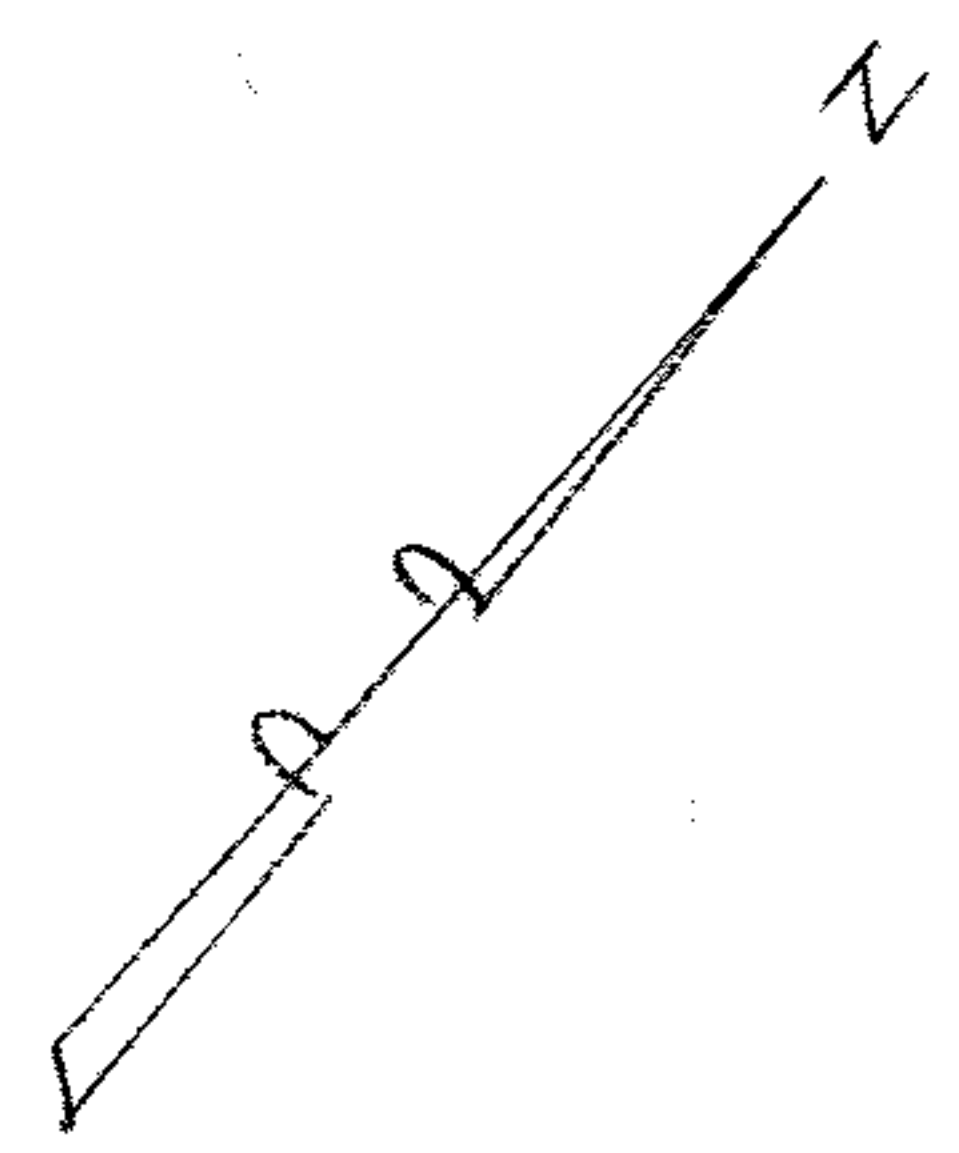


PPN 02-03-002-101-???

MAP PG 02-03-002-A, B

43381

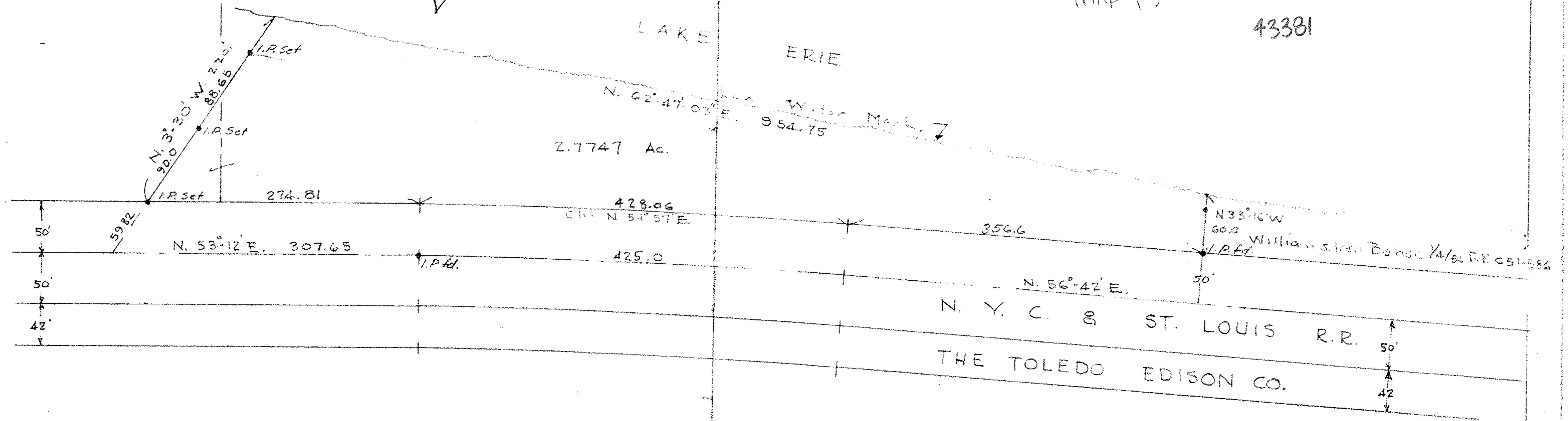
BLOCK A BLOCK D



LAKE ERIE

N. 62° 47' 03" E. 954.75
Water Mark 7

2.7747 Ac.



N. Y. C. & ST. LOUIS R.R.
THE TOLEDO EDISON CO.

SURVEY FOR
 ROY & ROBT. SCHAEFFER
 PART OF BLOCKS A & D - BEAVER PARK SUBN.
 PLAT VOL. 10 - PG. 35 LORAIN CO. REC. OF PLATS
 BEING PART OF ORIG. LOT. 2 TRACT 3 BLACK RIVER TWP.
 LORAIN COUNTY, OHIO - JAN. 1960 - SCALE 1"=100'
 LAUNDON & HUFFMAN - REG. SURVEYORS