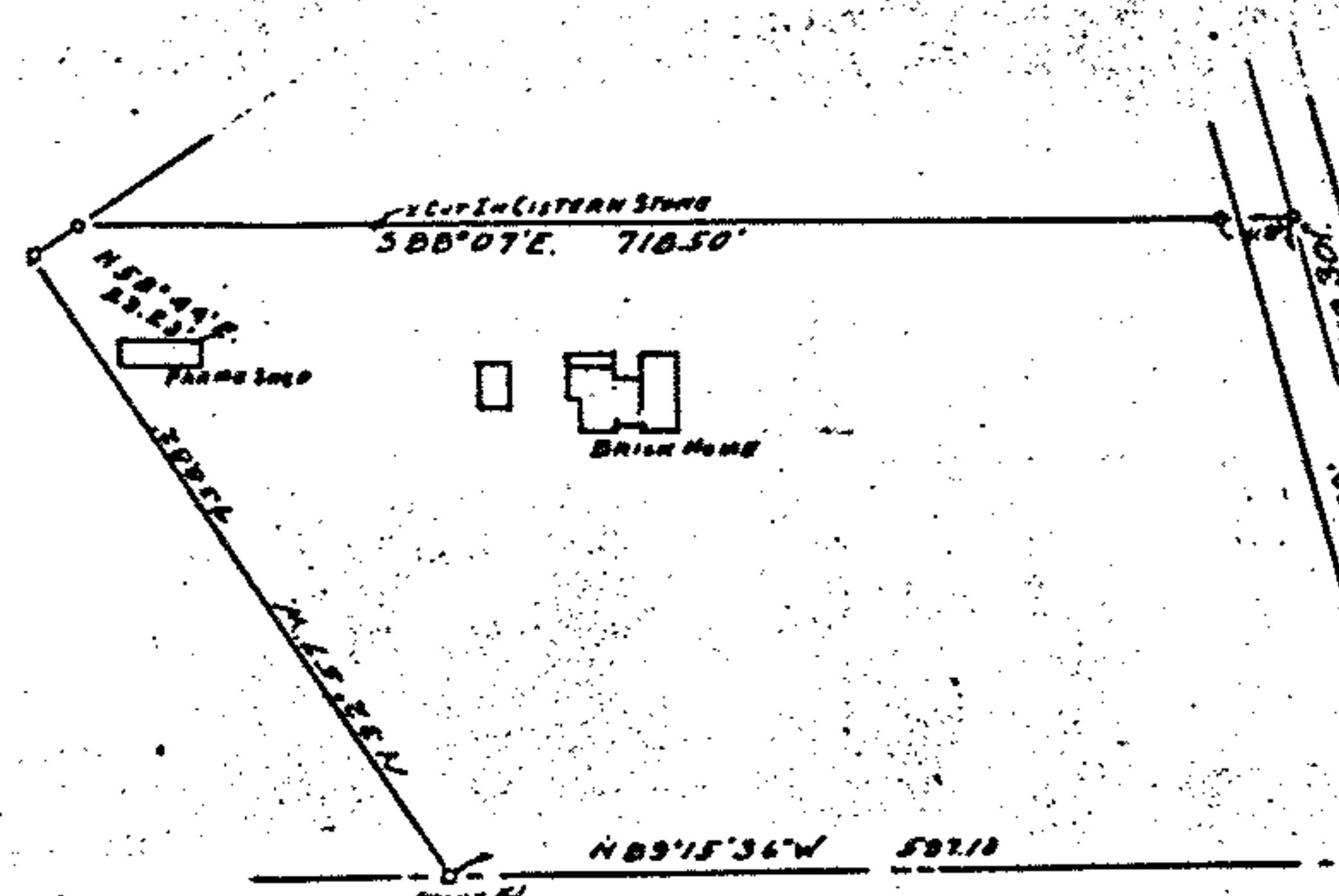


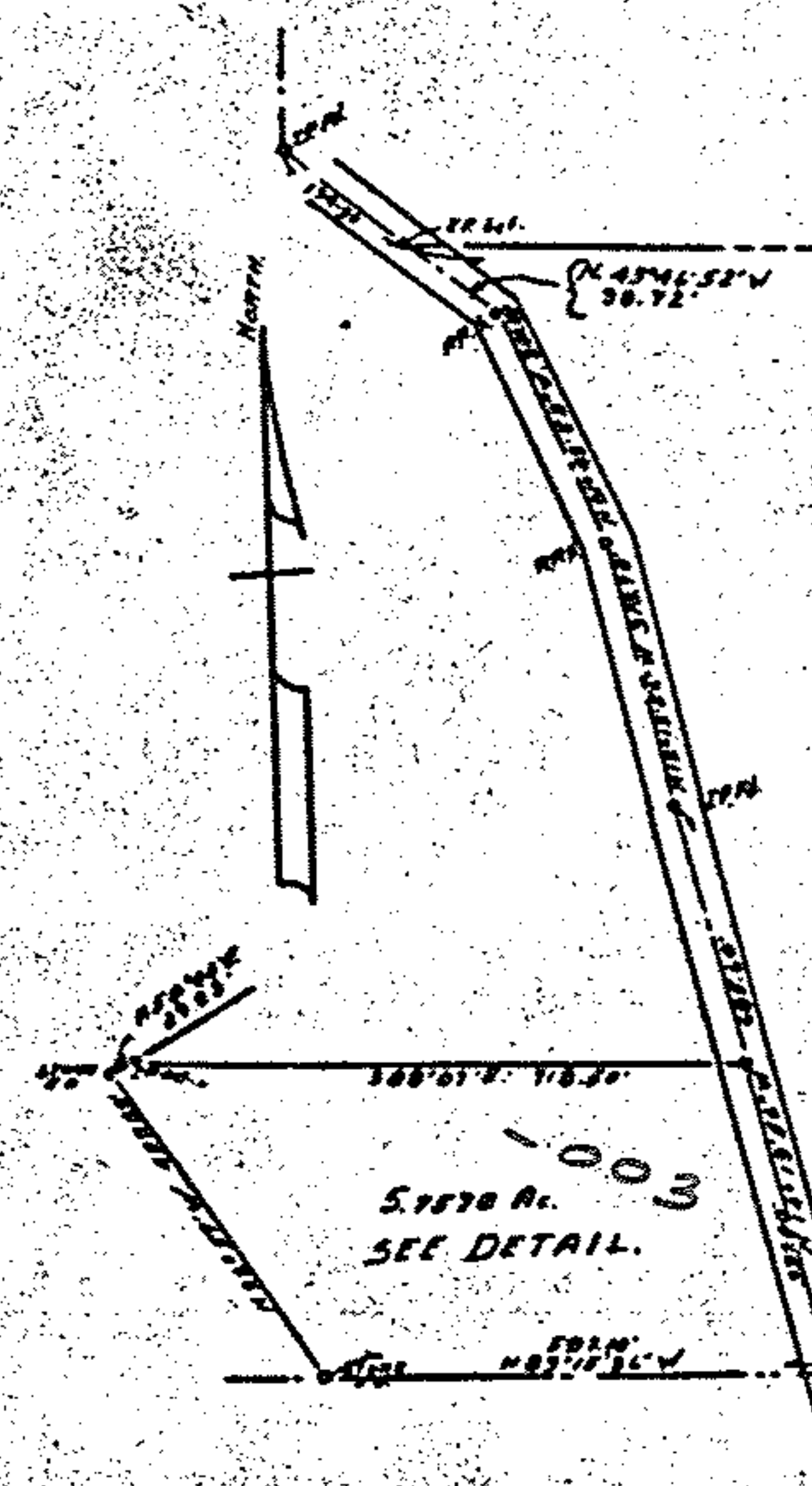
3-G
3-00-021-A, B

03-00-021-000
-065-000

SURVEY FOR BURRELL HEIRS
SHEFFIELD VILLAGE, O.L. Nos. 21 & 65
LORAIN COUNTY, STATE OF OHIO.
SCALE 1"=200' APRIL, 1965
BY RAY E. HOLLIS
CIVIL ENGINEER & SURVEYOR
500 COLORADO AVE. LORAIN, OHIO



"DETAIL" SCALE 1"=100'



5,150 Ac. SEE DETAIL.

3-G
03-00-065-000-004

77.574 Total Ac. O.L. 65
1.51 Ac. IN LE & P.R.R.
76.064 Ac. O.L. 65 To O.P. 5000

5.750 Ac. VAD OF RD. O.L. 65
96.064 Ac. O.L. 65 E.O. 100
140.100 Ac. O.L. 21 E.O. 100
225.522 OWNED BY Burrell
4.62 Ac. P.R.R.
230.542 TOTAL Ac. IN SURVEY

149.21 Ac. Total Ac. O.L. 21
3.11 Ac. IN LE & P.R.R.
146.10 Ac. O.L. 21 To O.P. 5000

SFC 3

3-00-021-A, B

3-00-021-000-001

SURVEY OF BURRELL FARM
FOR BURRELLS & THE BOARD OF PARK
COMMISSIONERS OF LORAIN COUNTY
METROPOLITAN PARK DISTRICT & THE STATE OF OHIO.

PPN 03 00-021-000-???
43379
03-00-065-000-???

MAP PG 3-G
3-00-021-A, B

14