

3-00-022-B

03-00-022-102

H. HILL



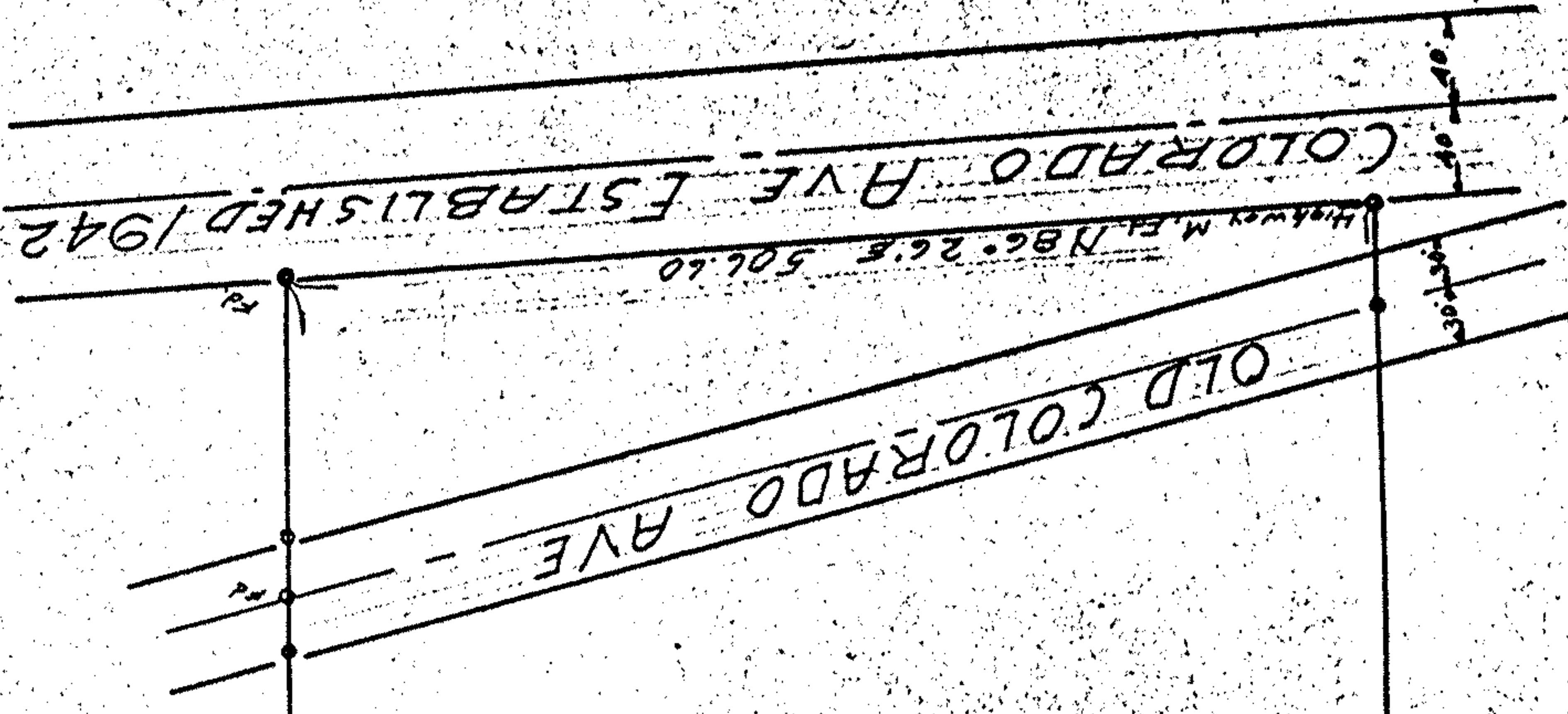
MIKE LATRAN

N. 0° 25' E. 1518.99

SFC 112

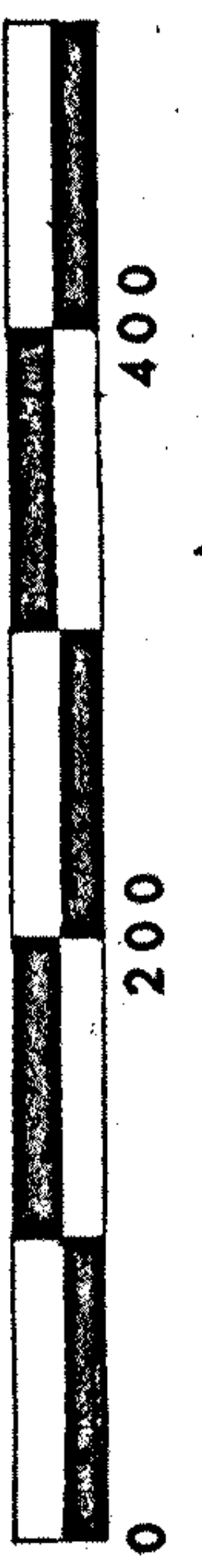
-010
16.651 Ac.

S. 0° 25' W. 1546.68



ANDREW KELLING.
 SURVEY OF PART OF L 22 FOR
 HENRY HILL SHEFFIELD VILLAGE
 LORAIN COUNTY, OHIO.
 SCALE 1"=100' JULY 10 1964
 BY FRAY E. HOLLIS
 REG. CIVIL ENG. & SURVEYOR.

Deeded to Board of Park Commissioners,
 Lorain County Metropolitan Park District
 January 26, 1965.



EAST ST. RR & OL. LINS

107.81
 107.82
 4205

N 89° 26' W 505.49

66