

# GRA-GULL SUBDIVISION PROP

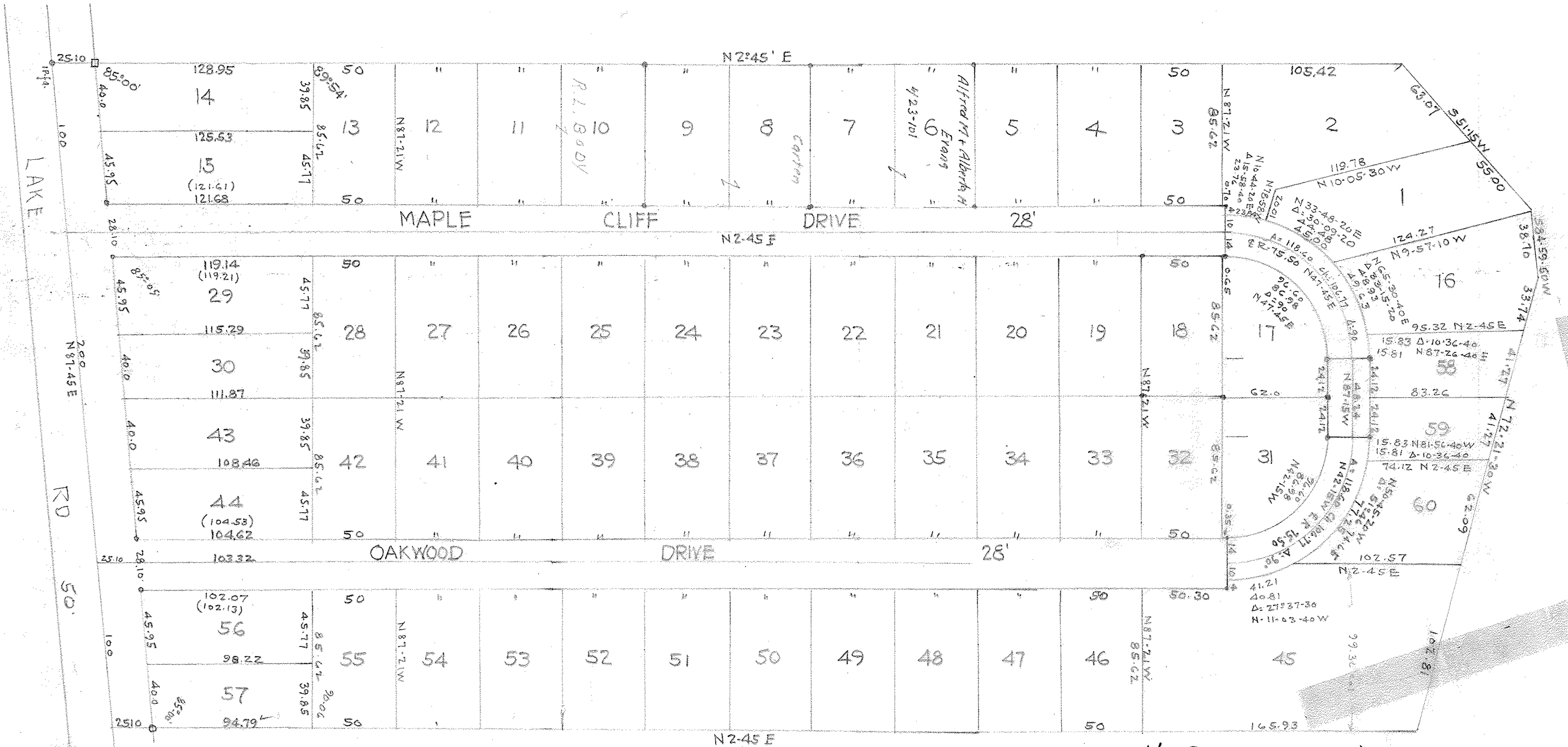
BEING PART OF SECTION NO 18 AVON TWP. LORAIN CO.

W.E HOLLAND ENGINEERING CO  
CLEVELAND.

SCALE 1"=50'

FEBRUARY - 1921

PV. 21/14



MAP PG. 4-00-018-D  
VOL. 20 PG. 14  
VOL. 21 PG. 14