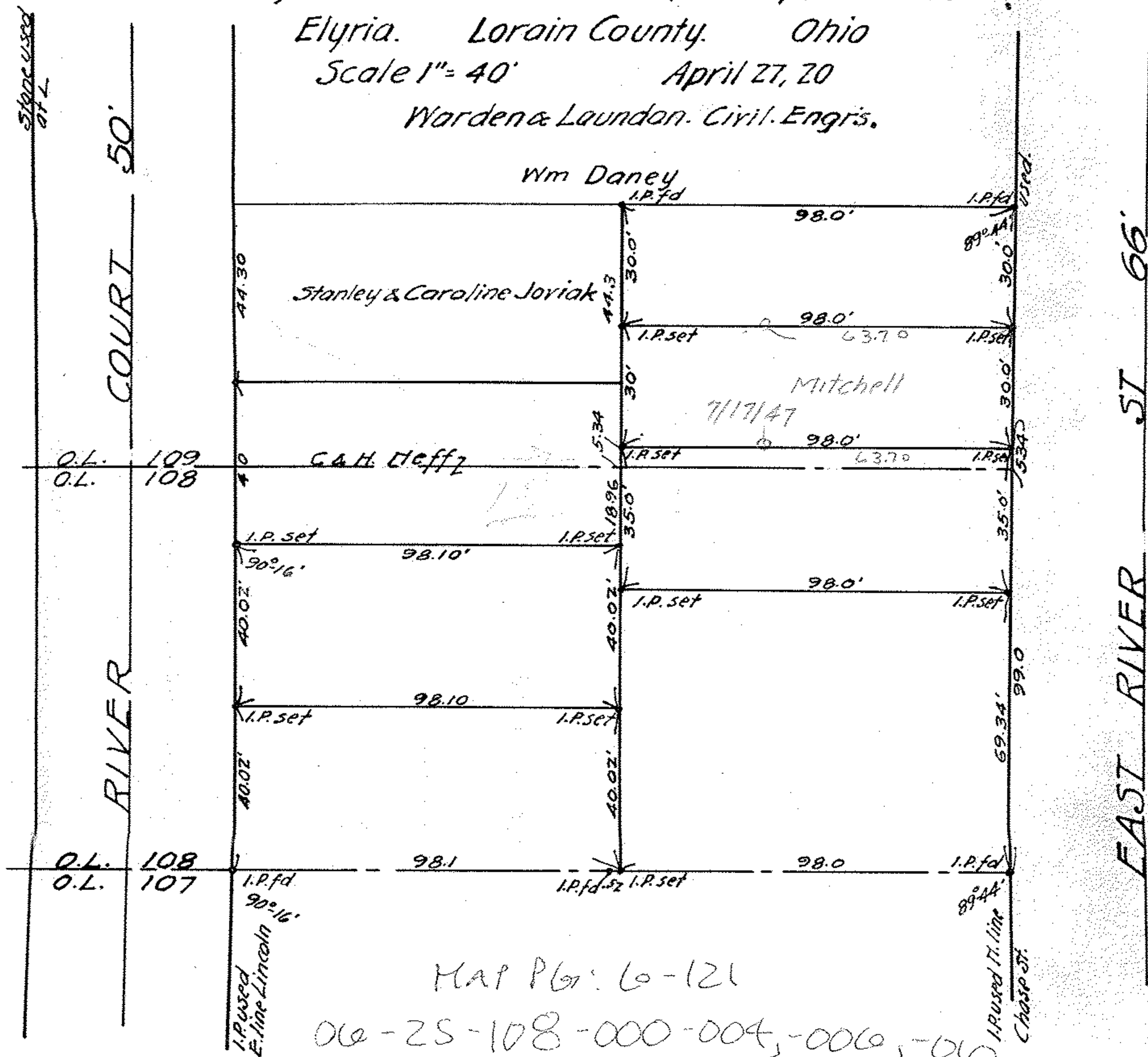


Survey for Florence M. Walton  
 Original Lots 108 & 109 East of E. Br. of Black River.  
 Elyria. Lorain County. Ohio  
 Scale 1" = 40' April 27, 20  
 Warden & Laundon. Civil. Engrs.



666 103 A

3

MAP P6: 6-121

06-25-108-000-004, -006, -010

06-25-109-000-007, -008, -011, -012