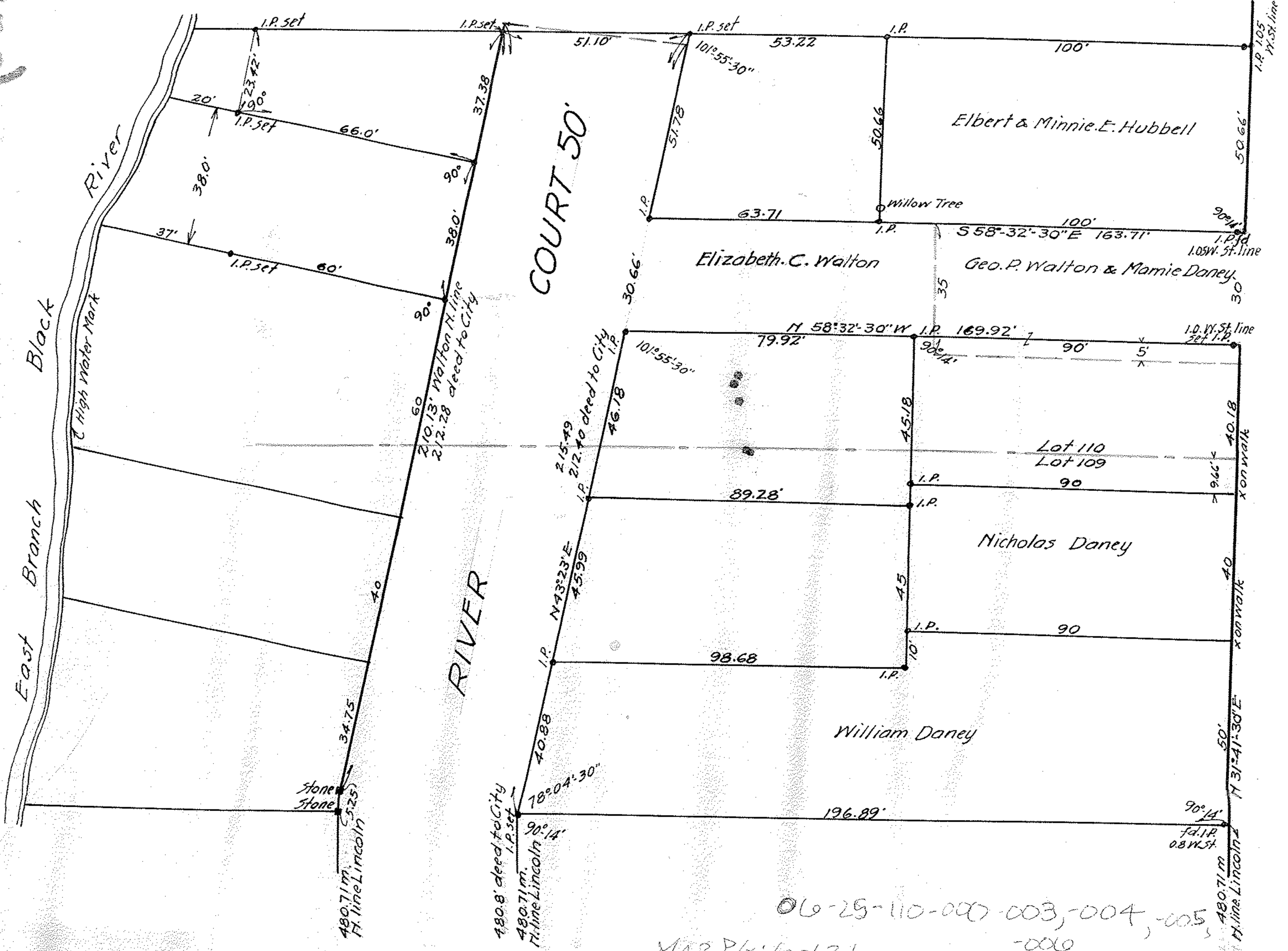


9-103

600103B

SURVEY IN ORIGINAL LOTS 109-110
 E. OF E. BRANCH OF BLACK RIVER
 ELYRIA LORAIN CO. OHIO
 March 30, 1922 Scale 1"=30'
 Warden & Laundon. Engrs.



EAST RIVER ST 66'

I.P. used N.E. Cor. Broad & E. River.
 I.P. used N. side Princeton Ave

06-29-110-000-003, 004, 005
 MAP Pg: 6-121
 -000