

# JOHN W. WARDEN & ASSOCIATES

STATE OF OHIO

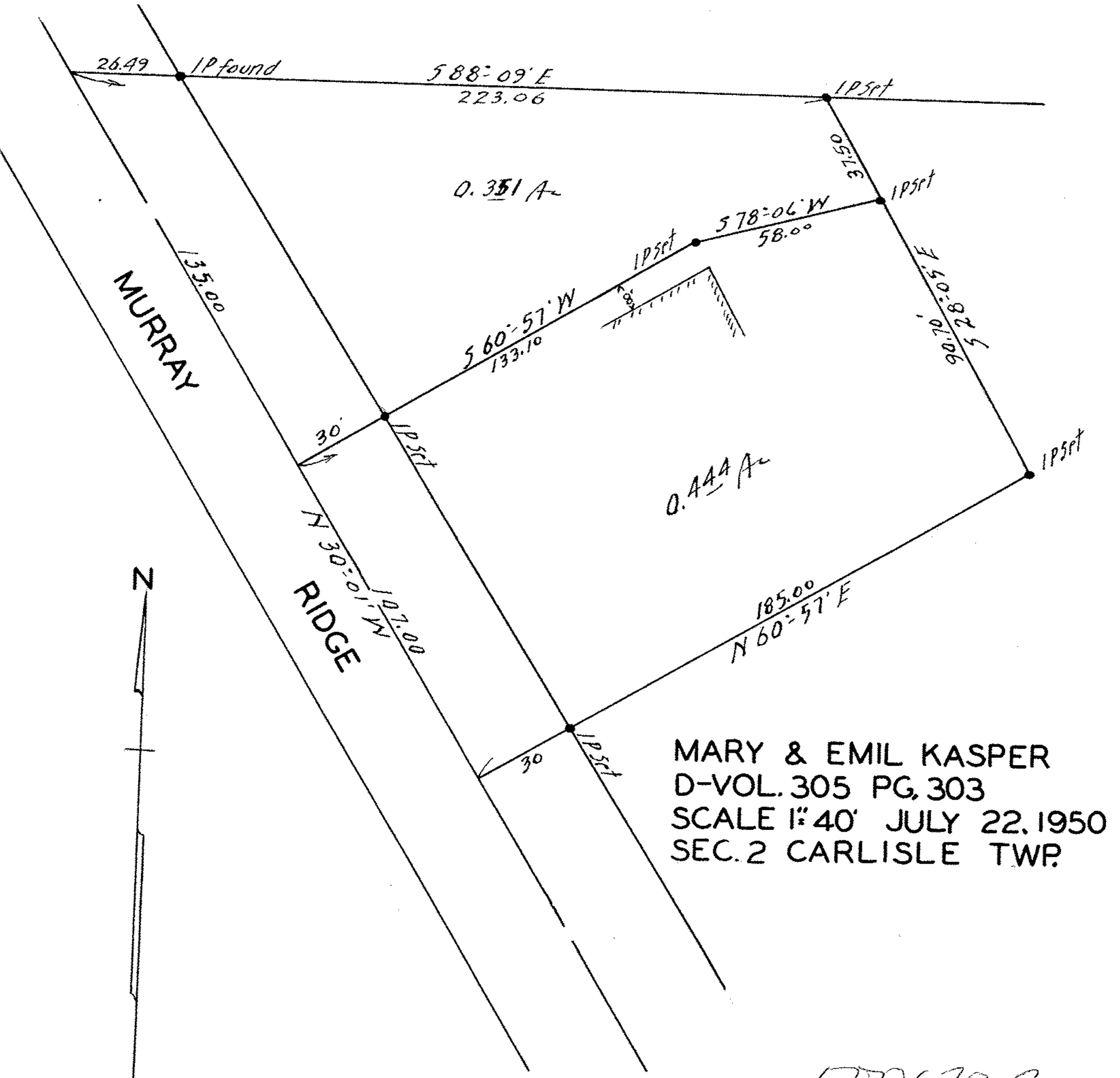
CIVIL ENGINEERS AND SURVEYORS

TELEPHONE 3211

REGISTERED } PROFESSIONAL ENG.  
SURVEYOR

405 ELYRIA BLOCK

ELYRIA, OHIO



MARY & EMIL KASPER  
 D-VOL. 305 PG. 303  
 SCALE 1"=40' JULY 22, 1950  
 SEC. 2 CARLISLE TWP.

10-00-~~002-000-004~~  
 -043 MAP PG: 10-B

500670 B