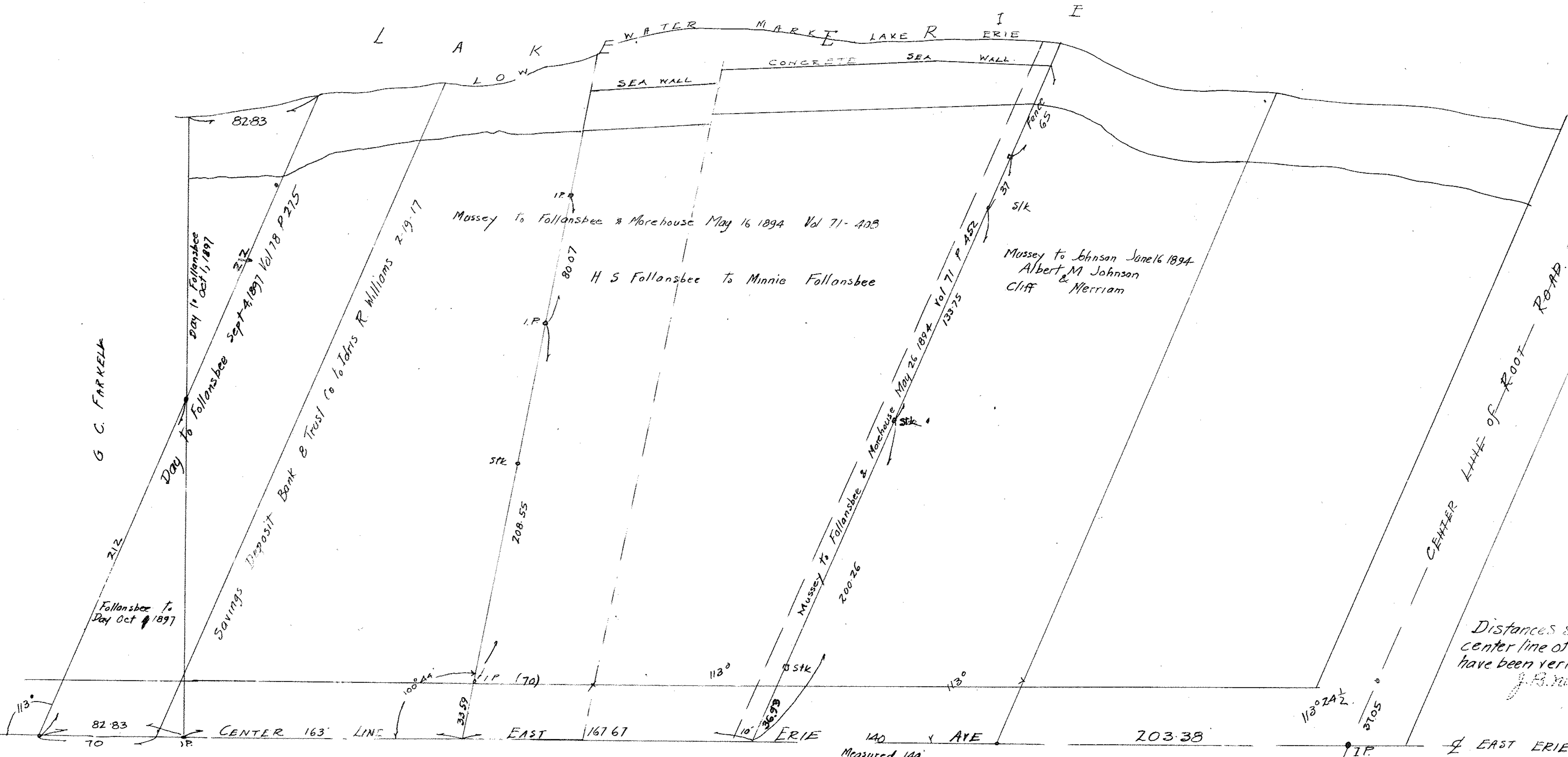


PAUL A RISSMANN, EAST ERIE AVE



Note
 Data hereon was taken from Blue Print brought in by Paul A. Rissman 1926 Aug 2, 1926. There were 16 G. Deed Descriptions shown on Blue Print but I didn't take them.
 Aug 3, 1926
 There was also stated on this Blue Print the following

Distances shown on the center line of E Erie Ave have been verified by me
 J. B. Nichols Surveyor

The measurements as shown on the center line of East Erie Ave are correct
 (signed) by James C. Miller
 City Engineer of