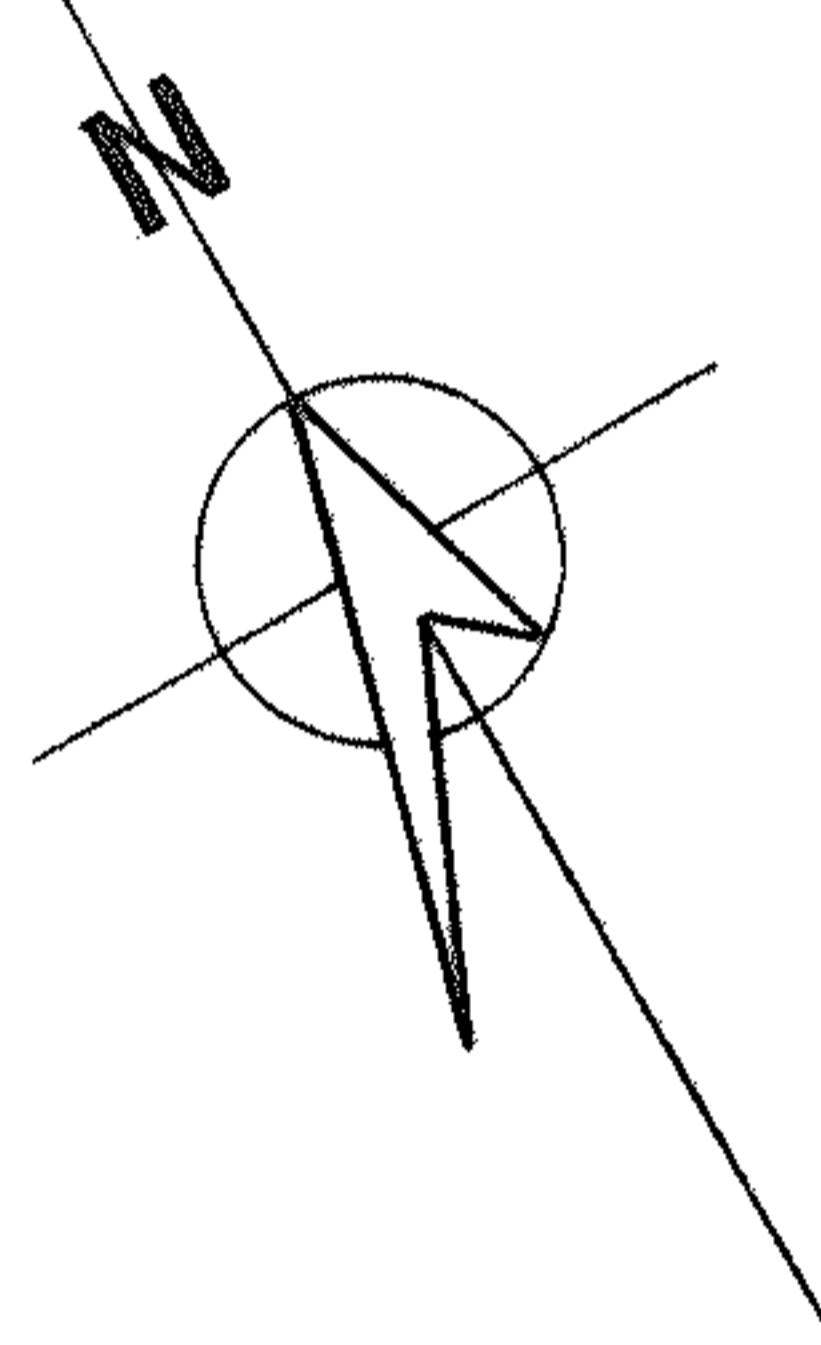
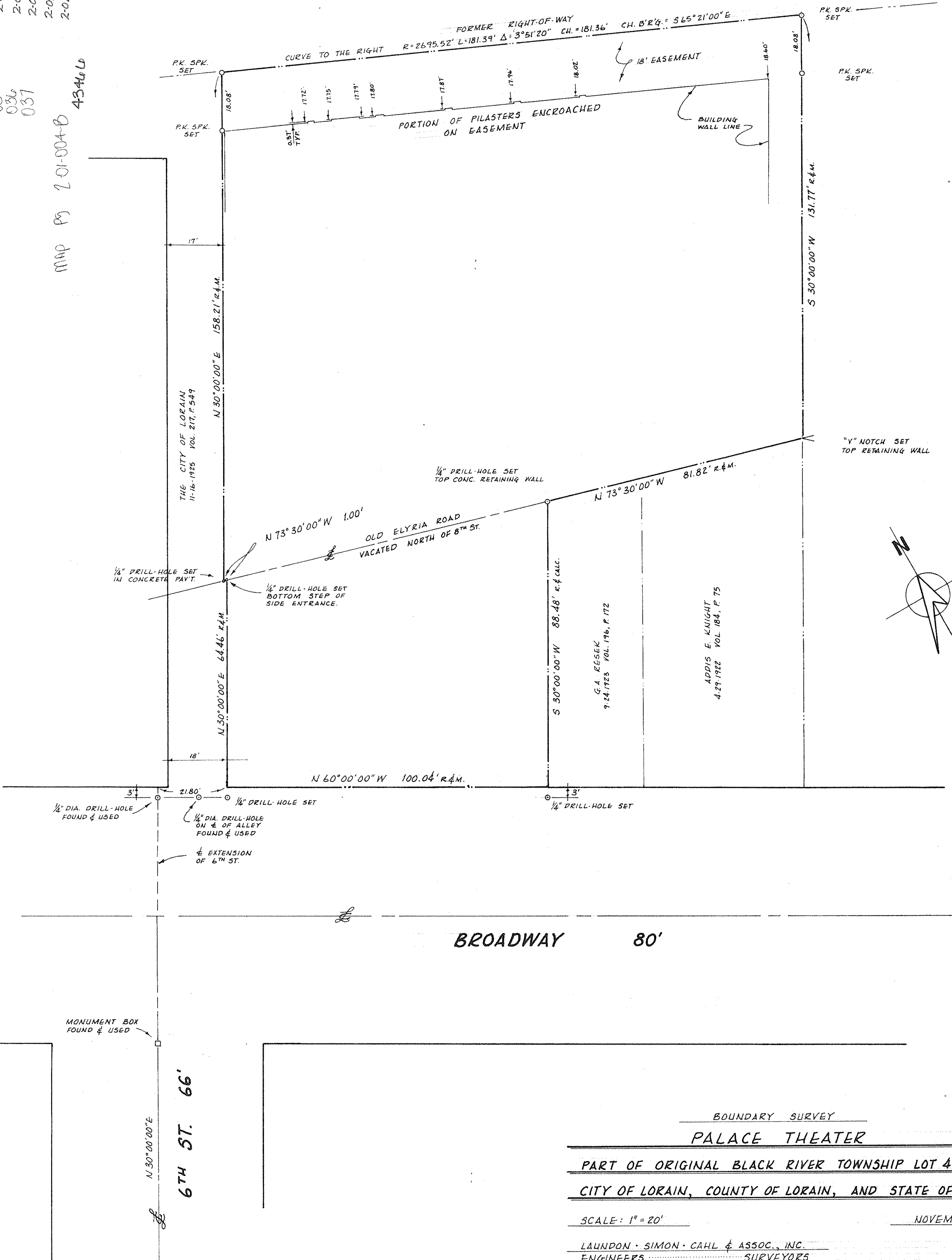


2-01-004-101-034
 2-01-004-101-035
 2-01-004-101-036
 2-01-004-101-037
 2-01-004-B

BALTIMORE & OHIO R.R.

PPN 02-01-004-101-034
 035
 036
 037
 MAP P. 201-004-B
 4346 LB



BROADWAY 80'

6TH ST. 66'

BOUNDARY SURVEY
PALACE THEATER

PART OF ORIGINAL BLACK RIVER TOWNSHIP LOT 4, TR. 1,
 CITY OF LORAIN, COUNTY OF LORAIN, AND STATE OF OHIO

SCALE: 1" = 20' NOVEMBER, 1976

LAUNDON · SIMON · CAHL & ASSOC., INC.
 ENGINEERS SURVEYORS
 504 MIDDLE AVE. ELYRIA, OHIO

Job # 76-560 FB. 199, P. 21