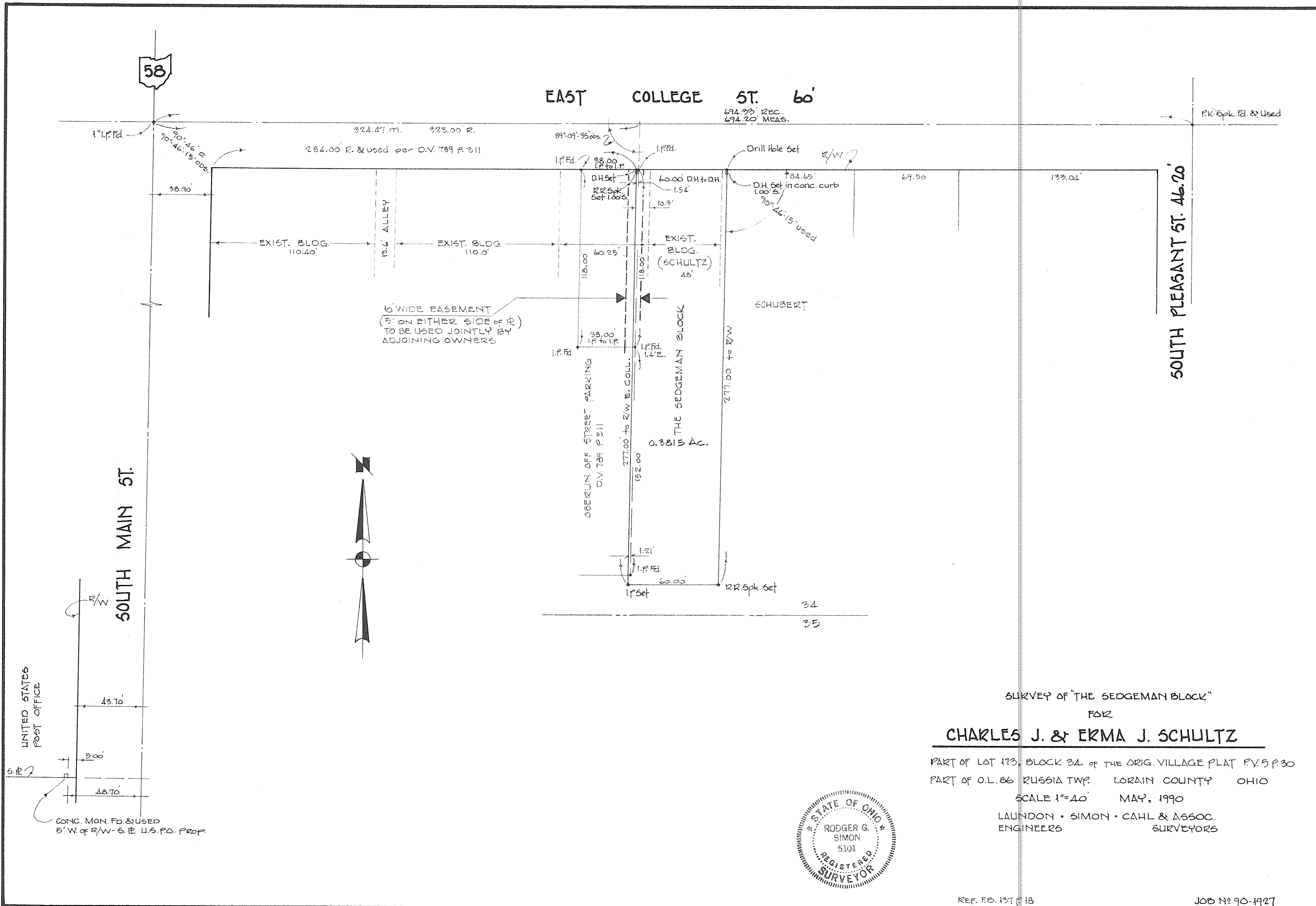


105510



SURVEY OF "THE SEDGEMAN BLOCK"

FOR

CHARLES J. & ERMA J. SCHULTZ

PART OF LOT 173, BLOCK 3A OF THE ORIG. VILLAGE PLAT P.V. 5 P. 30

PART OF O.L. 86 RUSSIA TWP. LORAIN COUNTY OHIO

SCALE 1"=40' MAY, 1990

LAUNDON • SIMON • CAHL & ASSOC.
ENGINEERS SURVEYORS

