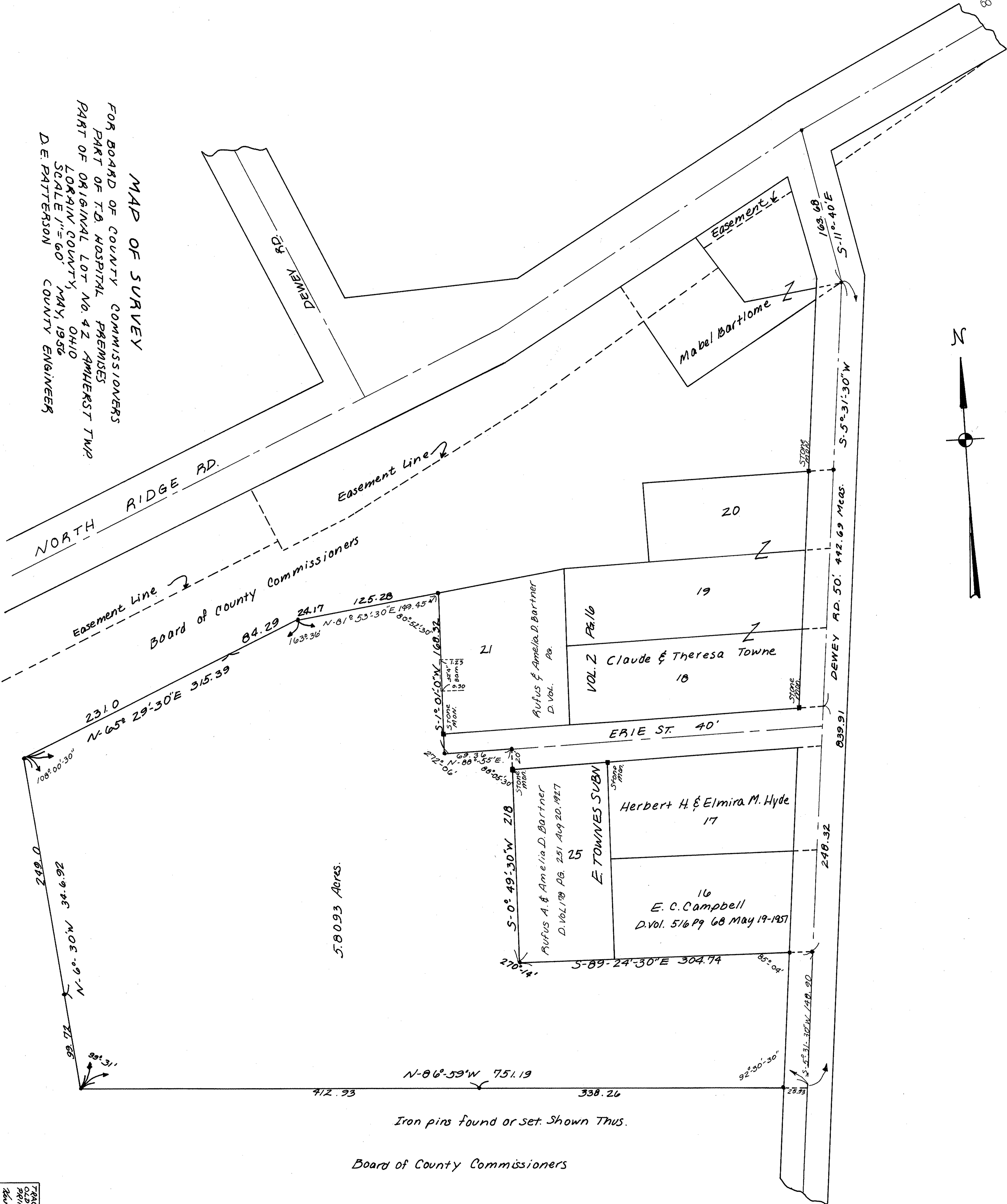


MAP OF SURVEY  
FOR BOARD OF COUNTY COMMISSIONERS  
PART OF T.B. HOSPITAL PREMISES  
PART OF ORIGINAL LOT NO. 42 AMHERST TWP.  
LORAIN COUNTY, OHIO  
SCALE 1"=60'  
D.E. PATTERSON COUNTY ENGINEER



5.8093 Acres.

Iron pins found or set. Shown Thus.

Board of County Commissioners

TRACED OFF  
OLD BLUE  
PRINT 7-21-89  
KAROL L. LEAV