

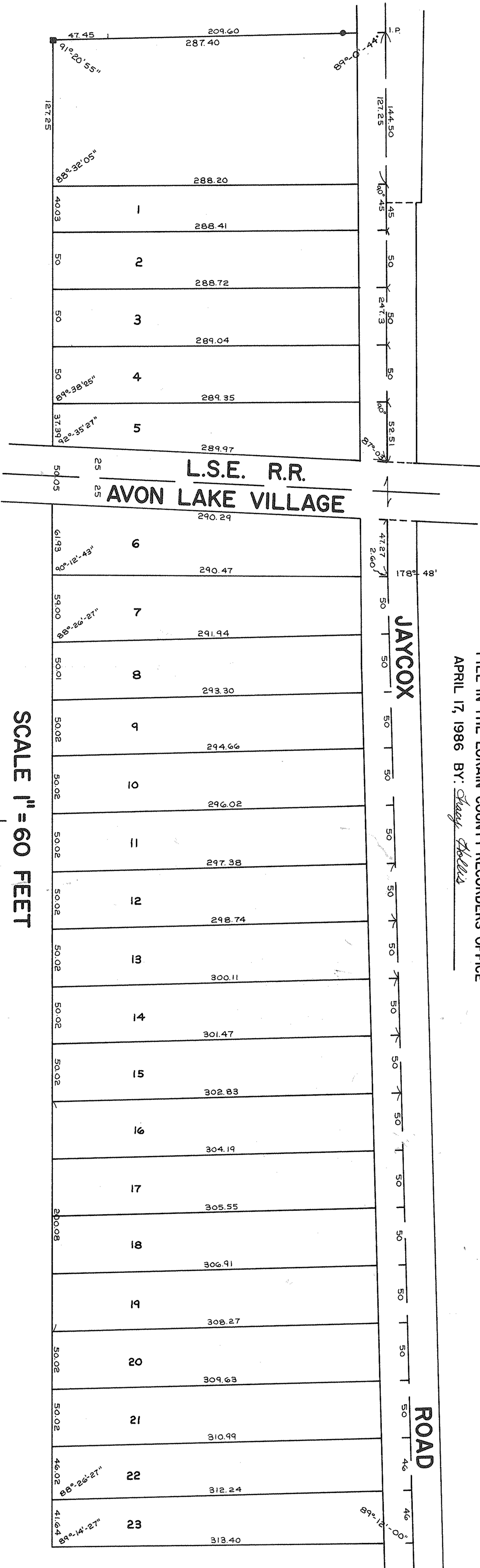
43551

# ORLAND A. PRIEST PROPOSED SUBDIVISION

## O.L. 19 AVON LAKE VILLAGE

TRACING MADE MAY 20, 1953 OF PORTION OF O.L. 19

COPIED FROM A PAPER COPY OF THIS MAP ON  
FILE IN THE LORAIN COUNTY RECORDERS OFFICE  
APRIL 17, 1986 BY: *Cheryl DeWitt*



SCALE 1" = 60 FEET

