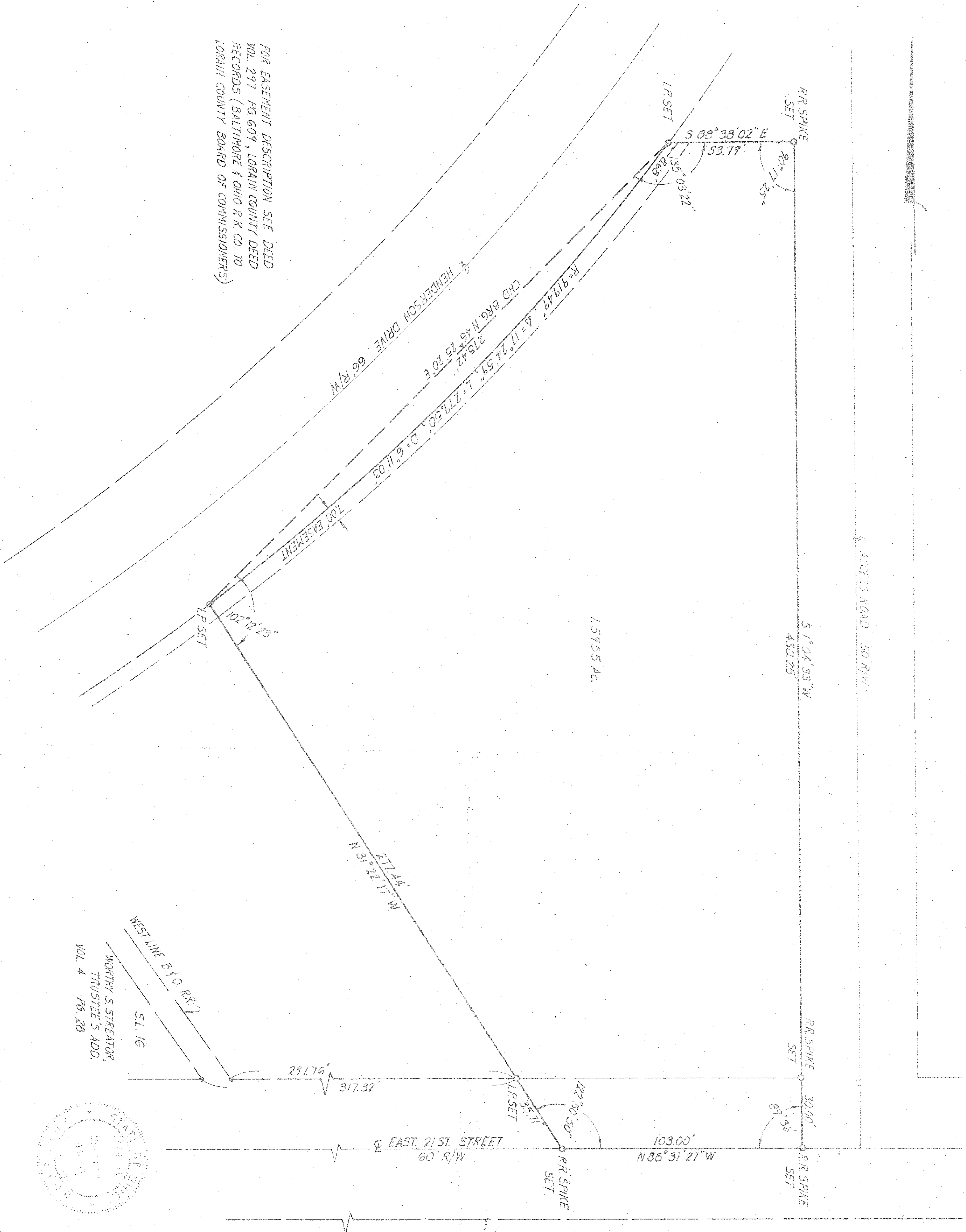
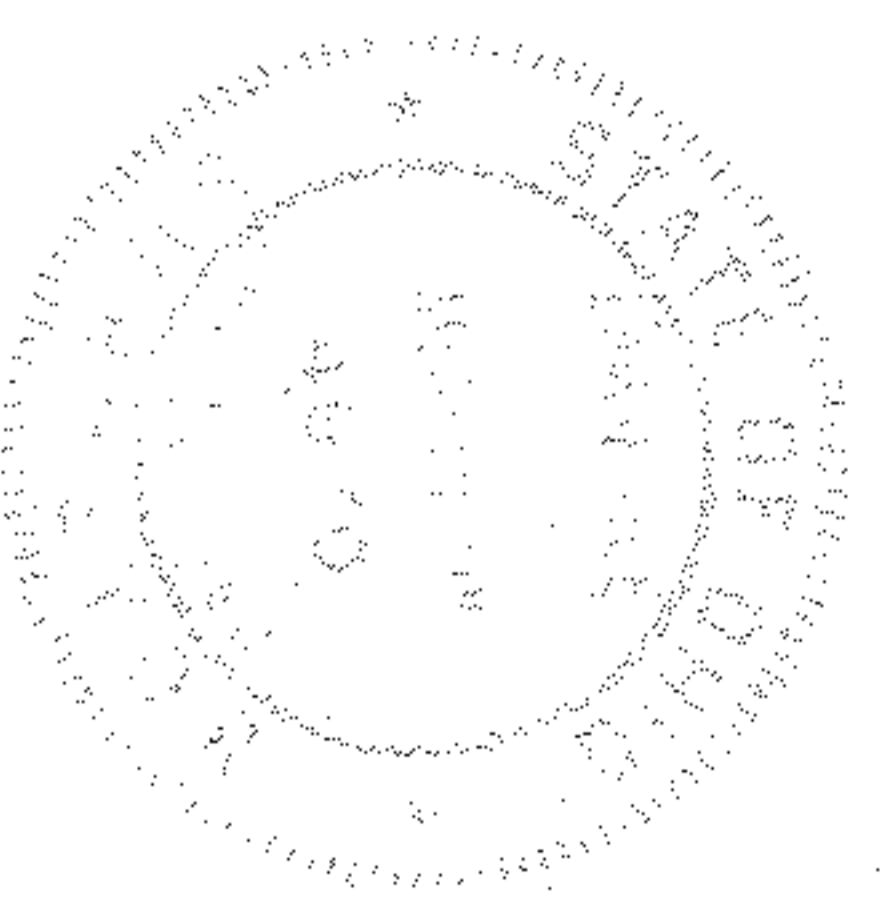


FOR EASEMENT DESCRIPTION SEE DEED  
VOL. 291 PG. 609, LORAIN COUNTY DEED  
RECORDS (BALTIMORE & OHIO R.R. CO. TO  
LORAIN COUNTY BOARD OF COMMISSIONERS)



1.5955 AC.



**NEHE & ASSOCIATES**  
 PROFESSIONAL ENGINEERS - CIVIL  
 ELYRIA, OHIO  
 DRAWN BY: HPC  
 CHECKED BY: HPC  
 APPROVED BY: HPC  
 DATE: JUNE, 1973  
 JOB NO.: 443  
 MAP OF SURVEY PREPARED FOR  
**OHIO EDISON COMPANY - AKRON**