

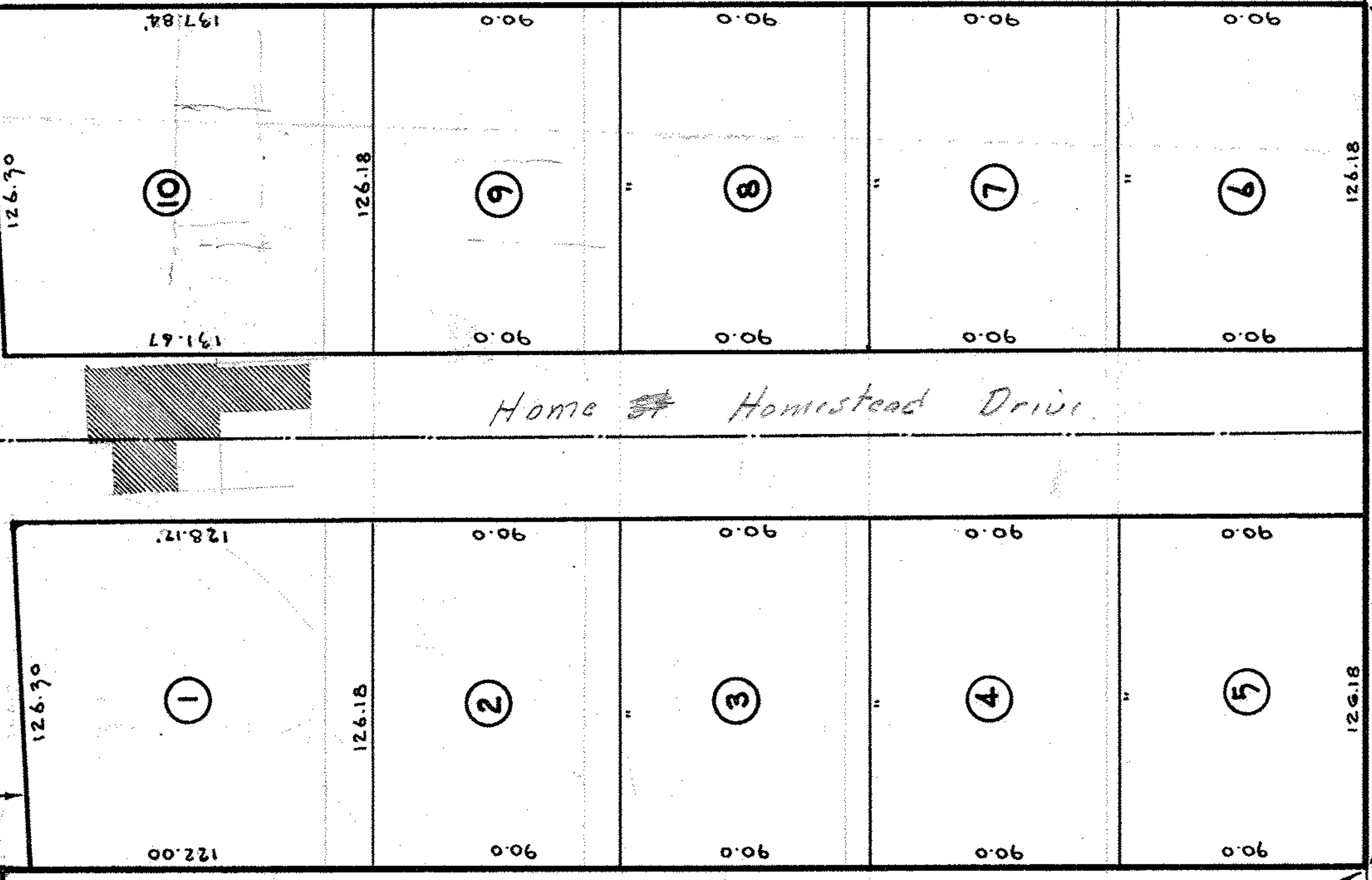
N 2° 35' W 312.69'

ROAD

60'

KOLBE

*cut into 4 lots*



137.84'

131.67'

10

1

126.18'

126.18'

9

2

8

3

7

4

6

5

90.0'

90.0'

90.0'

90.0'

90.0'

90.0'

90.0'

90.0'

126.18'

126.18'

N 89° 55' W 537.89'

N 89° 55' W 522.05'

N 0° 13' E 312.35'

PAID

SUBDIVISION STUDY  
ORIGINAL LOT #1, TRACT #3  
BLACK RIVER TOWNSHIP  
LORAIN COUNTY, OHIO  
JAN, 1958 - SCALE 1"=60'

BY  
**RAY E. HOLLIS**  
REGISTERED SURVEYOR

02-03-001-C  
02-03-001-??-???

2-3-1  
DEP261

02-03-001