

21154

E. 30<sup>TH</sup> ST. 50'

EAST 30<sup>TH</sup> ST. 50'

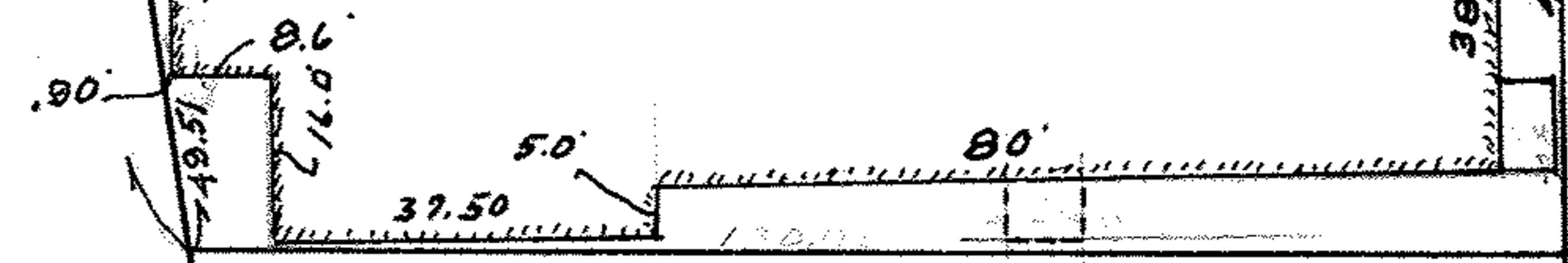
M. Fd. 30.00'  
30.27'

M. Fd.

LORAIN CITY VOL 116 PG 240

137.11  
137.65  
126.25

LORAIN YOUTH CENTER.



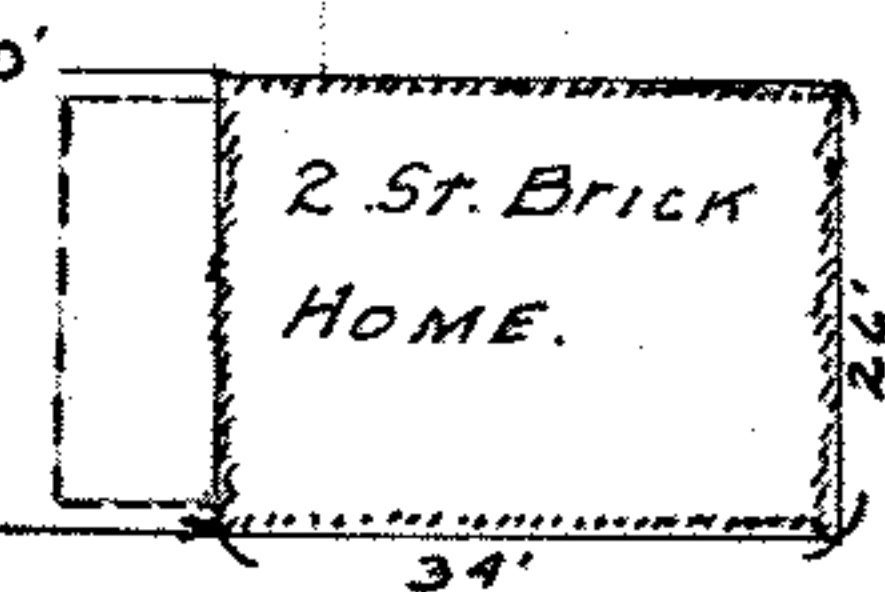
LORAIN YOUTH CENTER

49.51  
48.92

124.25



20' Brick Garage



2 ST. BRICK HOME.

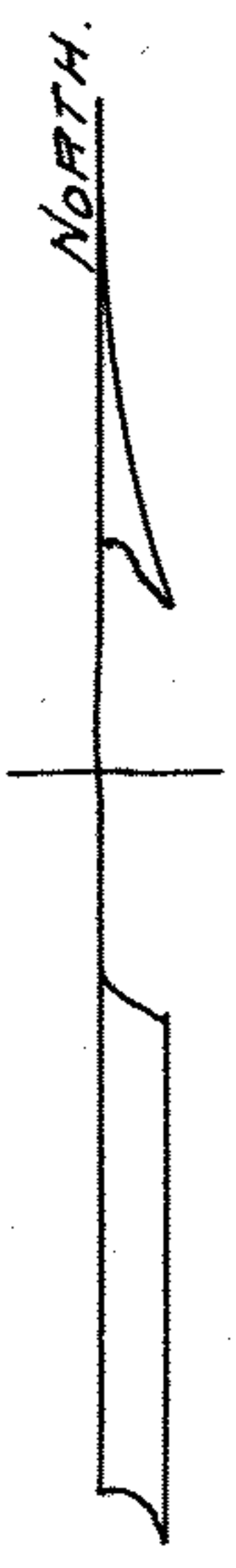
173.83  
49.51  
25.8

117.55

49.51

48.92

110.85



60'

ELYRIA AVE.

WEST LINE W.L. STECK'S 10<sup>TH</sup> AVE ALLOT  
VOL. 6. PG. 17.

SURVEY FOR  
LORAIN YOUTH CENTER  
CORNER E. 30 ST. & ELYRIA AVE  
LORAIN, OHIO.  
SCALE 1"=30' APRIL, 20, 1962.  
BY RAY E. HOLLIS, CIVIL ENG. & SURVEYOR.