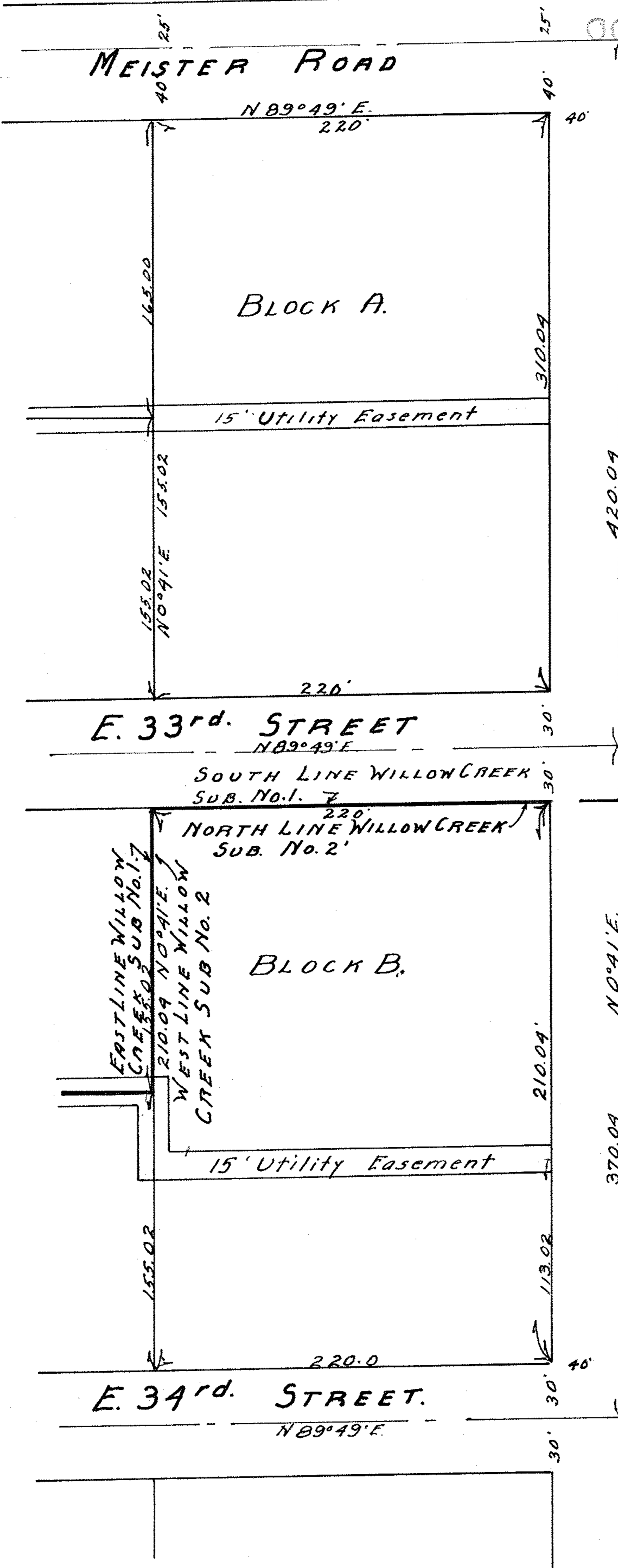


02-02-015-103-031
 07-02-015-8 105-033
 044
 045
 089
 N. 037

B 2-2-15



WILLOW CREEK SUB. No. 1 & 2
 OL. No. 15. TR. No. 2. BLACK RIVER
 TOWNSHIP LORAIN COUNTY OHIO
 BLOCK A. VOL. 14 PG. 41. WILLOW CREEK No. 1.
 BLOCK B. VOL. 15. PG. 5 WILLOW CREEK No. 2
 MAY 31. 1952 SCALE 1" = 20'
 By RAY E. HOLLIS REG. ENG.

B 2-2-15 (10)
 D-2-P-90