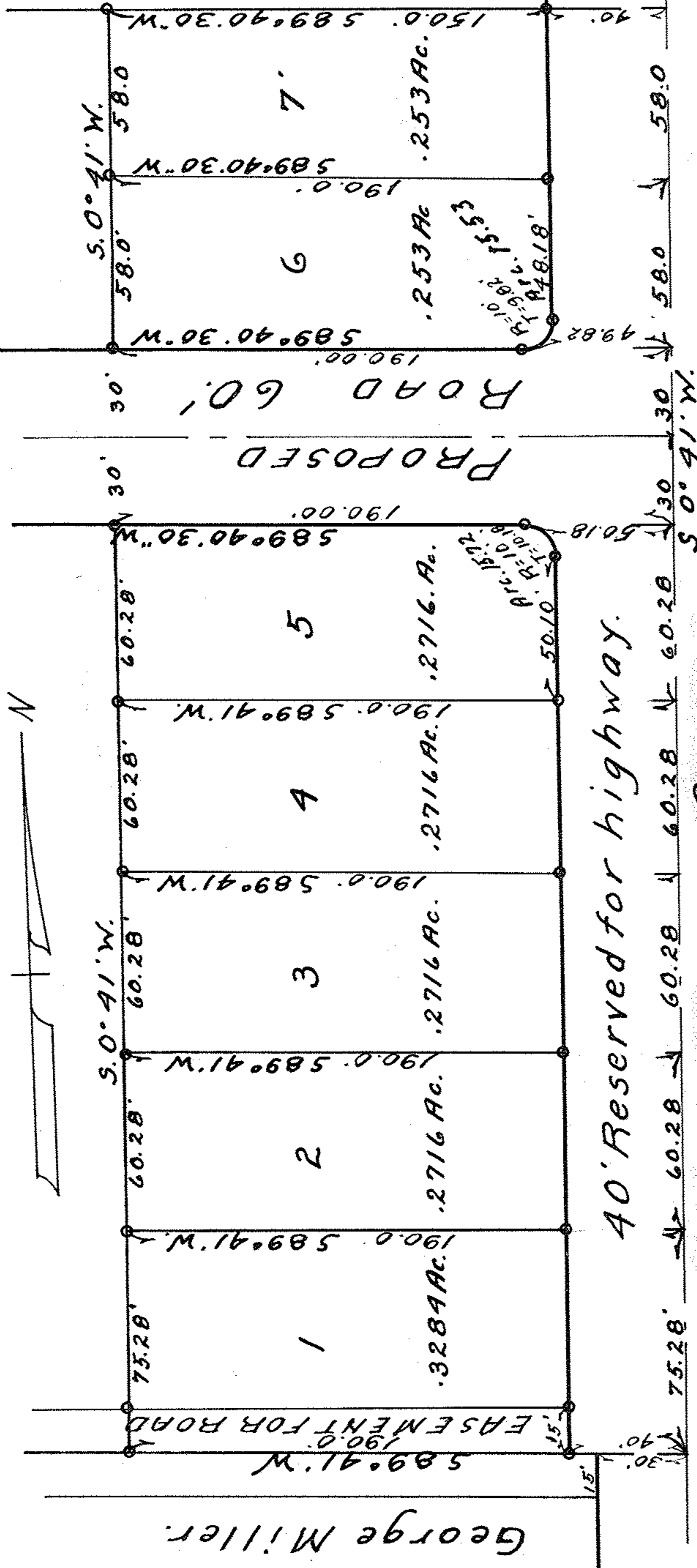


WILLOW CREEK SUB NO 2
VOL. 15. PG. 5.



George Miller.

SURVEY OF PART
 O.L. 15. TR. 2. BLACK RIVER.
 TOWNSHIP, LORAIN, COUNTY
 OHIO. SCALE 1"=50' AUGUST. 1951
 BY RAY E. HOLLIS REG. ENG. & SURV.

2-2-15 (A)

2-2-15