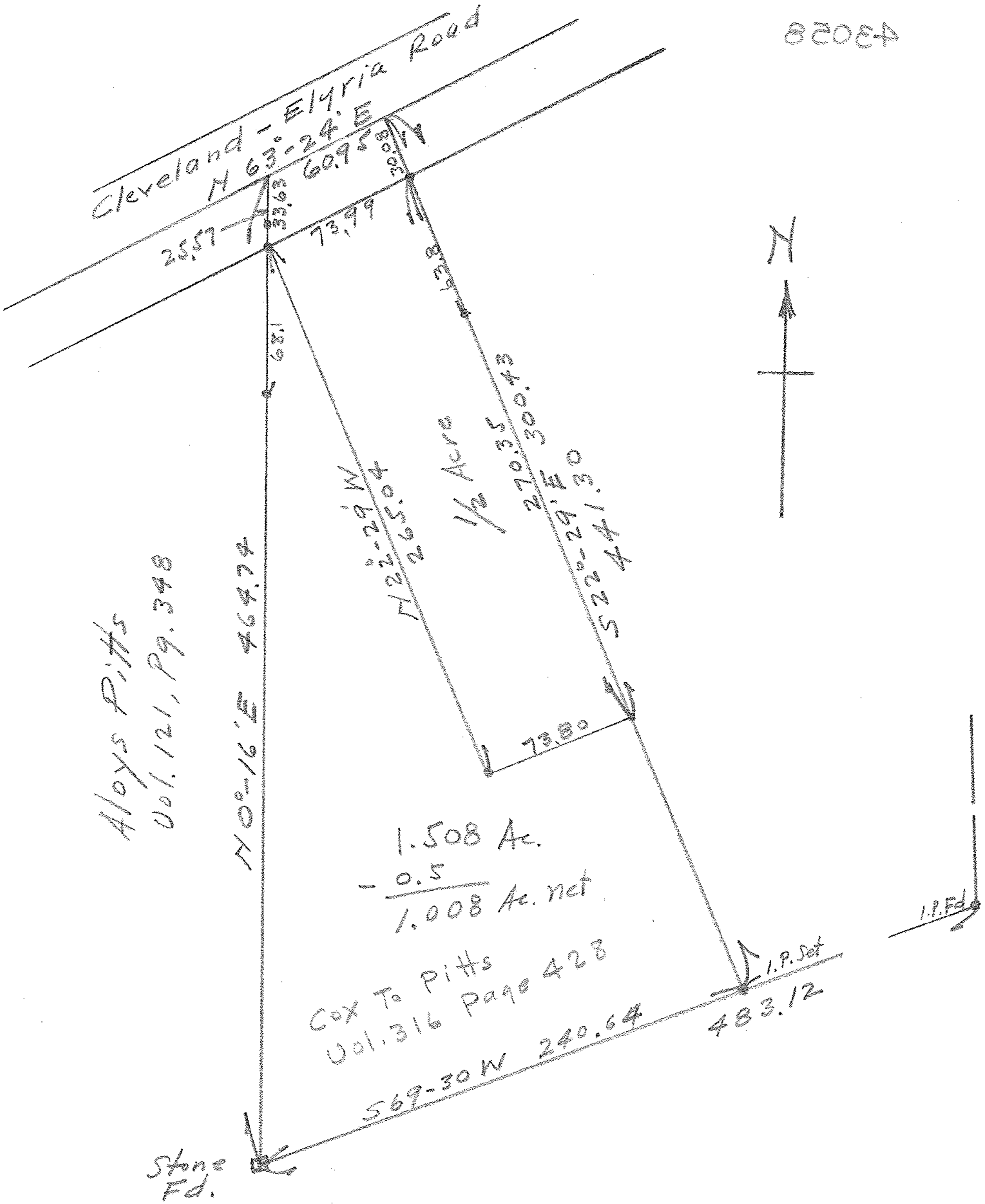


07-00-016-104-???

7-00-016-A

82084



Aloys Pitts
 Vol. 121, Pg. 348

1.508 Ac.
 - 0.5

 1.008 Ac. net

Cox To Pitts
 Vol. 316 Page 423

Map of Survey For
 J. S. Cox

O.L. No. 16 Ridgeville Twp.
 Lorain County, Ohio

Scale: 1" = 60'

Copy From Biggs Survey of Sept. 22, 1941

1/2 Acre Calculated from Same.

J. H. G.