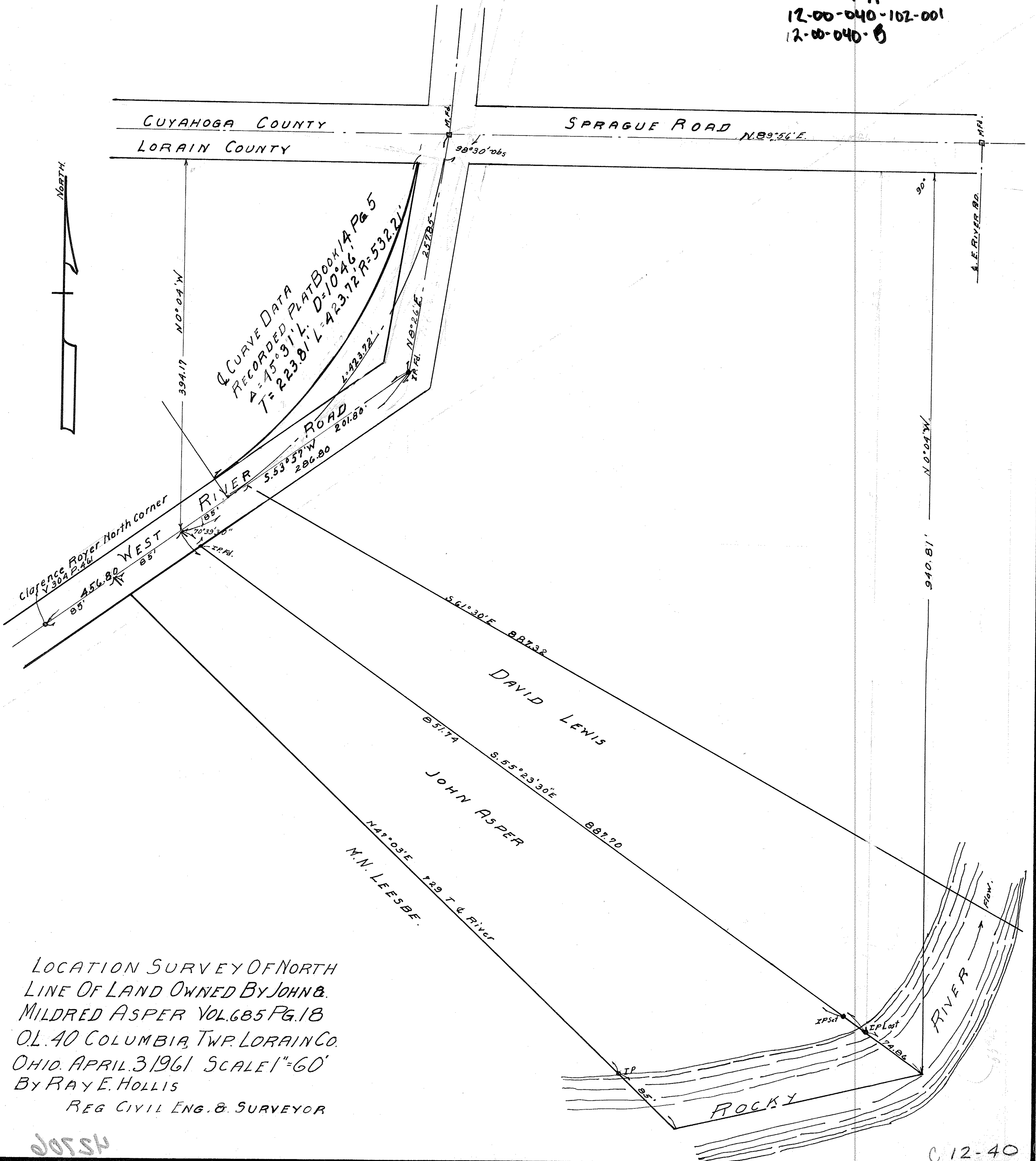


12-00-021-101-006  
 12-00-021-A  
 12-00-040-102-001  
 12-00-040-B

CUYAHOGA COUNTY  
 LORAIN COUNTY

SPRAGUE ROAD N.89°56'E.



LOCATION SURVEY OF NORTH  
 LINE OF LAND OWNED BY JOHN &  
 MILDRED ASPER VOL. 685 PG. 18  
 O.L. 40 COLUMBIA TWP. LORAIN CO.  
 OHIO. APRIL 3 1961 SCALE 1"=60'  
 BY RAY E. HOLLIS  
 REG. CIVIL ENG. & SURVEYOR

00554

C 12-40