

05-00-07-B
05-00-024-A
05-00-025-A

05-00-024-116-020-023
024, 025, 024
087

E87

MAP

Of parts of Lots 17, 24 and 25 Amherst Township,
Lorain Co., O., Now in the Village of Amherst.
Parts outlined in red, surveyed by Nichols
& Loofbourrows, Surveyors, Jan. 18, 1933.
Remainder of map from County Tax Map Records.

Scale 1"=100'

Craig Point Cemetery

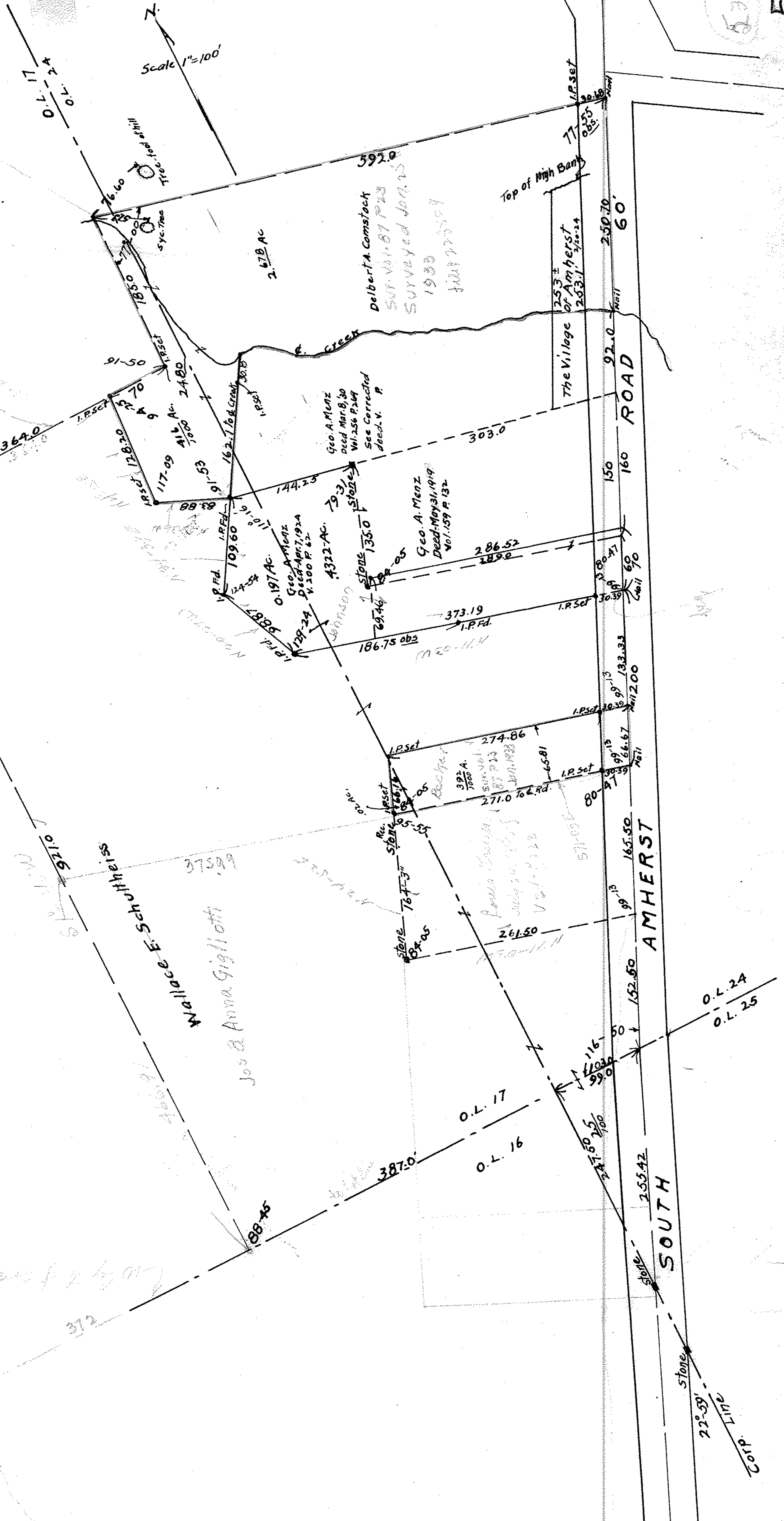
Belden

Wallace E. Schlichter

Jose Anna Gigliotti

AMHERST

SOUTH



0.17
0.16
0.24
0.25

22° 59' 11\"/>

Stone
Line
Co. P. R.