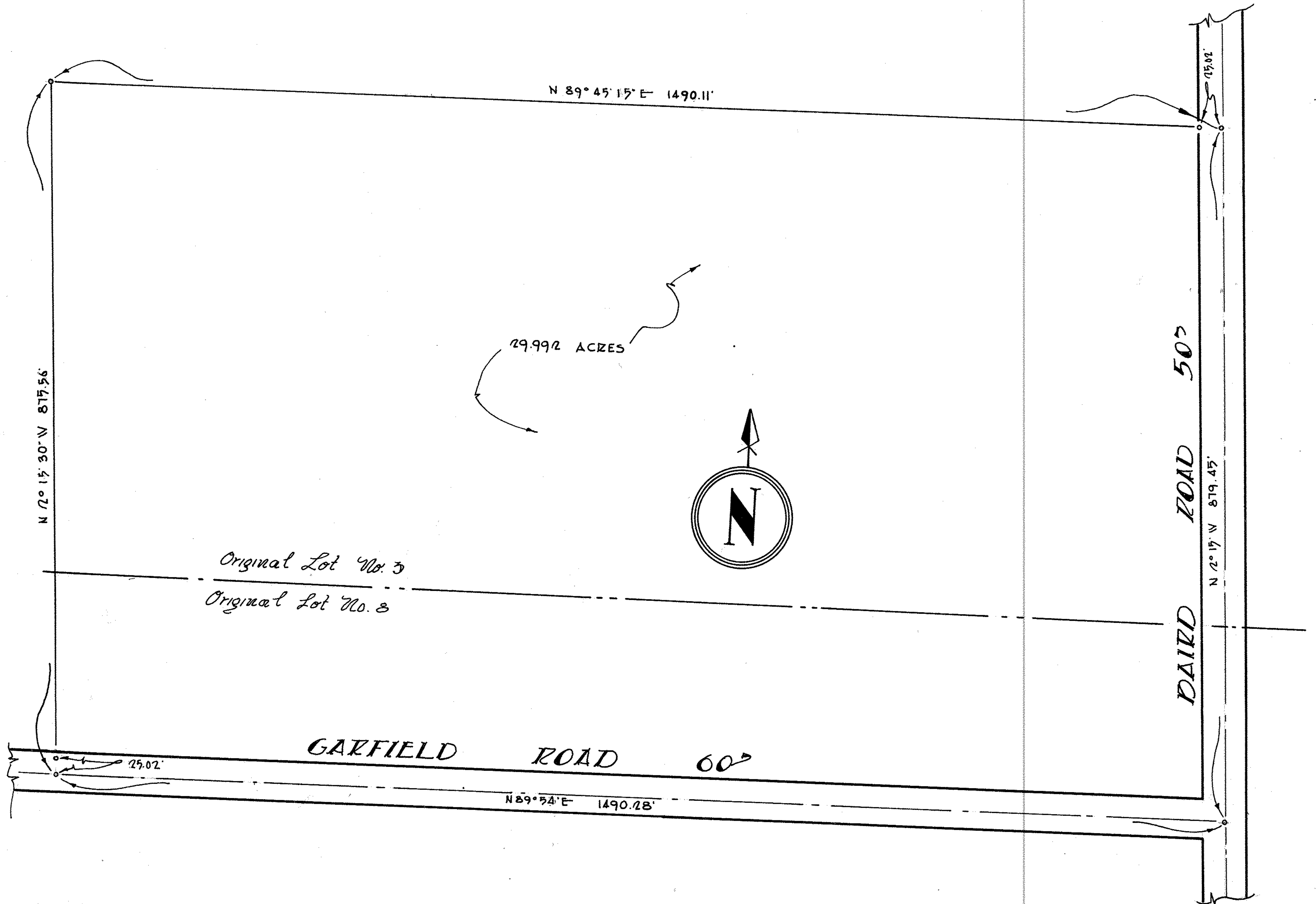


08-14-003-000-016
002
007
009
013
015
011
08-14-008-000-012
014
016
018
019
001

8-A



SURVEY OF
PART OF O.L. NO. 3 & 8
HENRIETTA TWP. LORAIN
COUNTY - OHIO - 1"=100'
BY
RAY E. HOLLIS
REG. ENG. & SURVEYOR

8-3.8

PPUSH