

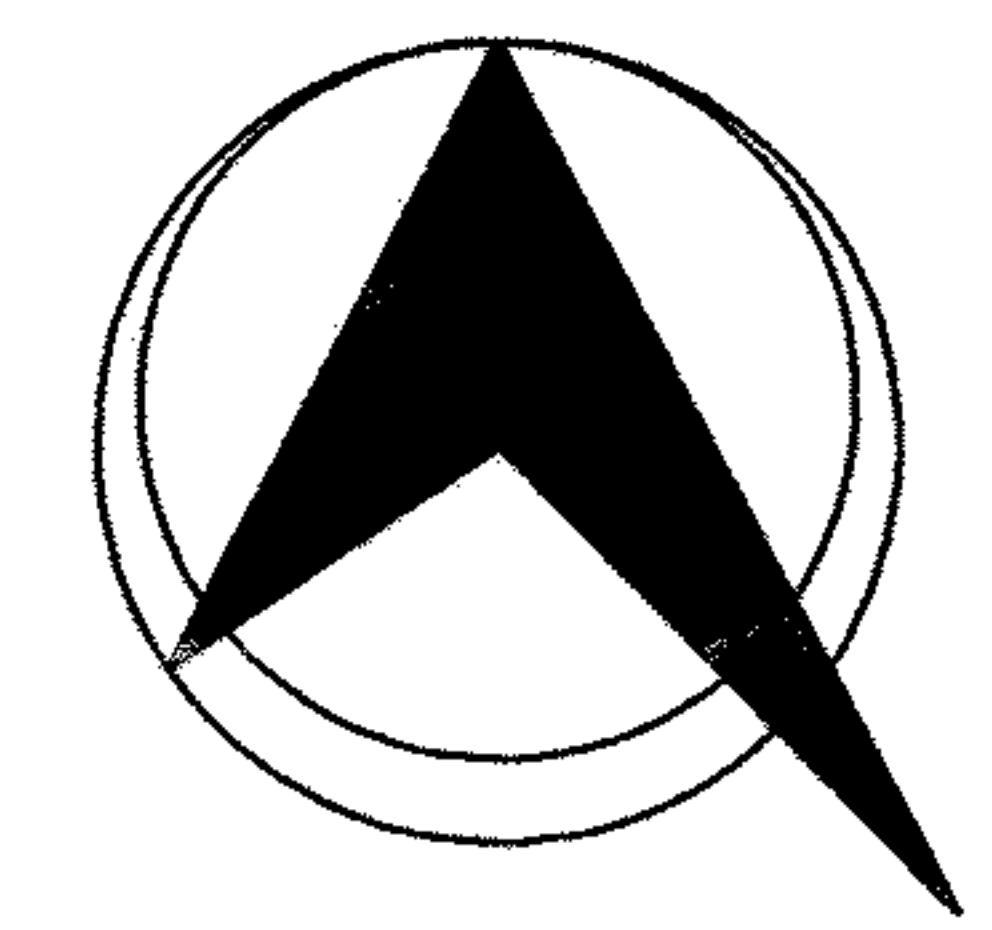
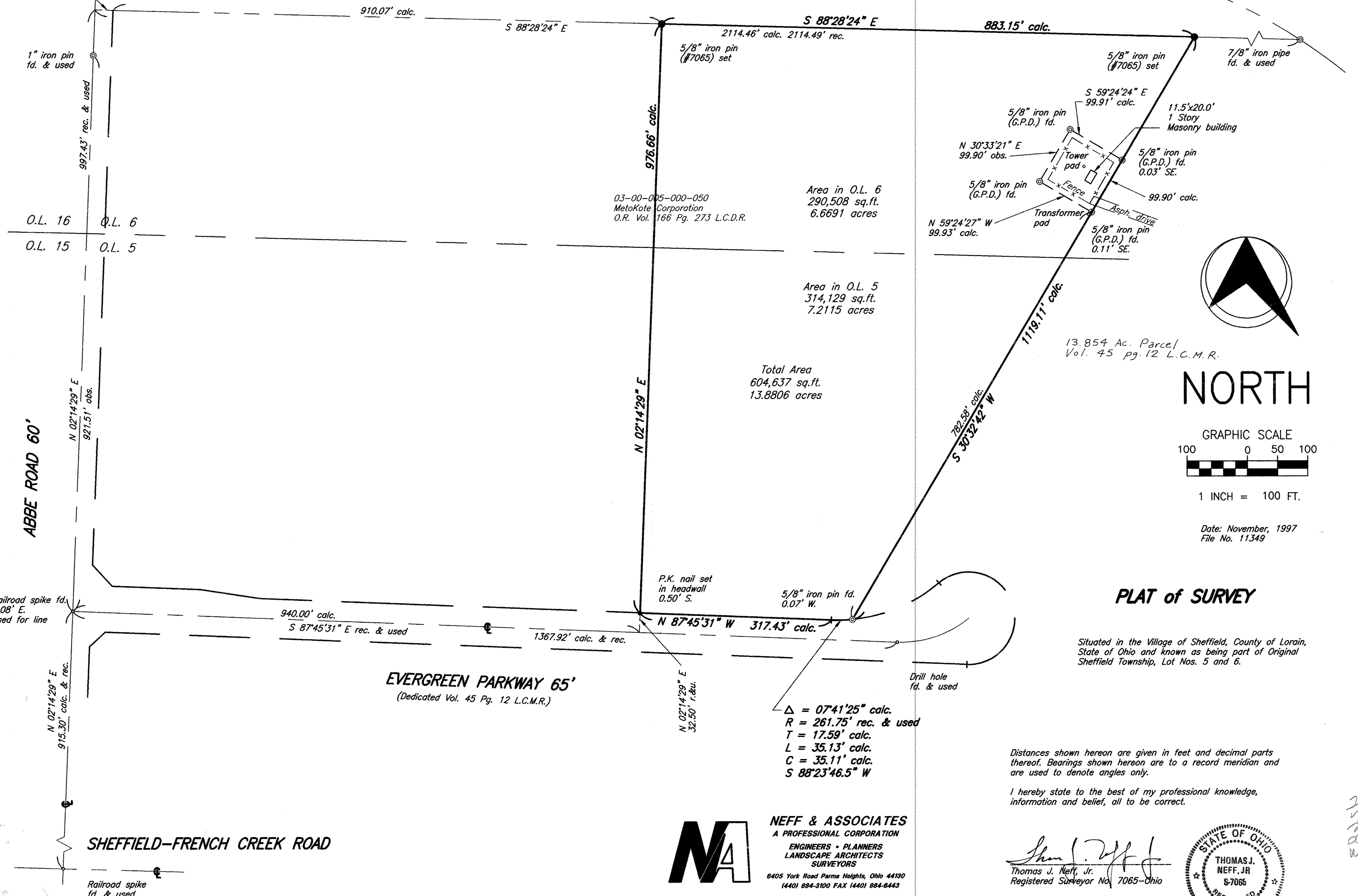
03-00-005-000-055
 03-00-006-000-214
 03-00-005-A
 03-00-006-A,B

S 88°28'24" E
 30.00' r.&u.

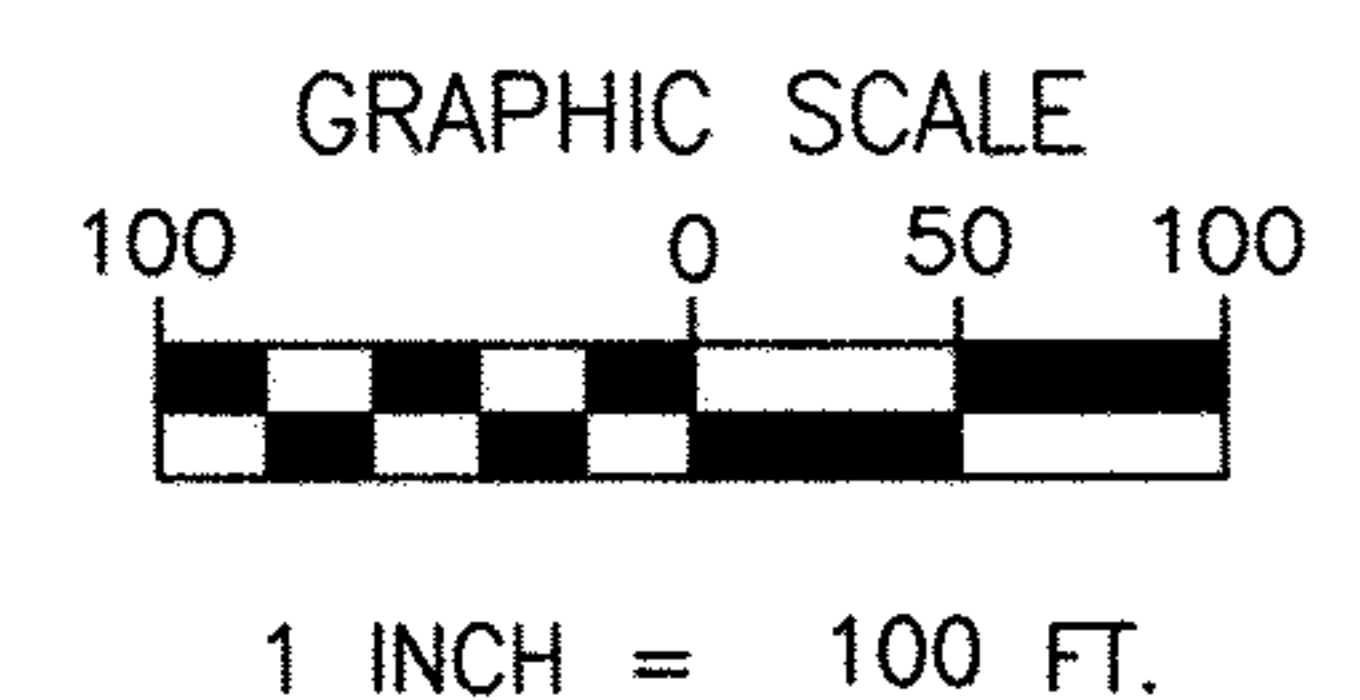
03-00-006-000-007
 Harry R. and Christa E. Gerent
 Vol. 1231 Pg. 239 L.C.D.R.

03-00-005-000-050
 MetroKote Corporation
 O.R. Vol. 166 Pg. 273 L.C.D.R.

13.854 Ac. Parcel
 Vol. 45 pg. 12 L.C.M.R.



NORTH



Date: November, 1997
 File No. 11349

PLAT of SURVEY

Situated in the Village of Sheffield, County of Lorain, State of Ohio and known as being part of Original Sheffield Township, Lot Nos. 5 and 6.

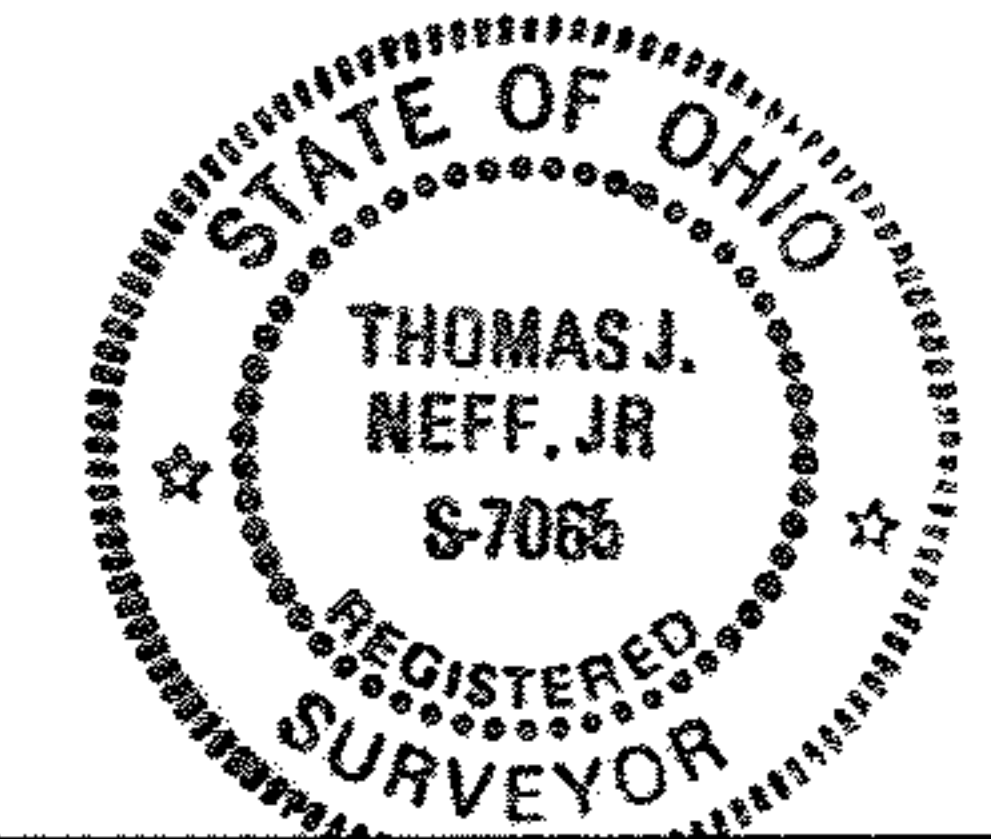
Δ = 07°41'25" calc.
 R = 261.75' rec. & used
 T = 17.59' calc.
 L = 35.13' calc.
 C = 35.11' calc.
 S 88°23'46.5" W

Distances shown hereon are given in feet and decimal parts thereof. Bearings shown hereon are to a record meridian and are used to denote angles only.

I hereby state to the best of my professional knowledge, information and belief, all to be correct.

NEFF & ASSOCIATES
 A PROFESSIONAL CORPORATION
 ENGINEERS • PLANNERS
 LANDSCAPE ARCHITECTS
 SURVEYORS
 6405 York Road Parma Heights, Ohio 44130
 (440) 884-3100 FAX (440) 884-6443

Thomas J. Neff, Jr.
 Thomas J. Neff, Jr.
 Registered Surveyor No. 7065-Ohio



45002