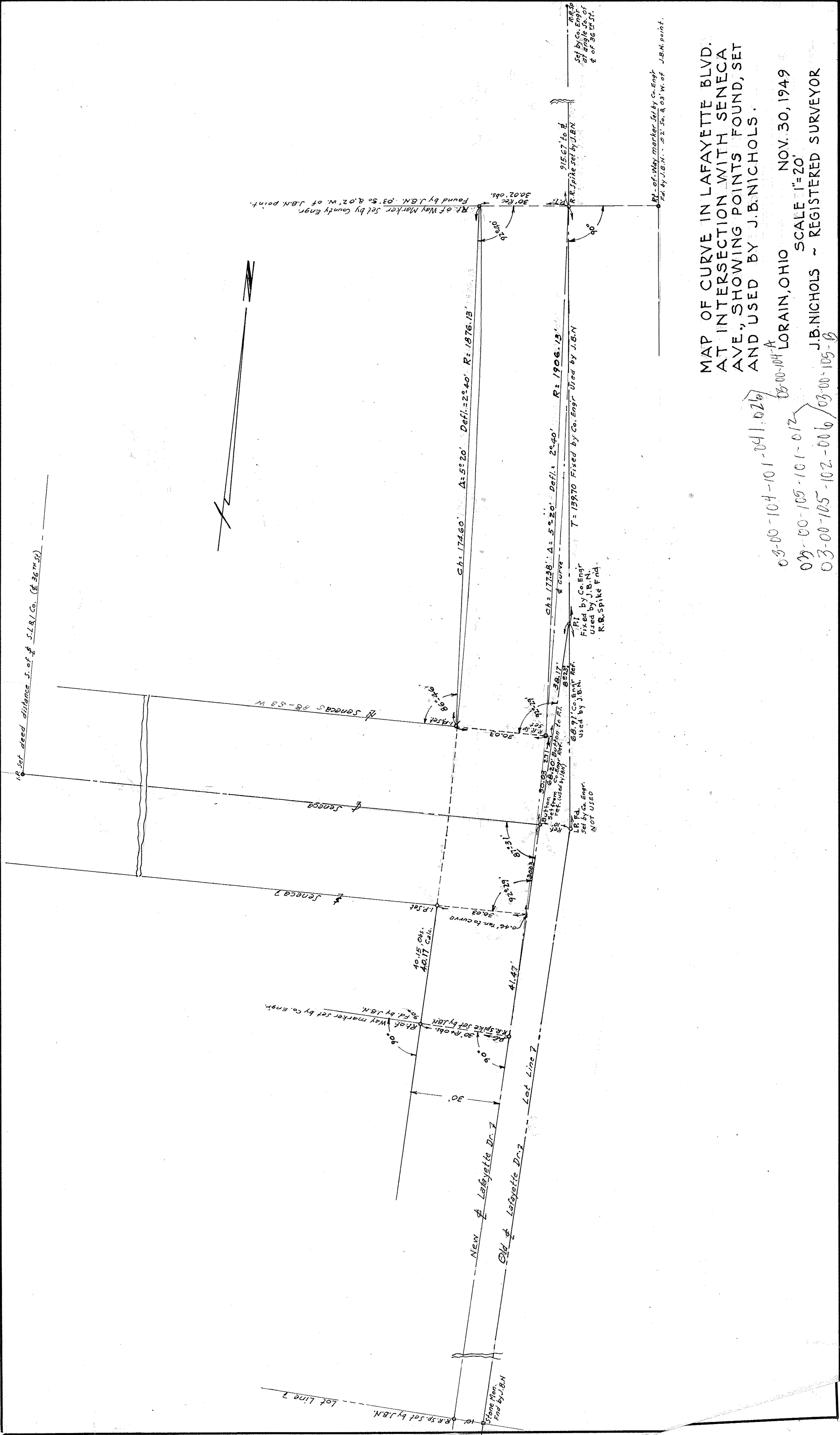


I.P. set dead distance S. of S.L.S. Co. (E. 3674.5)



MAP OF CURVE IN LAFAYETTE BLVD.
 AT INTERSECTION WITH SENECA
 AVE., SHOWING POINTS FOUND, SET
 AND USED BY J.B. NICHOLS.

NOV. 30, 1949
 SCALE 1"=20'
 J.B. NICHOLS - REGISTERED SURVEYOR
 03-00-104-101-041.026
 03-00-104-101-041.026
 03-00-105-101-012
 03-00-105-102-006 / 03-00-105-6