

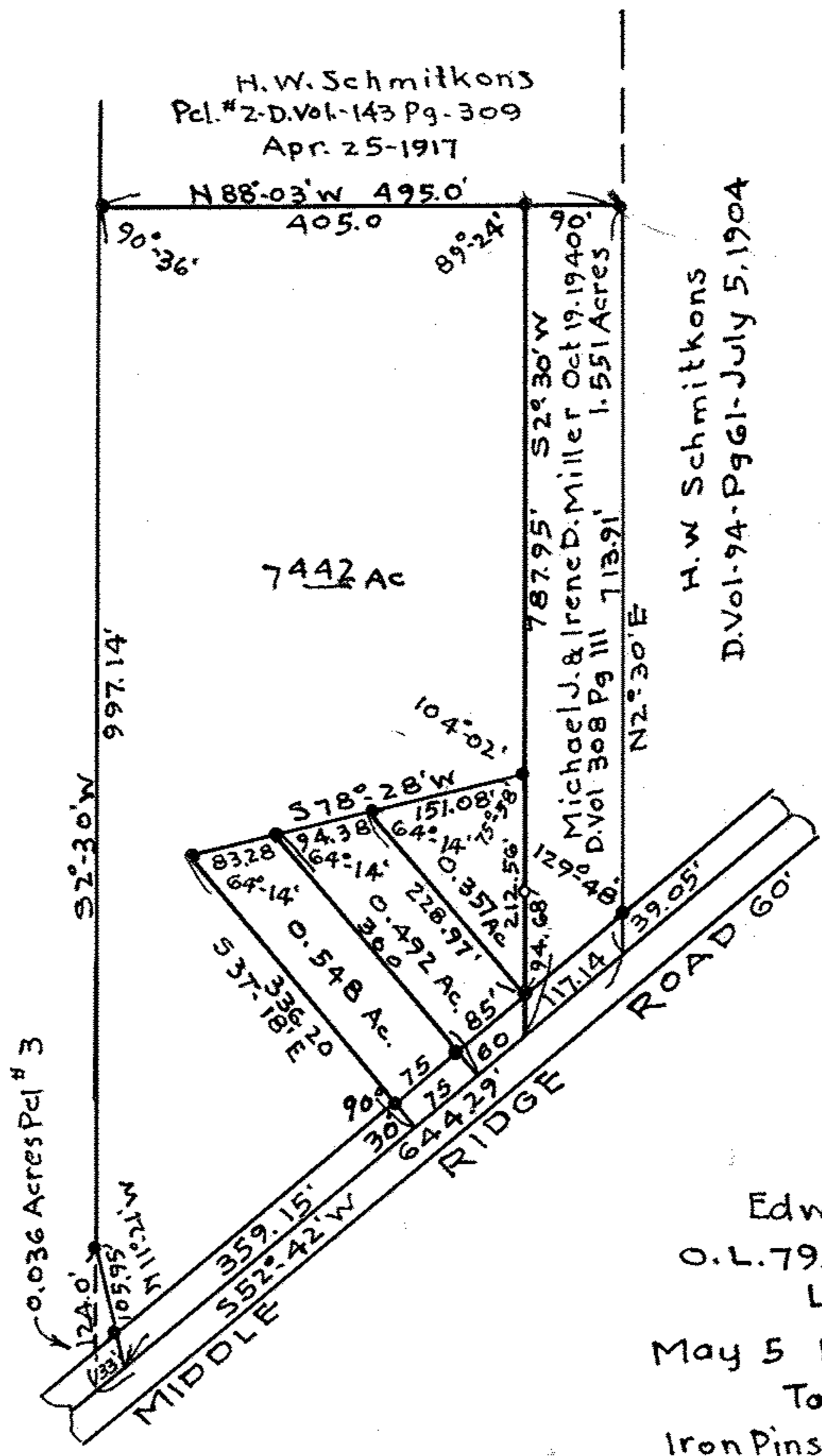
#2-L-S

05-00-079-000-069
5-00-079-B

JOHN W. WARDEN

CIVIL ENGINEER AND SURVEYOR

Bertha E. Schmitkons
Pl. #1. D. Vol. 258-Pg-41 Nov. 24, 1930.



H. W Schmitkons
D. Vol. 94-Pg 61- July 5, 1904

Survey for
Edward L. Barnes.
O.L. 79. Amherst Twp.,
Lorain Co., O.
May 5 1941. Scale 1" = 200'
Total = 10.390 Acres
Iron Pins set shown thus •

Traced from map of survey made by
J.W. Warden loaned to us by Arthur
Schmitkons - 2/20-50 SRN.

S-T-24