



BEARINGS SHOWN ARE ASSUMED AND USED TO DESCRIBE ANGLES ONLY.

GEORGE SHUTE V. 1331 P. 521

N. 0° 05' 40" W. 1733.93 ±

PARCEL N° 1
5.6480 Acres

S. 0° 05' 40" E. 1731.82 ±

PARCEL N° 2
5.6918 Acres

S. 0° 05' 40" E. 1730.29 ±

13.05 Ac. ±

1.71 Ac. ±

PARCEL N° 3
5.6867 Acres

S. 0° 05' 40" E. 1728.76 ±

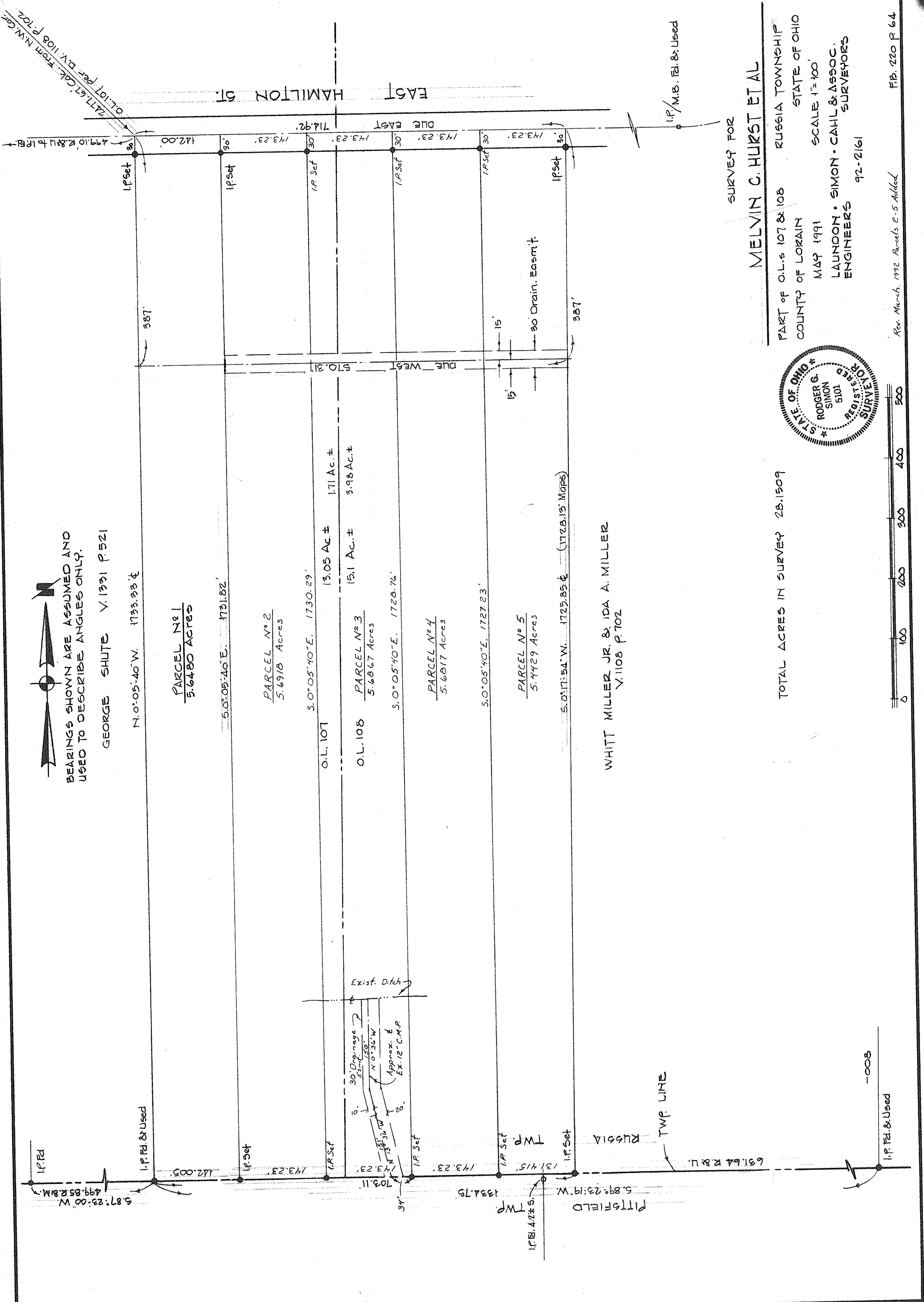
PARCEL N° 4
5.6817 Acres

S. 0° 05' 40" E. 1727.23 ±

PARCEL N° 5
5.7729 Acres

S. 0° 17' 54" W. 1725.85 ± (1728.15' Maps)

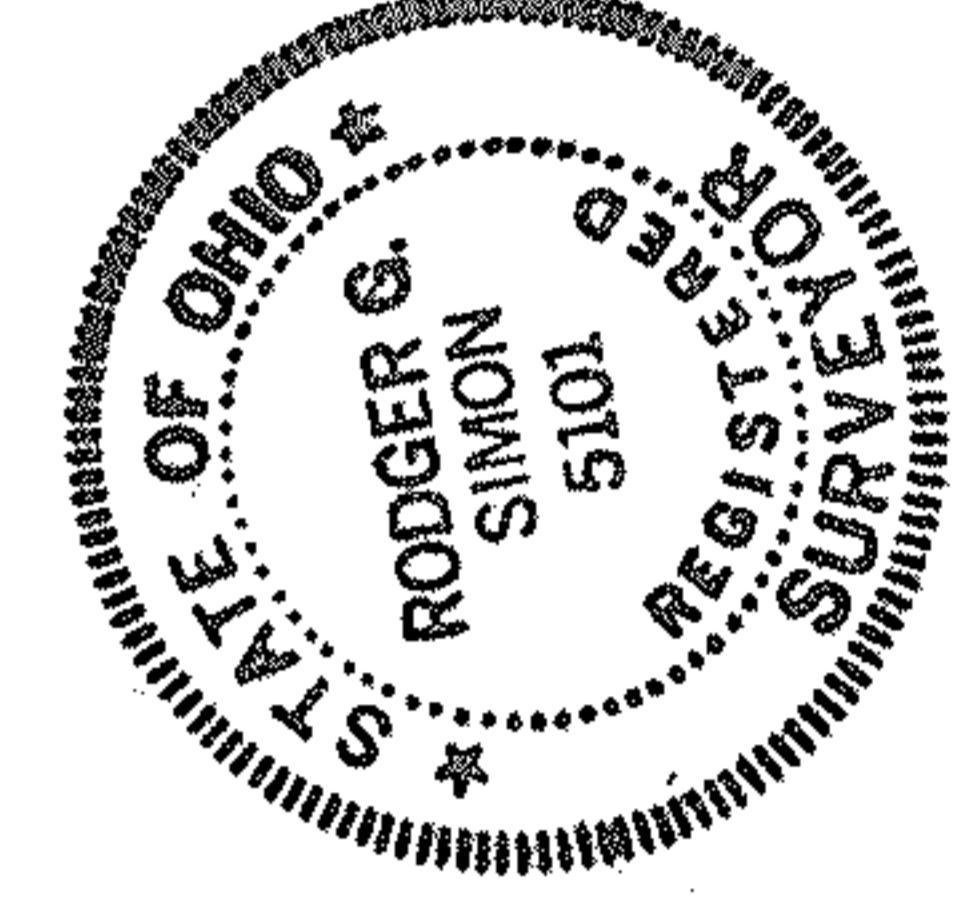
WHITT MILLER JR. & IDA A. MILLER
V. 1108 P. 702



SURVEY FOR

MELVIN C. HURST ET AL

PART OF O.L.s 107 & 108 RUSSELLIA TOWNSHIP
COUNTY OF LORAIN STATE OF OHIO
MAY 1991 SCALE 1"=100'
LAUNDON, SIMON & ASSOC.
ENGINEERS SURVEYORS
92-2161



TOTAL ACRES IN SURVEY 28.1509



Rev. March, 1992 Revisions 2-5 Added

FIG. 220 P. 64

-008

I.P. Fd. & Used

RUSSELLIA

TWP

PITTSFIELD

I.P. Fd. & Used

631.64 R & U

5.87° 23' 00" W

499.85 R & B.M.

P.D. 1

1332.75

134.15

143.23

143.23

143.23

143.23

143.23

142.00

499.10 R & U to I.P. Fd.

277.67 Ck. from N.W. Cor.

OL. 107 per O.L. 108 P. 702

387'

15'

15'

90' Drain. Easmt.

387'

I.P. M.B. Fd. & Used

570.31

DUE WEST

1728.15

DUE EAST

714.92

EAST HAMILTON ST

143.23

143.23

143.23

143.23

143.23

143.23

143.23

143.23

143.23

143.23

143.23

143.23

143.23

143.23

143.23

143.23

143.23

143.23

143.23

143.23

143.23

143.23

143.23

143.23

143.23

143.23

143.23

143.23

143.23

143.23

143.23

143.23

143.23

143.23

143.23

143.23

143.23

143.23

143.23

143.23

143.23

143.23

143.23

143.23

143.23

143.23

143.23

143.23

143.23

143.23

143.23

143.23

143.23

143.23

143.23

143.23

143.23

143.23

143.23

143.23

143.23

143.23

143.23

143.23

143.23

143.23

143.23

143.23

143.23

143.23

143.23

143.23

143.23

143.23

143.23

143.23

143.23

143.23

143.23

143.23

143.23

143.23

143.23

143.23

143.23

143.23

143.23

143.23

143.23

143.23

143.23

143.23

143.23

143.23

143.23

143.23

143.23

143.23

143.23

143.23

143.23

143.23

143.23

143.23

143.23

143.23

143.23

143.23

143.23

143.23

143.23

143.23

143.23

143.23

143.23

143.23

143.23

143.23

143.23

143.23

143.23

143.23

143.23

143.23

143.23

143.23

143.23

143.23

143.23

143.23

143.23

143.23

143.23

143.23

143.23

143.23

143.23

143.23

143.23

143.23

143.23

143.23

143.23

143.23

143.23

143.23

143.23

143.23

143.23

143.23

143.23

143.23

143.23

143.23

143.23

143.23

143.23

143.23

143.23

143.23

143.23

143.23

143.23

143.23

143.23

143.23

143.23

143.23

143.23

143.23

143.23

143.23

143.23

143.23

143.23

143.23

143.23

143.23

143.23

143.23

143.23

143.23

143.23

143.23

143.23

143.23

143.23

143.23

143.23

143.23

143.23

143.23

143.23

143.23

143.23

143.23

143.23

143.23

143.23

143.23

143.23

143.23

143.23

143.23

143.23

143.23

143.23

143.23

143.23

143.23

143.23

143.23

143.23

143.23

143.23

143.23

143.23

143.23

143.23

143.23

143.23

143.23

143.23