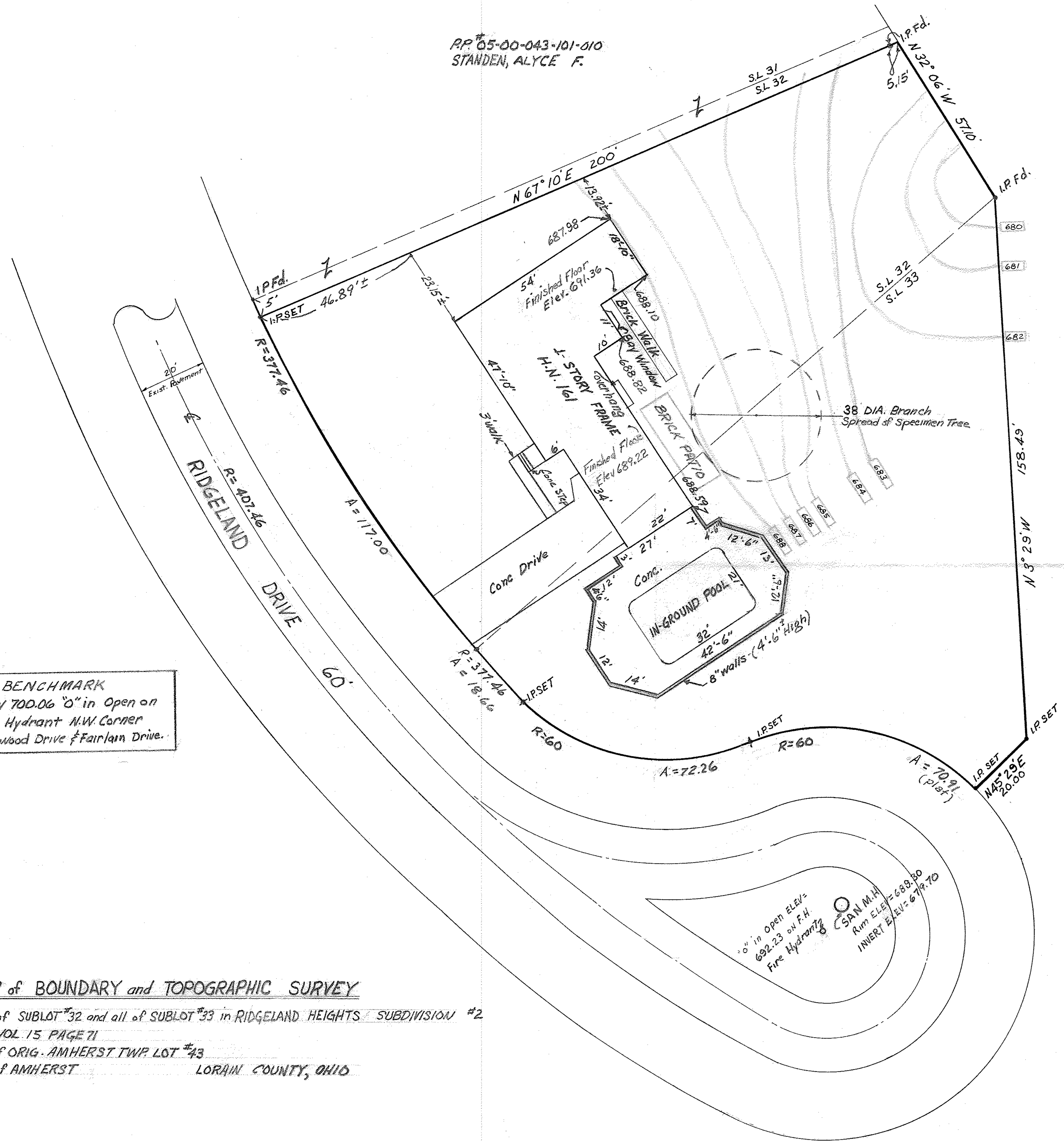
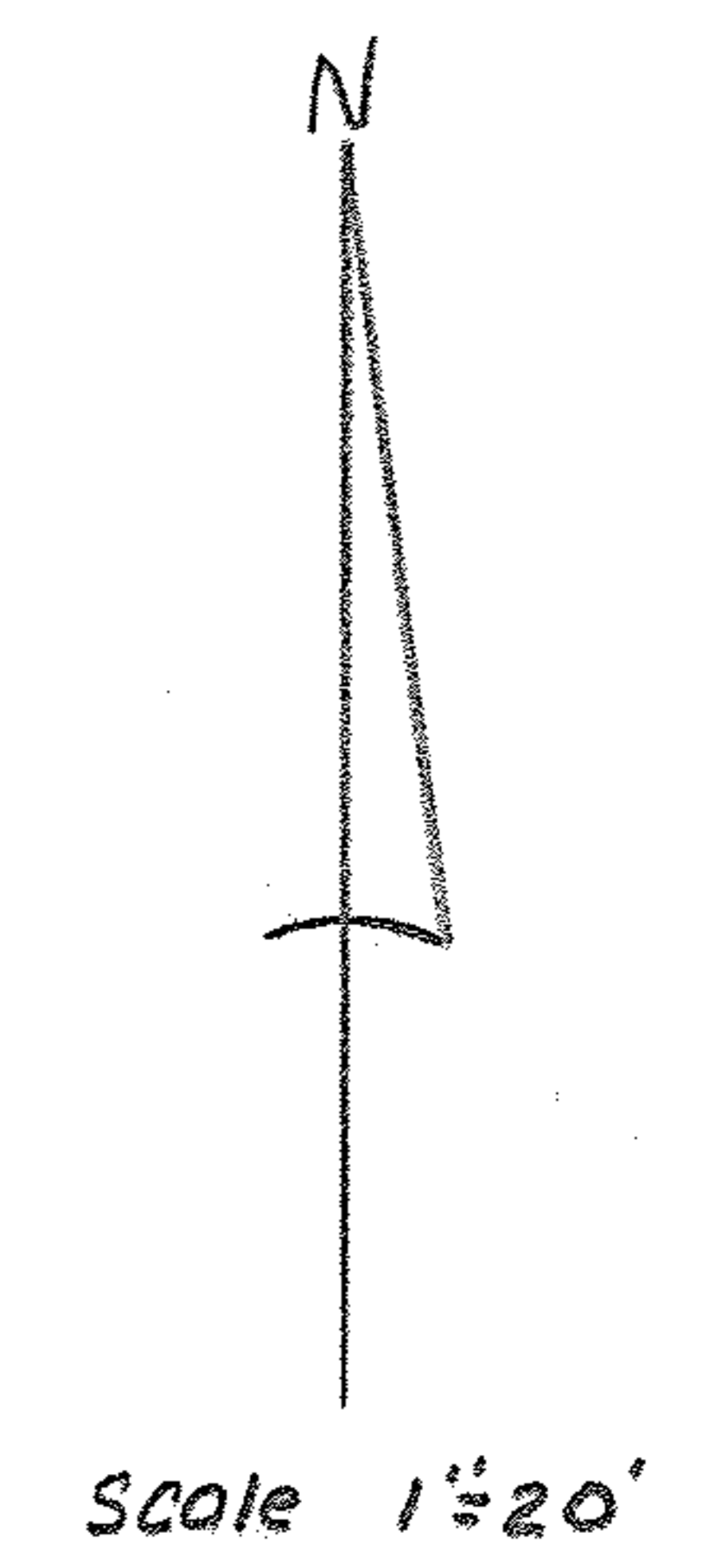


RP #05-00-043-101-010  
STANDEN, ALYCE F.

RP #05-00-043-101-013  
CITY OF AMHERST



**BENCHMARK**  
Elev 700.06 "0" in Open on  
Fire Hydrant N.W. Corner  
Edgewood Drive & Fairlam Drive.

AREA of S.L. #32 is 0.386 AC. (14592.6 #)  
" of S.L. #33 is 0.335 AC. (16814.16 #)  
TOTAL 0.721 AC. (31406.76 #)

MAP of BOUNDARY and TOPOGRAPHIC SURVEY

Part of SUBLOT #32 and all of SUBLOT #33 in RIDGELAND HEIGHTS SUBDIVISION #2  
PLAT VOL 15 PAGE 71  
Part of ORIG. AMHERST TWP LOT #43  
CITY of AMHERST LORAIN COUNTY, OHIO

05-00-043-101-011  
05-00-043-A

**McGLINCHY and ASSOCIATES**  
PROFESSIONAL ENGINEERS and SURVEYORS  
ELYRIA OHIO  
FEBRUARY, 1979 #794808