

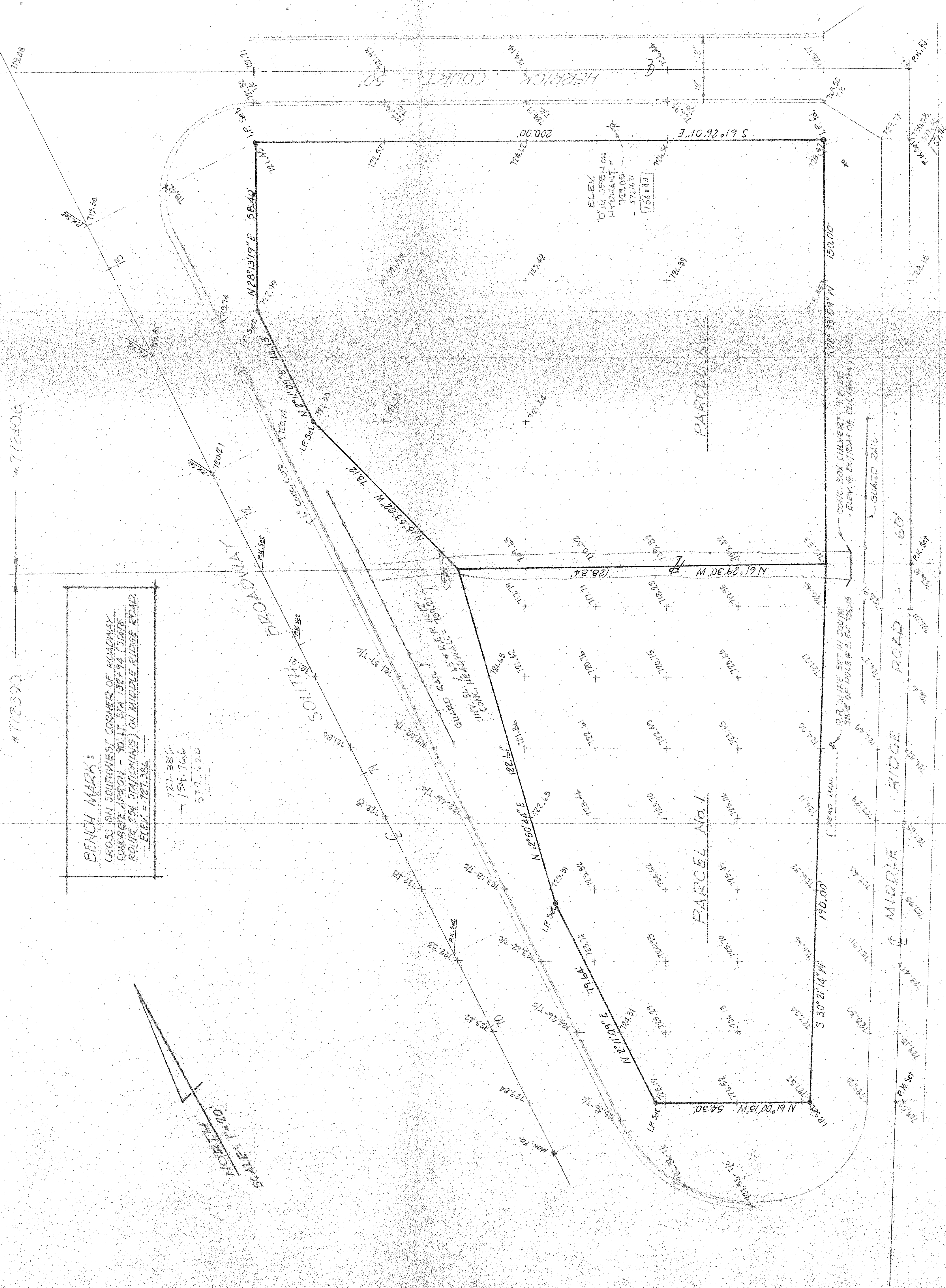
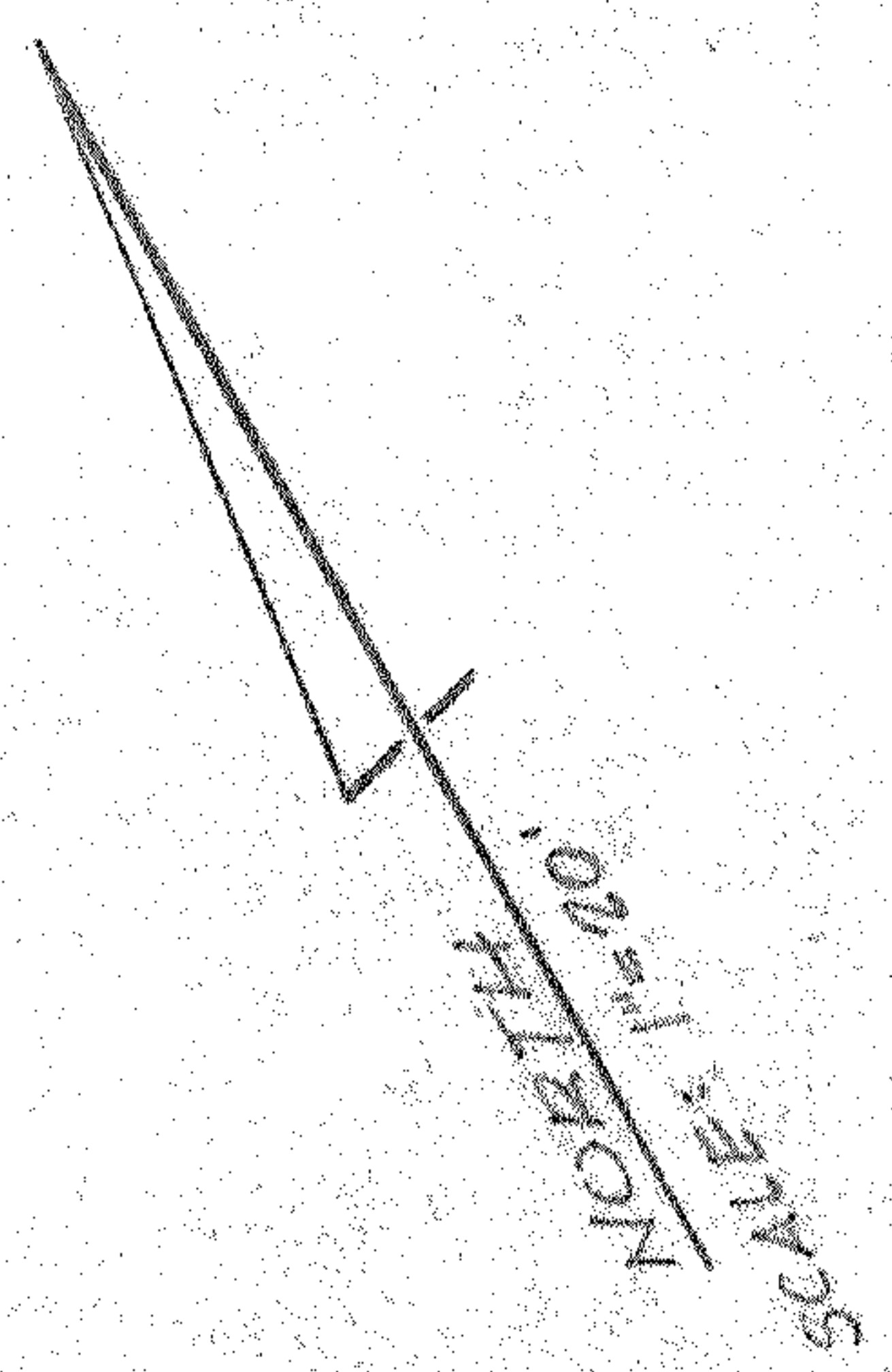
772390

772406

BENCH MARK:

CROSS ON SOUTHWEST CORNER OF ROADWAY
CONCRETE APRON - 90 FT. STA. 192+74 (STATE
ROUTE 254 STATIONING) ON MIDDLE RIDGE ROAD.
ELEV. = 727.386

727.386
- 154.765
572.621



MAP OF SURVEY

for
JACK CLARK
PART of OIL, NEWBERRY TRACT ENCOMPASSING PART of SUBLOT No. 20
of the HERRICK ALLOTMENT, PLAT VOL. 15, PG. 5
CITY of LORAIN, LORAIN COUNTY, OHIO

06-21-001-01-058 6-001
McGLINCHY and ASSOCIATES
SURVEYING ENGINEERS AND SURVEYORS
ELYRIA, OHIO
AUGUST 24, 1977 102* 772390 772406