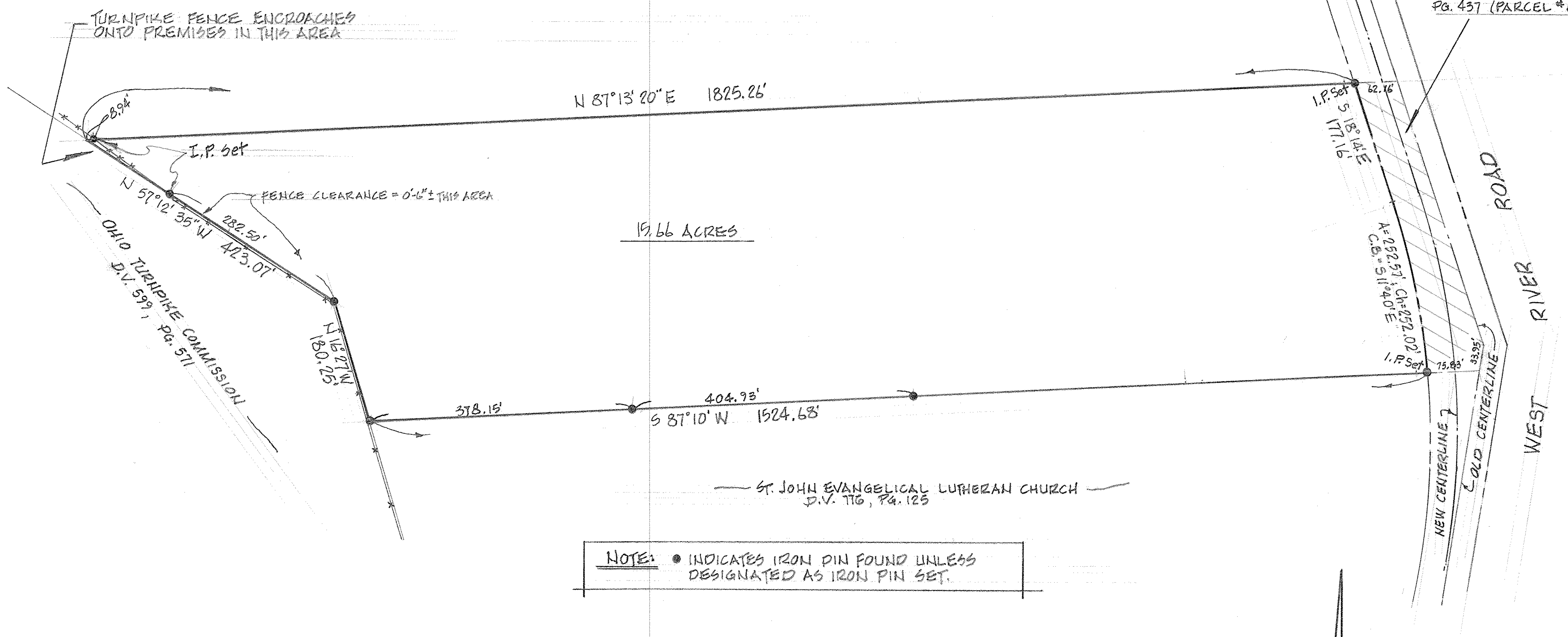


06-24-029-101-066
 077
 079
 081
 087
 083

"CROSS-HATCH" AREA
 DEEDED TO CITY OF
 ELYRIA - D.V. 1282,
 PG. 437 (PARCEL #80 WD)



MAP of BOUNDARY SURVEY
 PREPARED FOR WORTH FAUVER
 PART of ORIGINAL ELYRIA TWP LOT 29, WEST of BLACK RIVER
 CITY of ELYRIA, LORAIN COUNTY, OHIO

McGLINCHY and ASSOCIATES INC.
 PROFESSIONAL ENGINEER and SURVEYORS
 110 1/2 MIDDLE AVE ELYRIA, OHIO
 AUGUST, 1984 # 848486