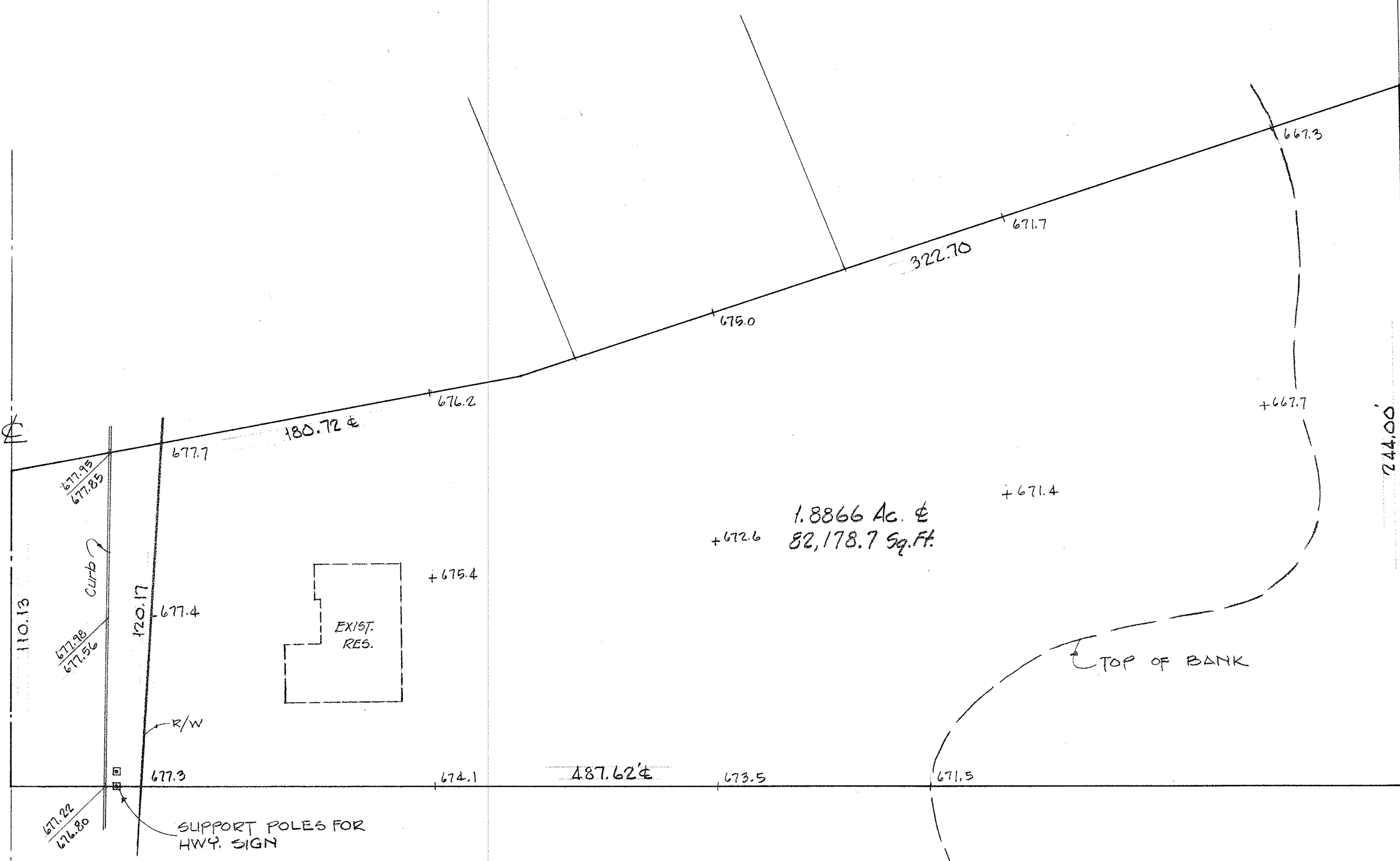


ABBE ROAD



- EXIST. POND ON PROPERTY IS MAN-MADE
- ACCORDING TO WETLAND INVENTORY MAPS USED BY U.S. CORPS. OF ARMY ENGINEERS THE PROPERTY SHOWN IS NOT CONSIDERED TO BE IN A WETLAND AREA.

PRELIMINARY TOPOGRAPHY

PIZZA HUT

VILLAGE OF SHEFFIELD, LORAIN COUNTY OHIO

SCALE 1"=30' JANUARY 1991

LAUNDON • SIMON • CAHL & ASSOC.
ENGINEERS SURVEYORS
106 MIDDLE AVE. ELYRIA, O. 44035 (216) 322-7625

3-00-001-A
03-00-001-000-074

90-1998
FB.220 P. 2-3

247