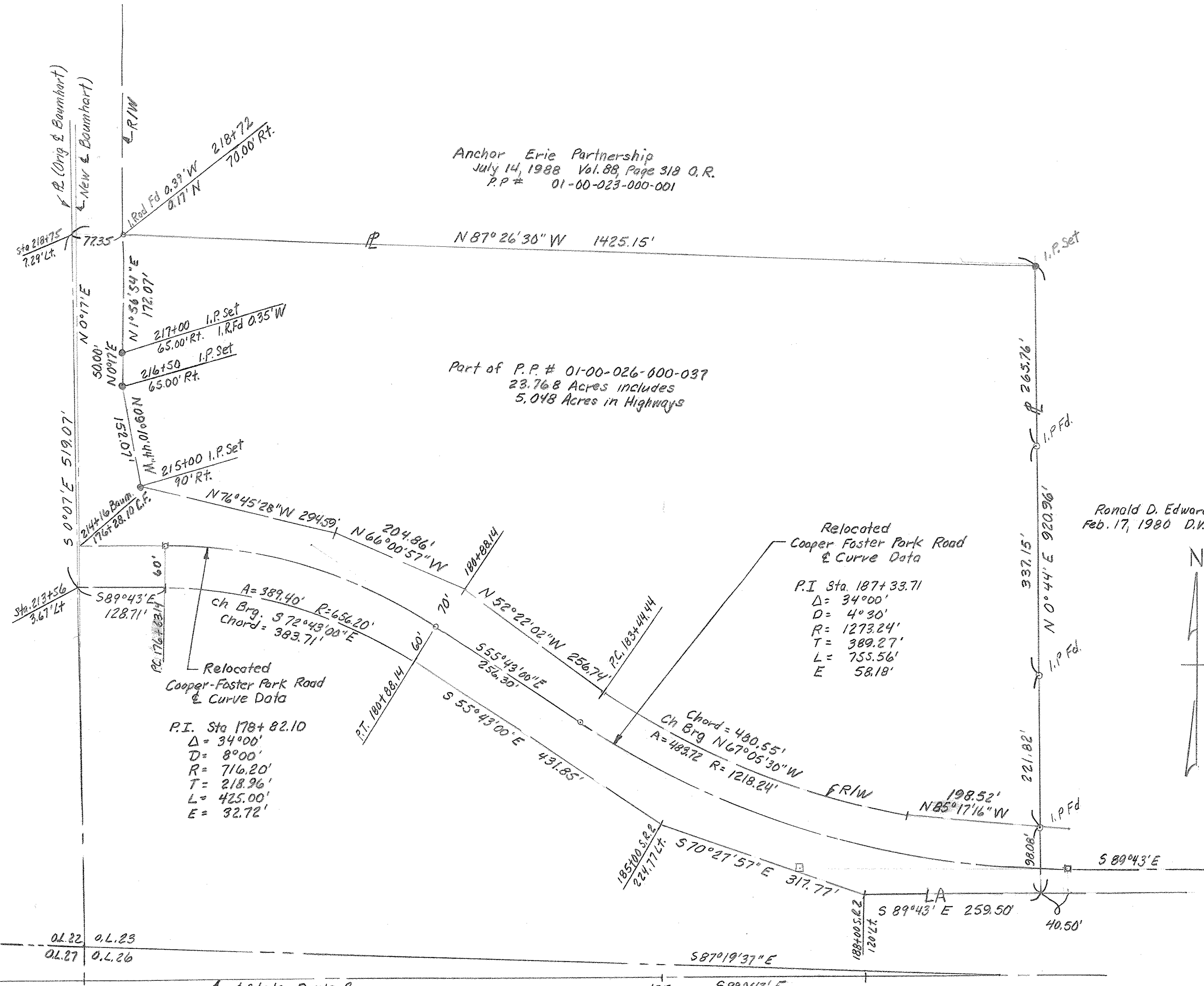


Anchor Erie Partnership  
 July 14, 1988 Vol. 88, Page 318 O.R.  
 P.P.# 01-00-023-000-001

Part of P.P.# 01-00-026-000-037  
 23.768 Acres includes  
 5.048 Acres in Highways

Ronald D. Edwards et al  
 Feb. 17, 1980 D.V. 1254, Page 852



PLAT OF SURVEY FOR  
 RUTH A. HITE

ORIGINAL LOT 23 BROWNHELM TWP  
 LORAIN COUNTY OHIO

Scale 1"=100' January 17, 1989  
 McGlinchy & Associates Amherst, Ohio  
 Job # 898772

1-00-023-A  
 01-00-023-000-040, -01B

See Plat Volume 24, Page 2 for Control (S.R.2, Baumhart, Relocated Cooper Foster Park Road)

01.22 0.L.23  
 01.27 0.L.26