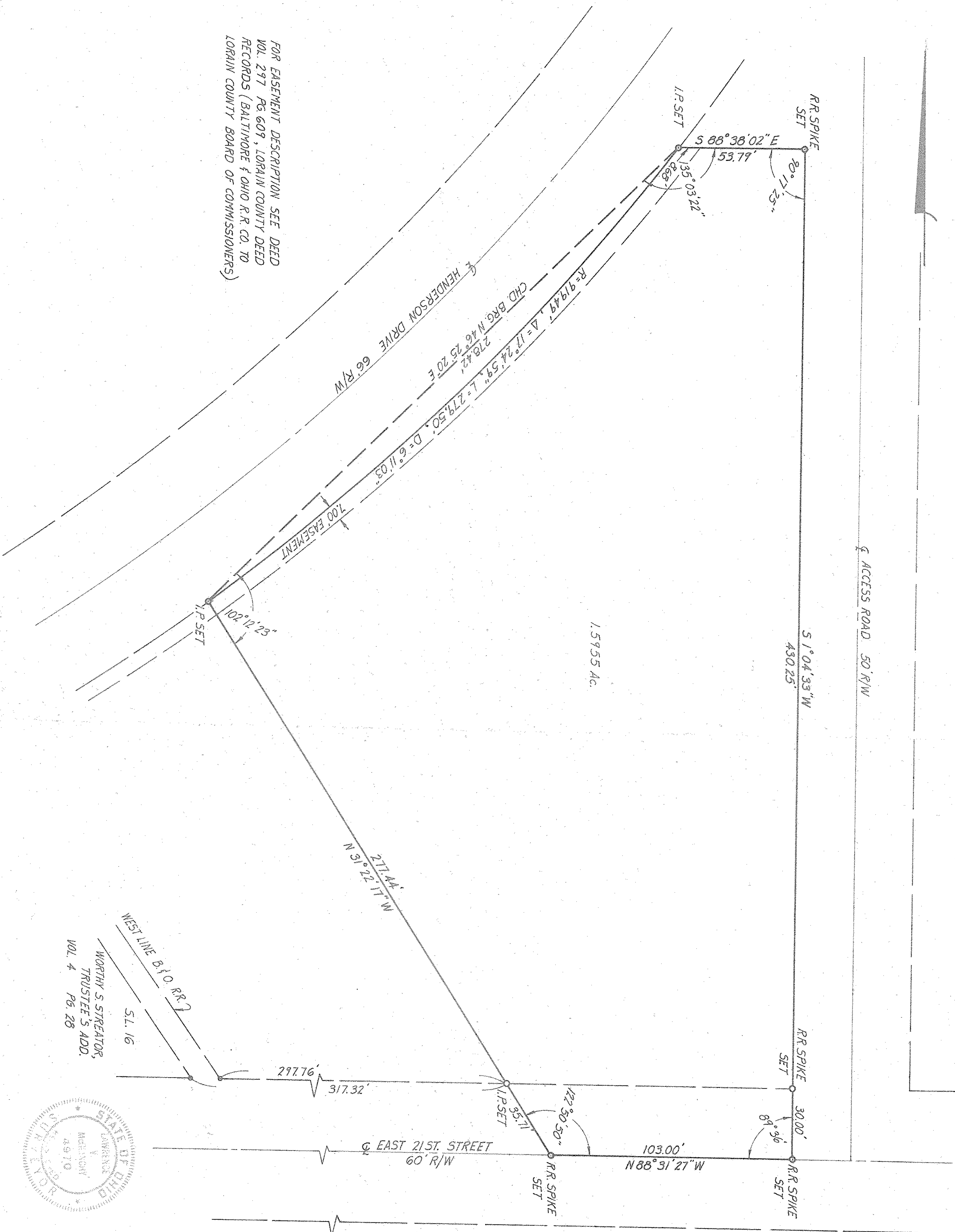
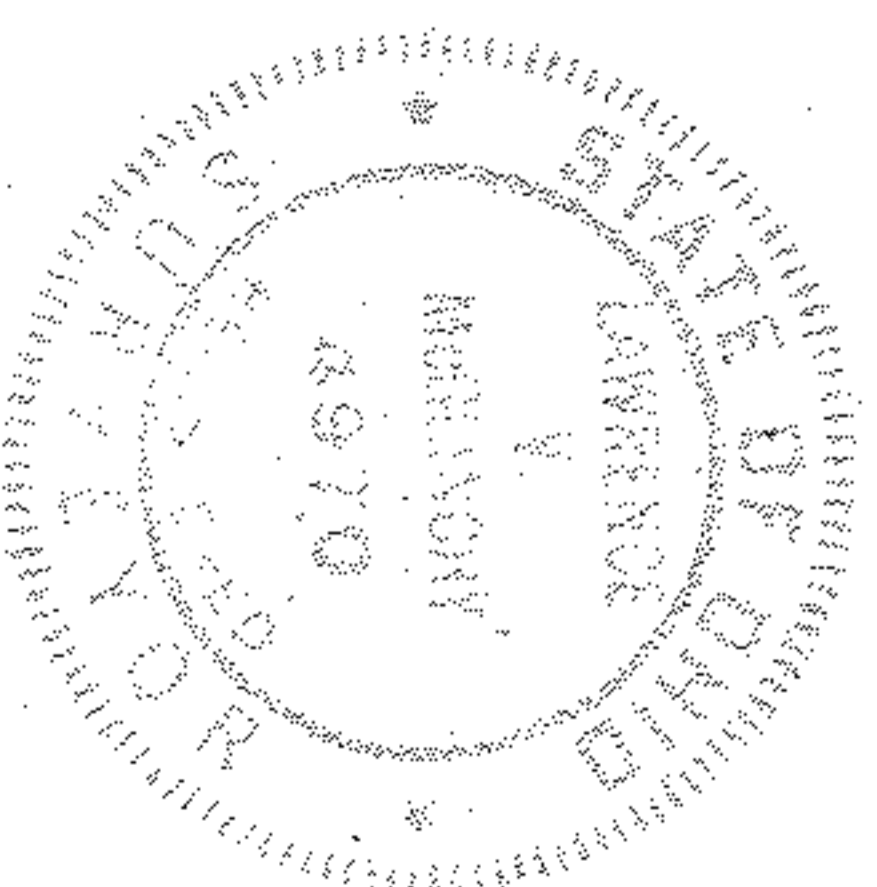


FOR EASEMENT DESCRIPTION SEE DEED  
VOL. 297 PG. 609, LORAIN COUNTY DEED  
RECORDS (BALTIMORE & OHIO R.R. CO. TO  
LORAIN COUNTY BOARD OF COMMISSIONERS)



1.5955 AC.



WEST LINE B.Y.O. RR.  
S.L. 16  
WORTHY S. STREATOR,  
TRUSTEE S. ADD.  
VOL. 4  
PG. 28

SCALE 1" = 30'  
DATE JUNE 1973  
JOB NO. 443

**NEFF & ASSOCIATES**  
PROFESSIONAL ENGINEERS  
CIVIL  
ELYRIA, OHIO

DRAWN: KFC  
CHECKED:  
APPROVED:  
E.L. & P.C.

MAP OF SURVEY PREPARED FOR  
**OHIO EDISON COMPANY - AKRON**

2-00-093-B  
02-00-093-103-011