

18-00-021-106-040
18-00-021-A

N. 89°54'E.
21.44'
NW Corner 1/2 34
21.20'
113.80'

453.28'
5, 89°54'W.
753.81'
300.53'
Northerly Line Sub-Lot 34 of G.W. Adams' Add'n. - Vol. 1 Pg. 40 Plat Records

0.3409 ACRE

N. 0°21'45"W.
128.43'
270.80'
110.00'
N. 0°23'W.
110.00'

135.00'
N. 89°54'E.

Howard B. & Hazel M. Davison
D. Vol. 672 Pg. 476
Correction Affidavit Vol. 1152 Pg. 406
4.281 ACRES REMAINING

LINCOLN ST. 49.5'

N. 0°21'45"W. as now Monumented
5.0°23'E.
160.80'
Easterly Line according to 1957 surveys

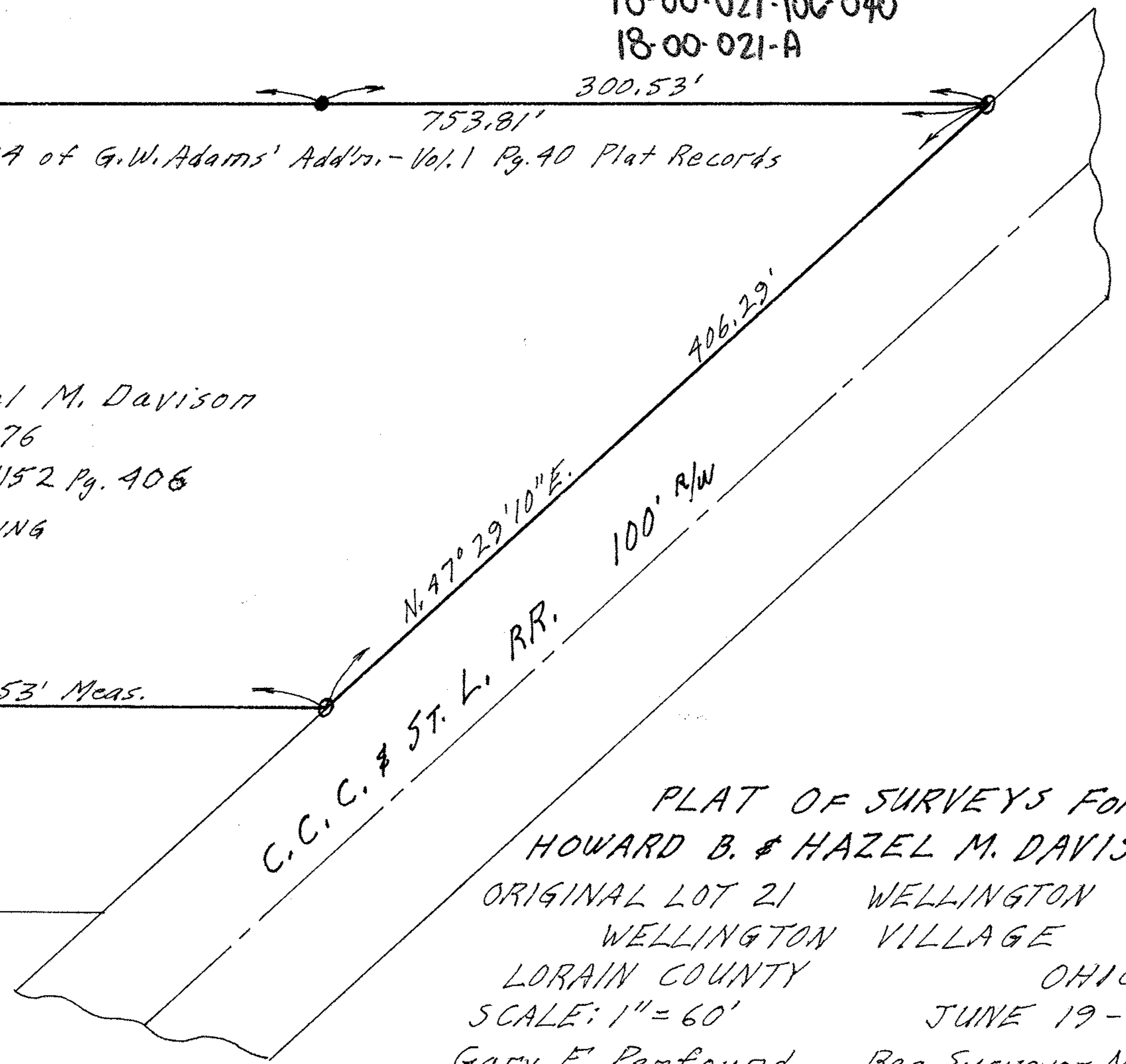
S. 89°47'E.
587.53' Meas.

Gerald & Judith Auble
D. Vol. 907 Pg. 526
Correction Affidavit Vol. 1152 Pg. 407

BARKER STREET
ADAMS ST. 33'



NOTES: ○ indicates iron pin found.
● indicates iron pin set.



PLAT OF SURVEYS FOR
HOWARD B. & HAZEL M. DAVISON
ORIGINAL LOT 21 WELLINGTON TWP.
WELLINGTON VILLAGE
LORAIN COUNTY OHIO
SCALE: 1" = 60'
JUNE 19-1978
Gary E. Penfound Reg. Surveyor No. 4457