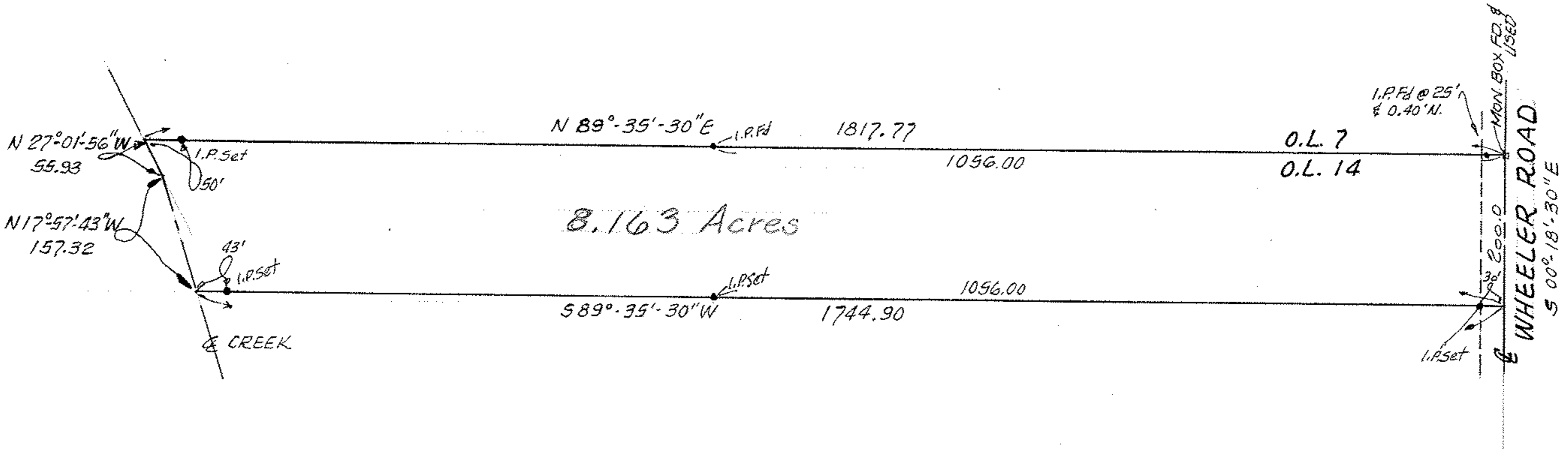


15-00-014-000-008  
15-C

1" = 200'



PART of P.P. # 15-00-014-000-001

PART of ORIG. LAGRANGE TWP. LOT 14  
LORAIN COUNTY, OHIO

THIS IS A PLAT OF SURVEY:  
FOR EDNA WHEELER

Mc GLINCHY & ASSOCIATES INC.

AUG. 31, 1982

#827351