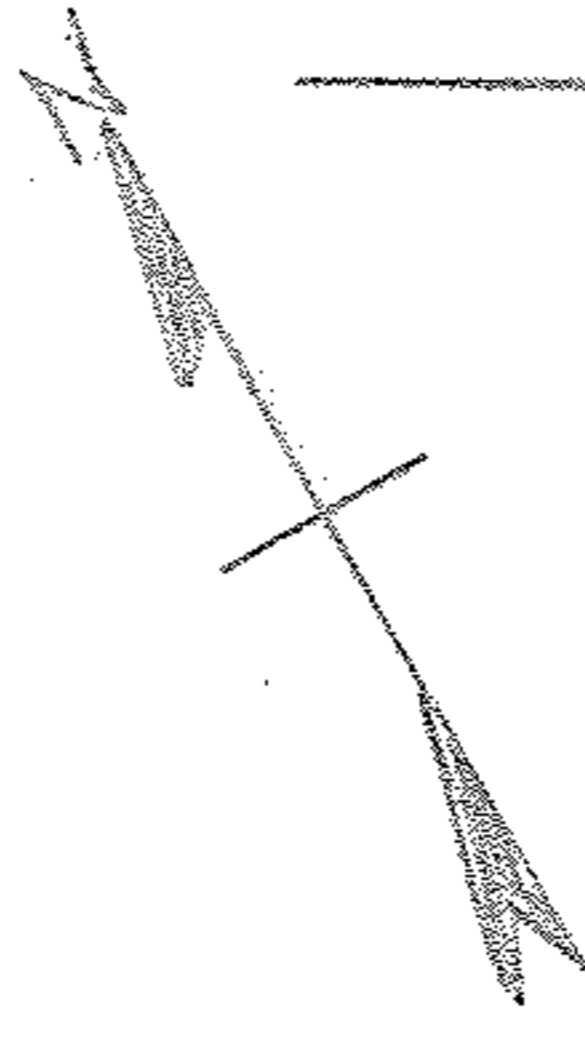
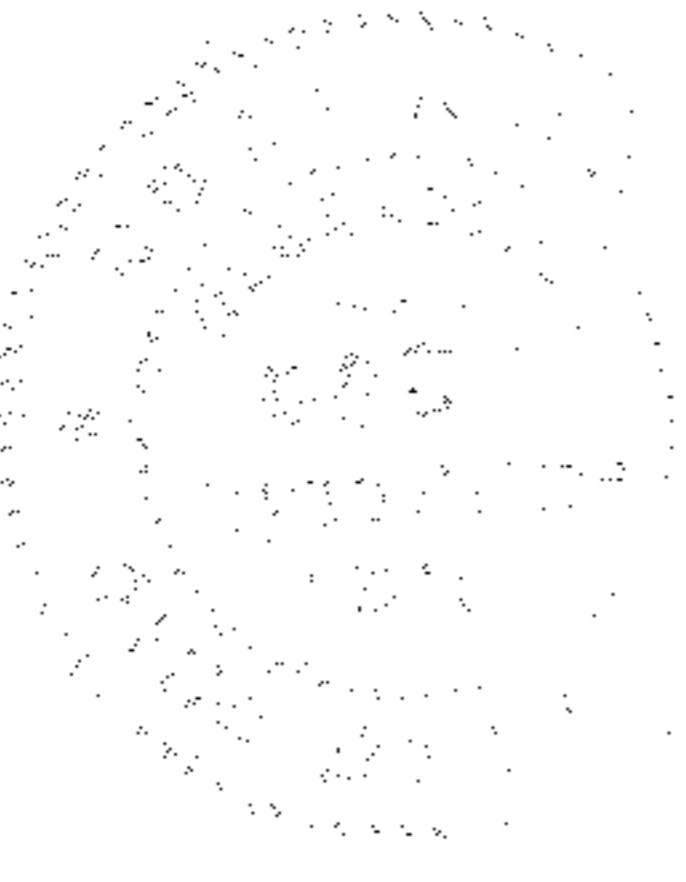


TOPOGRAPHICAL MAP

FOR

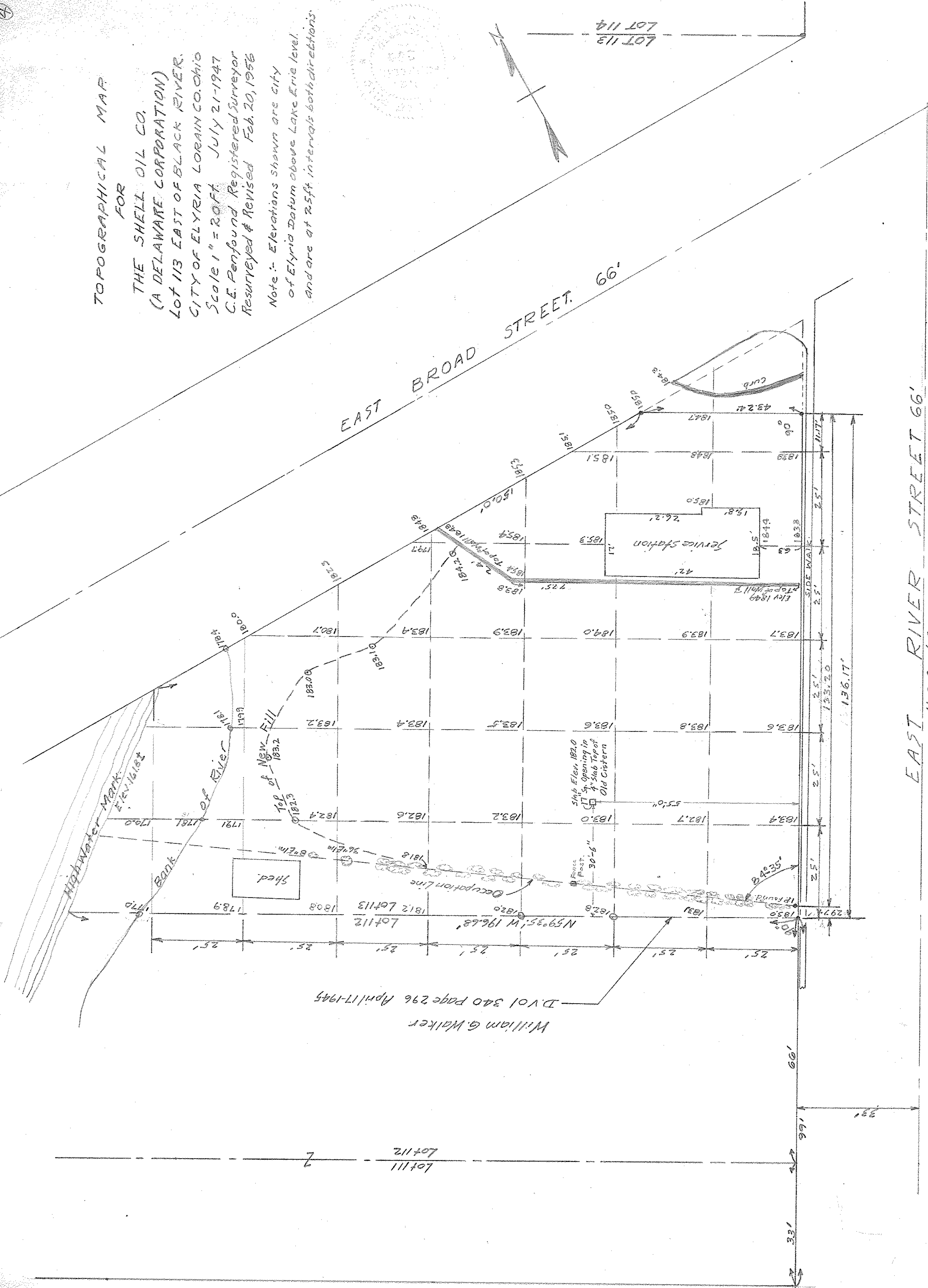
THE SHELL OIL CO.
 (A DELAWARE CORPORATION)
 LOT 113 EAST OF BLACK RIVER,
 CITY OF ELYRIA LORAIN CO. OHIO
 Scale 1" = 20 FT July 21-1947
 C.E. Penfound Registered Surveyor
 Resurveyed & Revised Feb 20, 1956

Note: - Elevations shown are city
 of Elyria Datum above Lake Erie level,
 and are at 2.5ft intervals both directions.



EAST BROAD STREET 66'

LOT 113
 LOT 114



William G. Walker
 D.V. 01 340 Page 296 April 17-1945

EAST RIVER STREET 66'

N-30°25'E

121.0
 06-25-113 000-0014-002

06-25-113