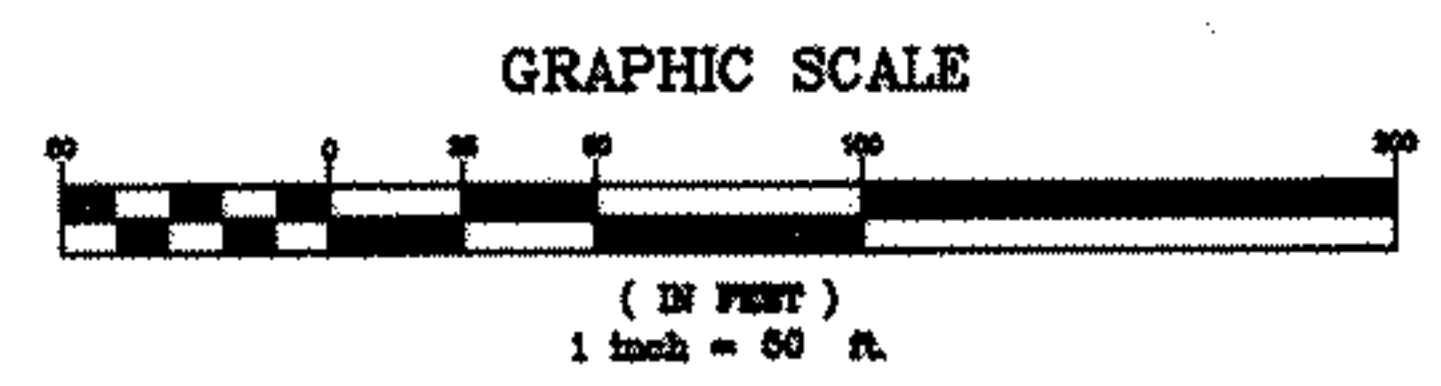
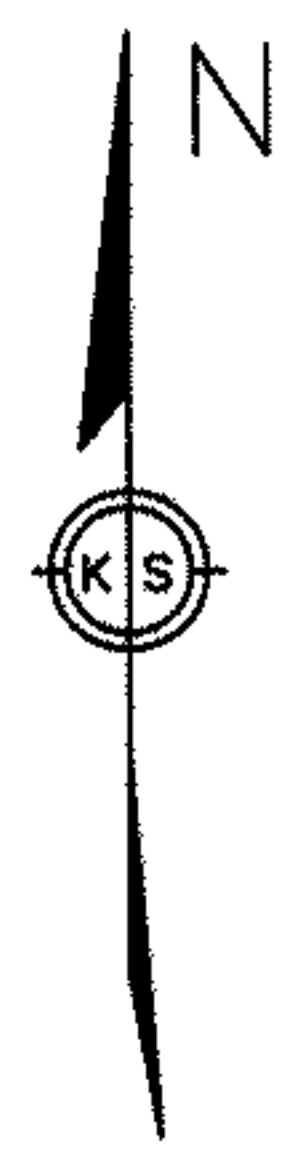


3-L 50/48, 49

3-00-003-A PLAT OUT

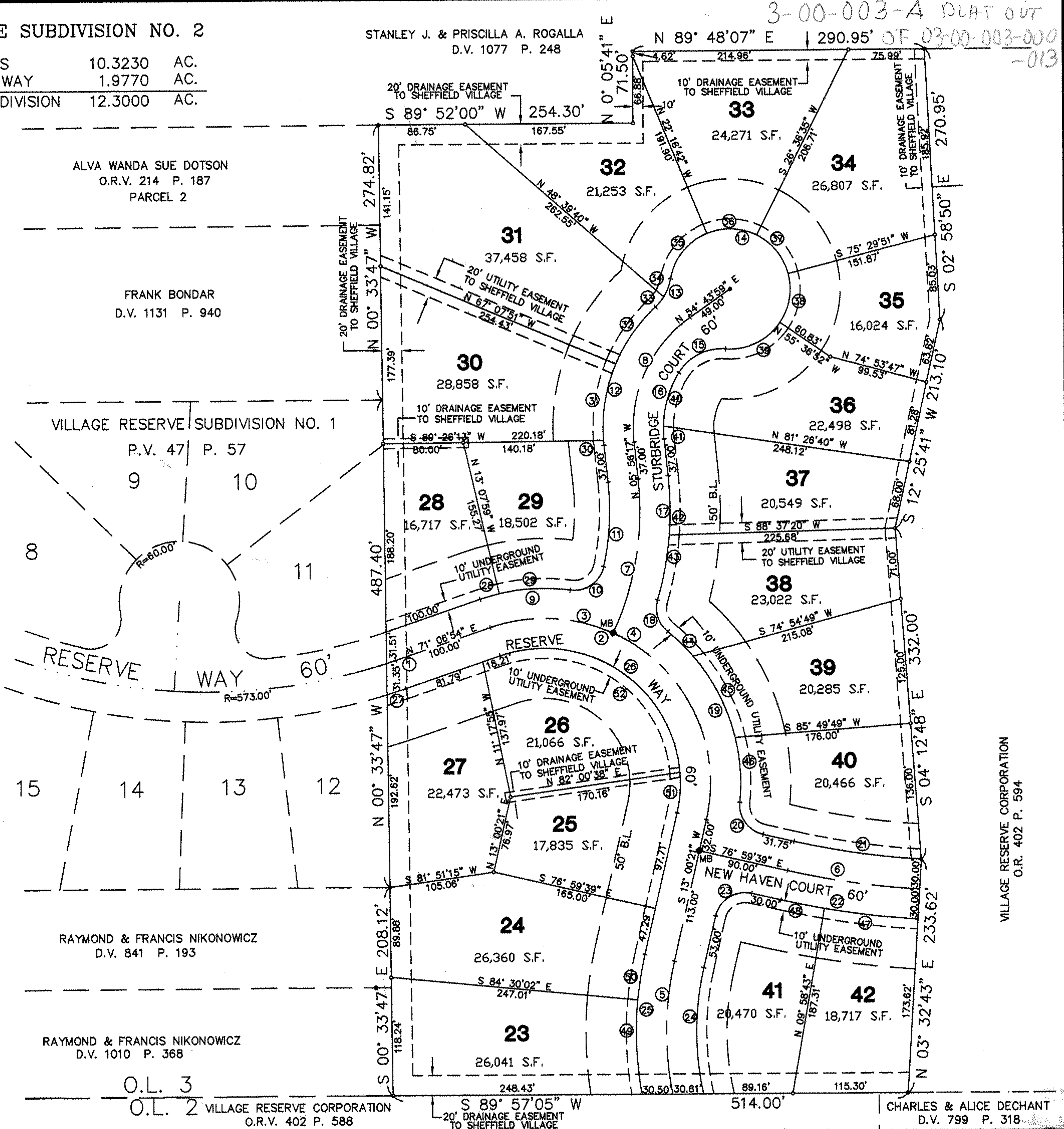
VILLAGE RESERVE SUBDIVISION NO. 2

AREA IN 20 SUBLOTS 10.3230 AC.
 AREA IN RIGHT-OF-WAY 1.9770 AC.
 TOTAL AREA IN SUBDIVISION 12.3000 AC.



LEGEND
 ◆ IRON PIN FOUND
 ◆ IRON PIN SET
 ◆ MONUMENT BOX SET

LOT/CURVE	RADIUS	LENGTH	TANGENT	CHORD	BEARING	DELTA
CL 1	573.00'	9.91'	4.95'	9.91'	N 71° 36' 37" E	00° 59' 26"
CL 2	185.00'	351.02'	297.00'	288.47'	N 47° 56' 22" W	121° 53' 27"
CL 3	165.00'	125.72'	66.09'	122.70'	N 87° 03' 28" W	43° 39' 15"
CL 4	165.00'	225.30'	134.18'	208.20'	N 26° 06' 45" W	78° 14' 12"
CL 5	320.00'	133.79'	67.89'	132.82'	S 01° 01' 41" W	23° 57' 21"
CL 6	809.70'	133.70'	67.00'	133.54'	S 81° 43' 28" E	09° 27' 38"
CL 7	295.00'	158.10'	81.00'	156.22'	N 09° 24' 56" E	30° 42' 26"
CL 8	135.00'	142.95'	79.00'	136.37'	S 24° 23' 51" W	60° 40' 16"
R/W 9	195.00'	91.03'	46.36'	90.20'	S 84° 29' 16" W	26° 44' 44"
R/W 10	30.00'	44.74'	27.70'	40.71'	N 55° 08' 19" E	85° 26' 39"
R/W 11	265.00'	84.89'	42.81'	84.53'	N 03° 14' 22" E	18° 21' 17"
R/W 12	185.00'	152.82'	82.39'	147.42'	S 20° 35' 42" W	53° 03' 58"
R/W 13	50.00'	32.42'	16.80'	31.86'	N 28° 33' 05" E	37° 09' 13"
R/W 14	60.00'	277.15'	65.88'	88.72'	N 37° 41' 59" W	284° 39' 03"
R/W 15	50.00'	54.94'	30.62'	52.22'	S 63° 08' 47" W	62° 57' 32"
R/W 16	105.00'	68.91'	35.75'	67.68'	S 12° 51' 52" W	37° 36' 17"
R/W 17	325.00'	125.58'	63.57'	124.78'	N 05° 07' 48" E	22° 08' 09"
R/W 18	30.00'	35.09'	19.86'	33.12'	S 17° 18' 21" E	67° 00' 27"
R/W 19	195.00'	192.86'	105.14'	185.09'	N 22° 28' 34" W	56° 40' 01"
R/W 20	30.00'	43.38'	26.47'	39.70'	S 35° 34' 06" E	82° 51' 05"
R/W 21	779.70'	128.74'	64.52'	128.60'	S 81° 43' 28" E	09° 27' 38"
R/W 22	839.70'	138.65'	69.48'	138.49'	S 81° 43' 28" E	09° 27' 38"
R/W 23	30.00'	47.12'	30.00'	42.43'	S 58° 00' 21" W	90° 00' 00"
R/W 24	290.00'	127.04'	64.56'	128.03'	S 00° 27' 22" W	25° 05' 58"
R/W 25	350.00'	140.57'	71.24'	139.83'	S 01° 30' 01" W	23° 00' 41"
R/W 26	135.00'	287.20'	243.00'	236.02'	N 47° 56' 22" W	121° 53' 27"
R/W 27	803.00'	19.78'	9.88'	19.76'	N 72° 03' 15" E	01° 52' 41"
28	195.00'	19.58'	9.80'	19.57'	S 73° 59' 28" W	05° 45' 07"
29	195.00'	71.45'	36.13'	71.05'	S 87° 21' 50" W	20° 59' 37"
30	165.00'	4.87'	2.44'	4.87'	S 05° 05' 30" E	01° 41' 34"
30 31	165.00'	78.08'	39.79'	77.36'	S 09° 18' 43" W	27° 06' 52"
31 32	165.00'	69.86'	35.46'	69.34'	S 34° 59' 55" W	24° 15' 33"
31 33	50.00'	13.03'	6.55'	12.99'	N 39° 39' 50" E	14° 55' 44"
32 34	50.00'	19.39'	9.82'	19.27'	N 21° 05' 13" E	22° 13' 29"
32 35	60.00'	60.47'	33.09'	57.95'	S 38° 50' 54" W	57° 44' 50"
33 36	60.00'	51.20'	27.27'	49.66'	N 87° 50' 03" W	48° 53' 16"
34 37	60.00'	51.20'	27.27'	49.66'	N 38° 56' 47" W	48° 53' 16"
35 38	60.00'	51.20'	27.27'	49.66'	N 08° 58' 30" E	48° 53' 16"
36 39	60.00'	63.08'	34.81'	60.22'	N 64° 30' 20" E	60° 14' 28"
36 40	105.00'	56.18'	28.77'	55.49'	S 16° 20' 41" W	30° 38' 39"
37 41	105.00'	12.76'	6.39'	12.75'	S 02° 27' 27" E	06° 57' 39"
37 42	325.00'	59.29'	29.73'	59.21'	N 00° 42' 41" W	10° 27' 11"
38 43	325.00'	66.27'	33.25'	66.15'	N 10° 21' 23" E	11° 40' 58"
38 44	195.00'	35.31'	17.71'	35.27'	N 45° 37' 17" W	10° 22' 35"
39 45	195.00'	92.21'	46.98'	91.36'	N 26° 53' 10" W	27° 05' 39"
40 46	195.00'	65.33'	32.98'	65.03'	N 03° 44' 27" W	19° 11' 47"
42 47	839.70'	94.28'	47.19'	94.23'	S 83° 14' 17" E	06° 25' 59"
41 48	839.70'	44.37'	22.19'	44.36'	S 78° 30' 28" E	03° 01' 39"
23 49	350.00'	94.71'	47.65'	94.43'	S 02° 15' 11" E	15° 30' 18"
24 50	350.00'	45.85'	22.96'	45.82'	S 09° 15' 10" W	07° 30' 23"
25 51	135.00'	40.85'	20.58'	40.89'	N 04° 20' 17" E	17° 20' 09"
26 52	135.00'	246.35'	174.53'	213.57'	N 56° 36' 27" W	104° 33' 18"



DATE	BY	DESCRIPTION
12-16-92	JEC	
	CRD	
	PLA	

VILLAGE RESERVE SUBDIVISION NO. 2
 RECORD PLAT
 PART OF ORIGINAL LOT NO. 3
 SHEFFIELD TOWNSHIP * LORAIN COUNTY * OHIO



KS ASSOCIATES, INC.
 ENGINEERS/SURVEYORS
 454 Middle Avenue
 Elyria, Ohio 44028
 ELYRIA (216) 322-6517 * LORAIN (216) 244-6757

SHEET 2 OF 2
 JOB NO. 92215

VILLAGE RESERVE CORPORATION
 O.R. 402 P. 594

CHARLES & ALICE DECHANT
 D.V. 799 P. 318

O.L. 3
 O.L. 2 VILLAGE RESERVE CORPORATION
 O.R.V. 402 P. 588