

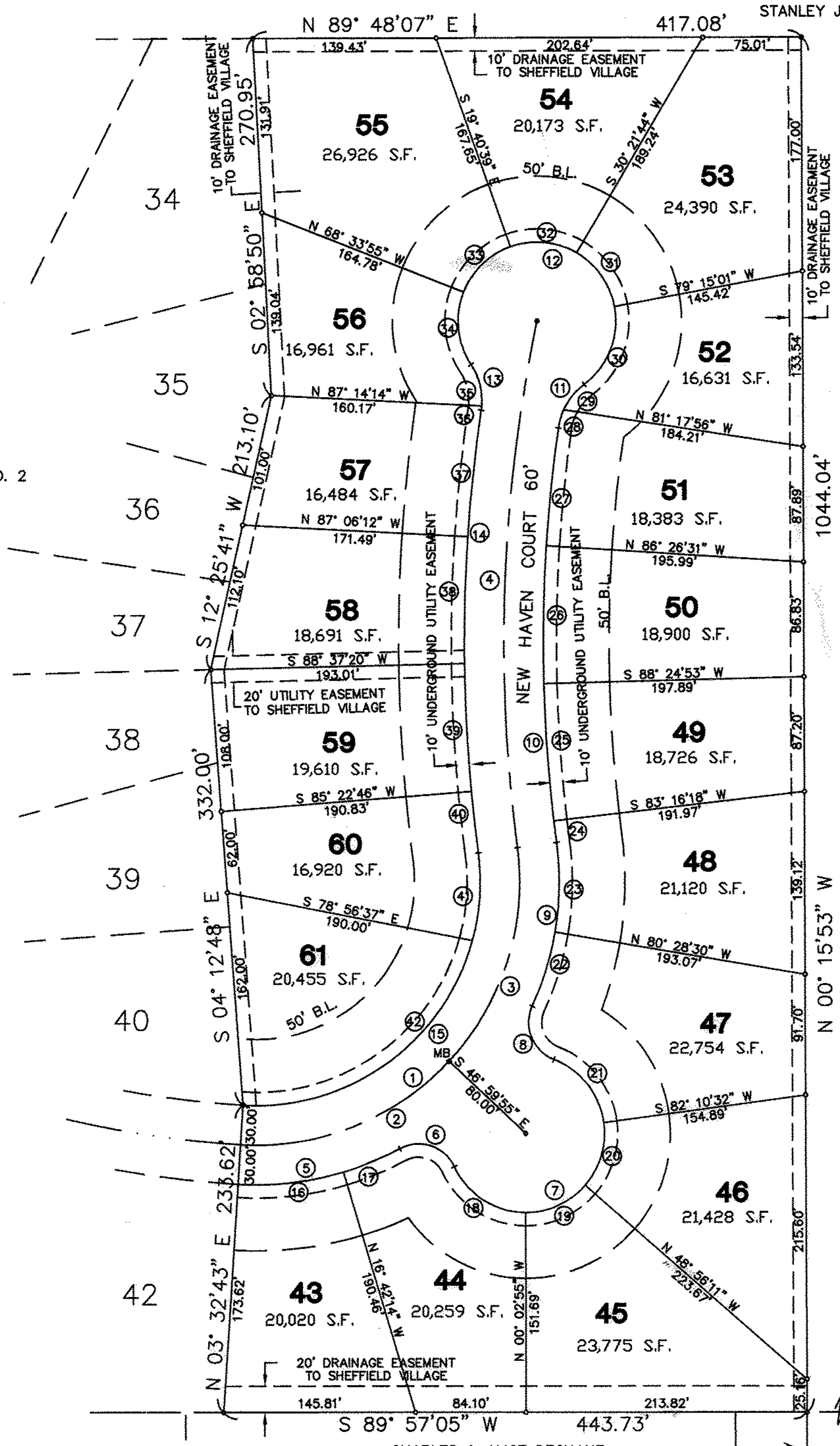
VILLAGE RESERVE SUBDIVISION NO. 3

AREA IN 19 SUBLOTS	8.7835	AC.
AREA IN RIGHT-OF-WAY	1.4911	AC.
TOTAL AREA IN SUBDIVISION	10.2746	AC.

VILLAGE RESERVE SUBDIVISION NO. 2

CURVE TABLE

LOT	CURVE	RADIUS	LENGTH	TANGENT	CHORD	BEARING	DELTA
CL 1	1	200.00'	352.86'	243.00'	308.85'	N 43° 00'05" E	101° 05'17"
CL 2	2	200.00'	176.43'	94.42'	170.77'	N 68° 16'24" E	50° 32'39"
CL 3	3	200.00'	176.43'	94.42'	170.77'	N 17° 43'45" E	50° 32'39"
CL 4	4	1194.40'	402.16'	203.00'	400.26'	S 02° 06'11" W	19° 17'30"
R/W 5	5	230.00'	127.76'	65.58'	126.13'	N 77° 37'55" E	31° 49'38"
R/W 6	6	30.00'	48.86'	31.78'	43.63'	N 71° 37'41" W	93° 18'27"
R/W 7	7	60.00'	234.64'	149.32'	111.24'	N 43° 00'05" E	224° 02'56"
R/W 8	8	30.00'	48.86'	31.78'	43.63'	S 22° 22'10" E	93° 18'27"
R/W 9	9	230.00'	127.76'	65.58'	126.13'	N 08° 22'15" E	31° 49'38"
R/W 10	10	1164.40'	315.85'	158.90'	314.88'	S 00° 13'41" W	15° 32'30"
R/W 11	11	50.00'	39.49'	20.84'	38.47'	S 30° 37'24" W	45° 14'57"
R/W 12	12	60.00'	279.22'	63.65'	87.32'	N 80° 03'48" W	266° 37'20"
R/W 13	13	50.00'	36.32'	19.00'	35.52'	N 12° 33'58" W	41° 37'01"
R/W 14	14	1224.40'	337.32'	169.74'	336.26'	S 00° 20'59" W	15° 47'06"
R/W 15	15	170.00'	299.93'	206.55'	262.52'	N 43° 00'05" E	101° 05'17"
43 16	16	230.00'	81.29'	41.07'	80.86'	N 83° 25'15" E	20° 14'58"
44 17	17	230.00'	46.48'	23.32'	46.40'	N 67° 30'26" E	11° 34'40"
44 18	18	60.00'	68.15'	38.28'	64.54'	S 57° 30'41" E	65° 04'27"
45 19	19	60.00'	51.20'	27.27'	49.66'	N 65° 30'27" E	48° 53'17"
46 20	20	60.00'	51.20'	27.27'	49.66'	N 16° 37'11" E	48° 53'17"
47 21	21	60.00'	64.09'	35.48'	61.08'	N 38° 25'25" W	61° 11'55"
47 22	22	230.00'	59.25'	29.79'	59.08'	N 16° 54'17" E	14° 45'33"
48 23	23	230.00'	68.51'	34.51'	68.26'	N 00° 59'28" E	17° 04'04"
48 24	24	1164.40'	16.55'	8.26'	16.55'	S 07° 08'08" E	00° 48'52"
49 25	25	1164.40'	104.52'	52.30'	104.49'	S 04° 09'24" E	05° 08'35"
50 26	26	1164.40'	104.52'	52.30'	104.49'	S 00° 59'11" W	05° 08'35"
51 27	27	1164.40'	90.25'	45.15'	90.23'	S 05° 46'42" W	04° 28'27"
51 28	28	50.00'	14.45'	7.27'	14.40'	S 16° 16'36" W	16° 33'21"
52 29	29	50.00'	25.04'	12.79'	24.78'	S 38° 54'05" W	28° 41'37"
52 30	30	60.00'	67.02'	37.49'	63.59'	N 21° 14'57" E	63° 59'52"
53 31	31	60.00'	51.20'	27.27'	49.66'	N 35° 11'37" W	48° 53'16"
54 32	32	60.00'	52.40'	28.00'	50.75'	N 84° 39'27" W	50° 02'23"
55 33	33	60.00'	51.20'	27.27'	49.66'	S 45° 52'43" W	48° 53'16"
56 34	34	60.00'	57.40'	31.11'	55.23'	S 05° 58'12" E	54° 48'33"
56 35	35	50.00'	33.05'	17.15'	32.45'	N 14° 26'27" W	37° 52'04"
57 36	36	50.00'	3.27'	1.64'	3.27'	N 06° 22'03" E	03° 44'57"
57 37	37	1224.40'	96.88'	48.47'	96.86'	S 05° 58'39" W	04° 32'01"
58 38	38	1224.40'	96.22'	48.14'	96.20'	S 01° 27'26" W	04° 30'10"
59 39	39	1224.40'	97.14'	48.60'	97.11'	S 03° 04'01" E	04° 32'44"
60 40	40	1224.40'	47.08'	23.54'	47.08'	S 06° 26'29" E	02° 12'11"
60 41	41	170.00'	67.46'	34.18'	67.01'	N 03° 49'29" E	22° 44'06"
61 42	42	170.00'	232.48'	138.53'	214.78'	N 54° 22'07" E	78° 21'12"



STANLEY J. & PRISCILLA A. ROGALLA
D.V. 1077 P. 248

50/48
49

PLAT OUT OF
03-00-003-000-013

VILLAGE RESERVE SUBDIVISION NO. 3
RECORD PLAT
PART OF ORIGINAL LOT NO. 3
SHEFFIELD TOWNSHIP * LORAIN COUNTY * OHIO



KS ASSOCIATES, INC.
ENGINEERS/SURVEYORS
464 Middle Avenue
Kyrta, Ohio 44088
ELYRIA (816) 322-0317 * LORAIN (816) 244-5757

STANLEY J. & PRISCILLA A. ROGALLA
D.V. 1077 P. 248

CHARLES & ALICE DECHANT
D.V. 799 P. 318

VILLAGE RESERVE NO. 2
O.R.V. 402 P. 594

SHEET	2	OF	2
JOB NO.	92216		