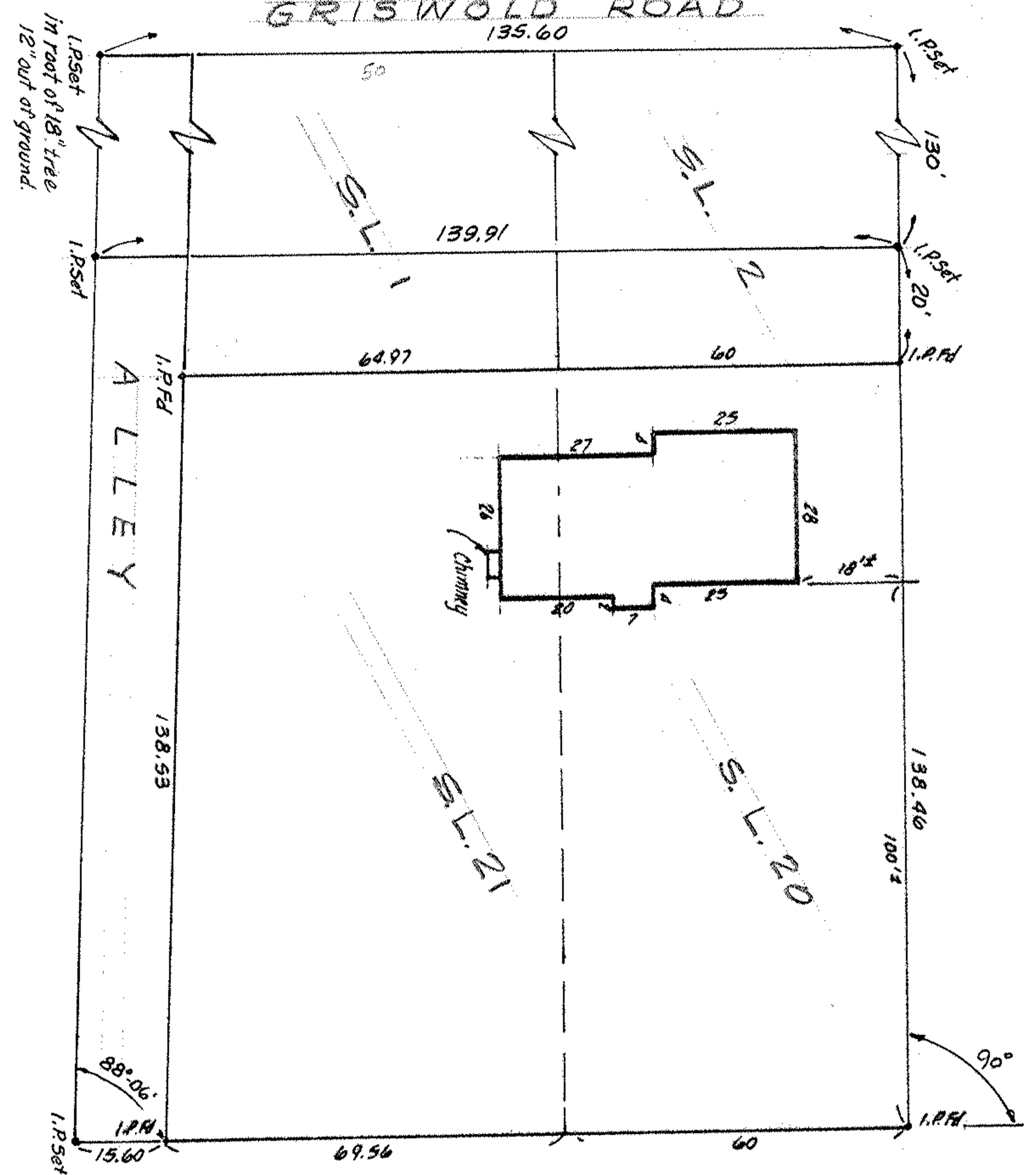


GRISWOLD ROAD



LAWRENCE CT. 50'



1"=30'

06-24-038-102-034 thru -037
6-42

SUBLOTS #1, 2, 20, 21 of ELYRIA HEIGHTS ALLOTMENT
PLUS PLATTED ALLEY

PLAT VOL. 6 PAGE 48
PART of ORIG. ELYRIA
LORAIN COUNTY

TWP. LOT 38 WEST of BLACK RIVER
, OHIO

THIS IS A PLAT OF SURVEY:

FOR WALT GODLES
MCGLINCHY & ASSOCIATES
APR. 2 1982 # 827166

1.5set
in roof of 18" tree
12" out of ground.

88°06'
1.5set
15.60

1.5set
ALLEY
1.58.53

1.5set
130'
1.5set
20'
1.5set

1.5set
138.40
100'±
1.5set
90°

139.91

64.97

69.56

135.60

60

60

25

28

27

20

25

Chimney

S.L. 21

S.L. 20