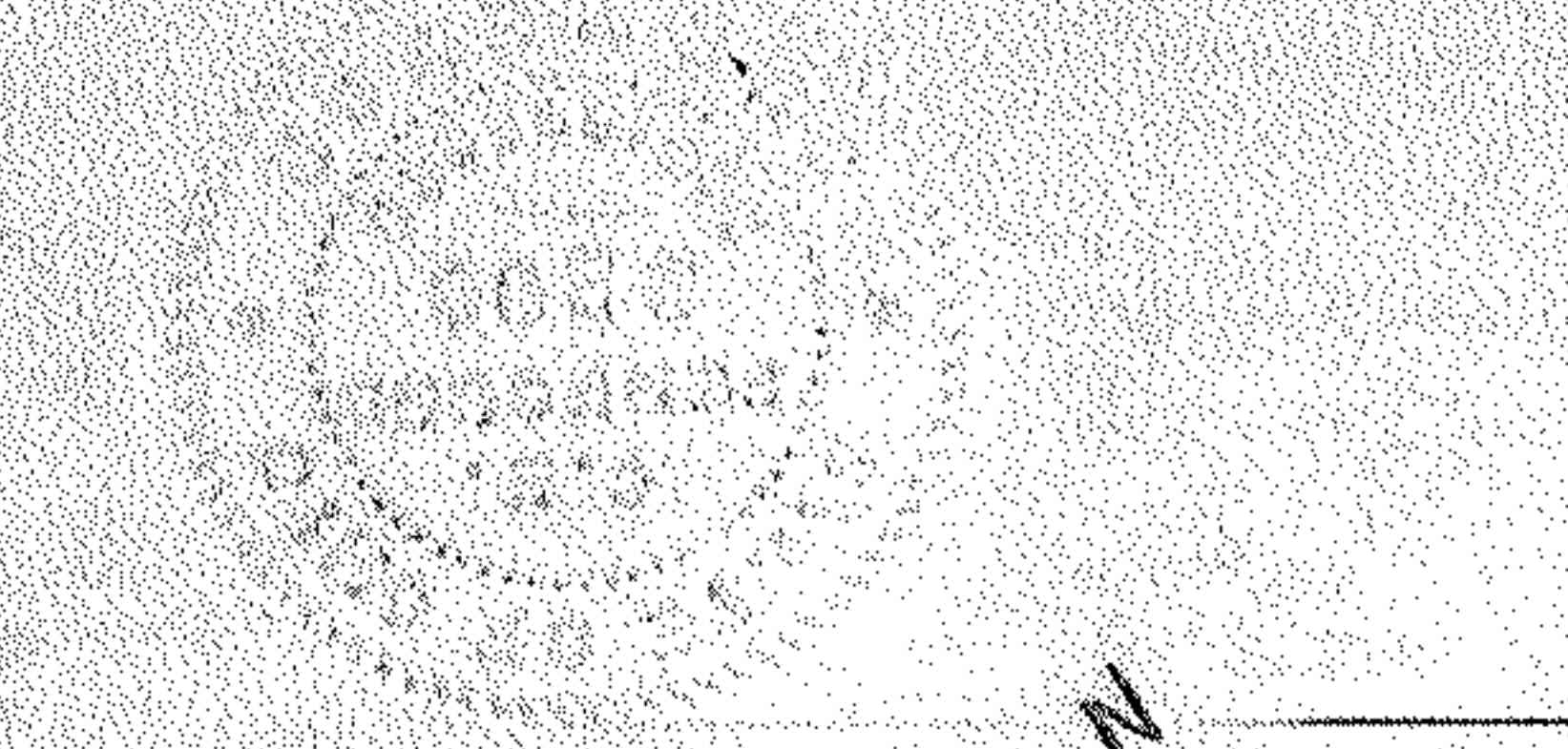


SURVEY MAP FOR

THE SHELL OIL COMPANY  
(A DELAWARE CORPORATION)  
LOT 113 EAST OF BLACK RIVER  
CITY OF ELYRIA LORAIN CO. OHIO  
Scale 1" = 30 FT July 21-1947  
C.E. Penfound Registered Surveyor  
Resurveyed & Revised Feb. 20-1956

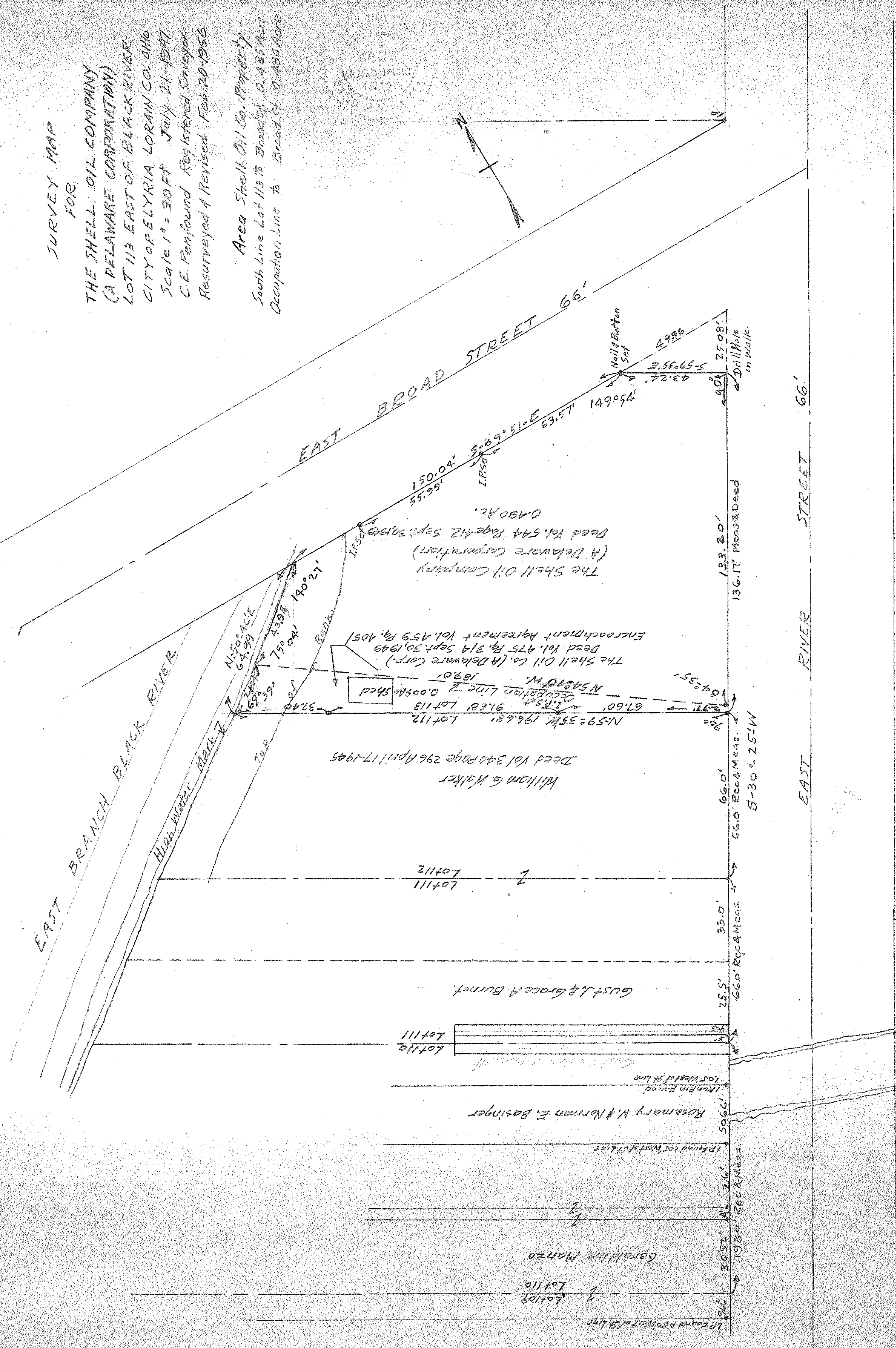
Area Shell Oil Co. Property  
South Line Lot 113 to Broad St. 0.485 Acre  
Occupation Line to Broad St. 0.480 Acre



EAST BRANCH BLACK RIVER  
High Water Mark

EAST BROAD STREET 66'

EAST RIVER STREET 66'



Deed Vol 340 Page 296 April 17-1945  
William G Walker

The Shell Oil Co. (A Delaware Corp.)  
Deed Vol. 475 Pg. 319 Sept. 30, 1949  
Encroachment Agreement Vol. 459 Pg. 405

The Shell Oil Company  
(A Delaware Corporation)  
Deed Vol. 544 Page 412 Sept. 30, 1949  
0.480 Ac.

Gust L & Grace A. Burnett

Rosemary W. & Norman E. Basinger

Geraldine Manzo

5-30°-25'-W  
66.0' Rec & Meas.

66.0' Rec & Meas.

1980' Rec & Meas.