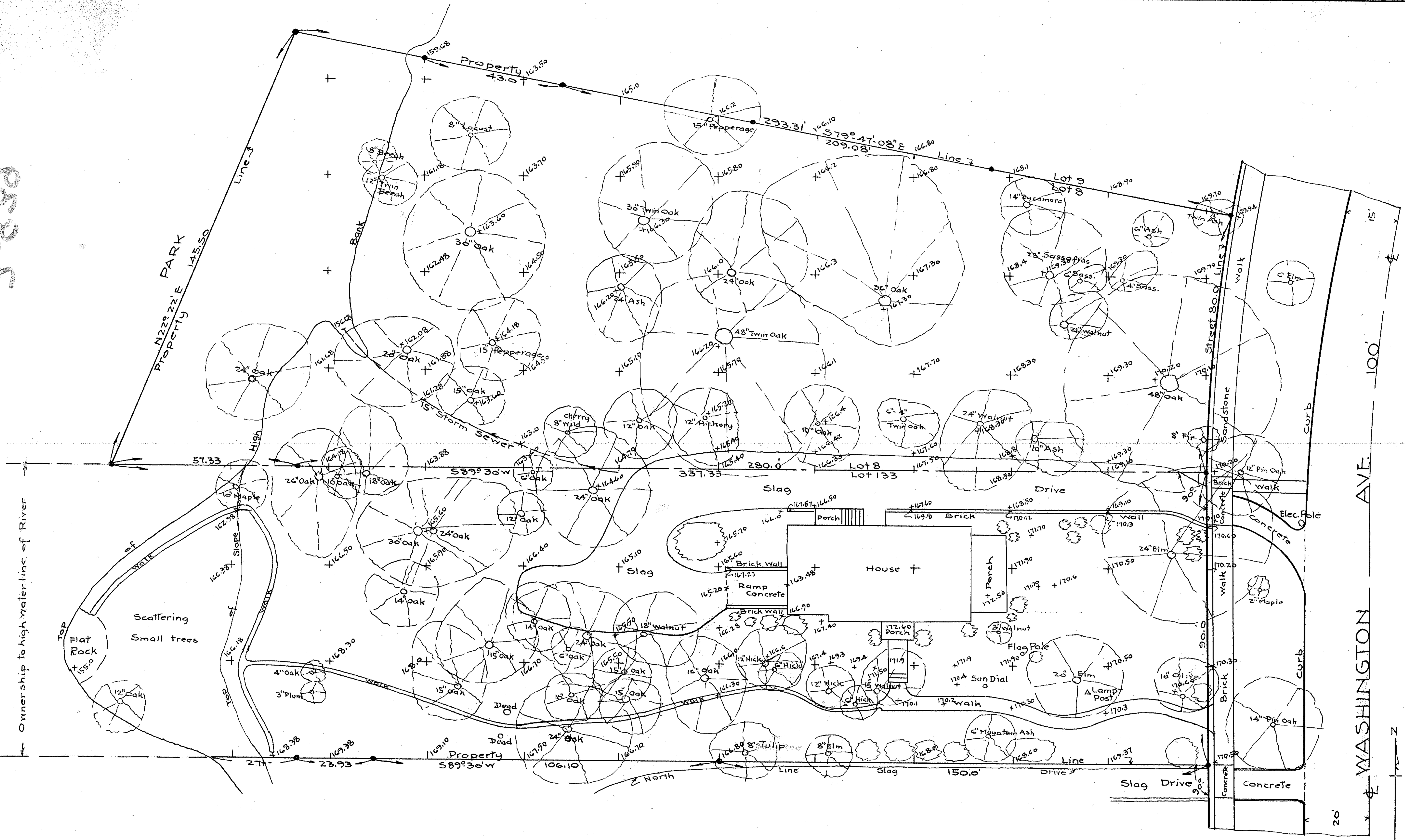


3838



Ownership to high water line of River

PPN 06-25-134-000-005

MAP Pg 6-101

Location Map for
CHAUNCEY B. & ELIZABETH F. SMYTHE,
 Lot 8-Elywood N#1- Map Vol-12-Pgs. 31-32.
 Lot 133 East of Black River, Elyria Twp.,
 Elyria - Lorain Co., Ohio.
 Scale 1" = 20'. Oct. 2- 1941.
 Note: Iron Pins set or found at all points marked thus •
 Bench Mark-Arrow, Hydrant, Columbus & Washington = 174.12.

J. W. Warden
 Civil Engineer