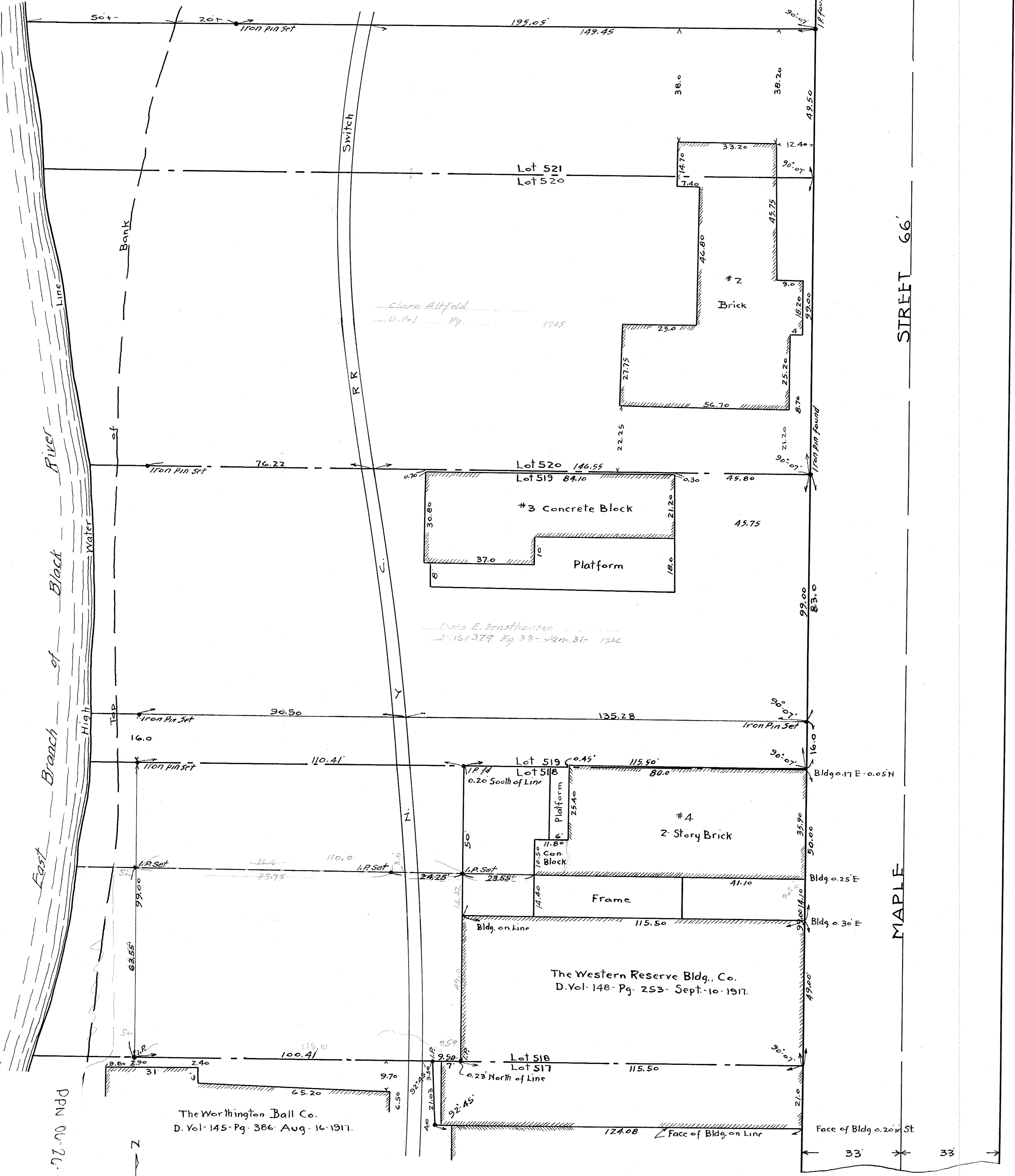


Carl P. Swiers
D. Vol. 324-Pg. 338- Feb. 20-1943.



East Branch of Black River
High Water Line
Bank
Switch
R.R.

MAPLE STREET 66'

The Worthington Bldg. Co.
D. Vol. 145-Pg. 386 Aug. 16-1917.

The Western Reserve Bldg. Co.
D. Vol. 148-Pg. 253- Sept. 10-1917.

Regal Land Co.
D. Vol. 379 Pg. 272 Feb. 4-1946

Survey for
THE I T S CO.
Lots 518-519-520-521 Block 96
Between the Branches of Black River
H. E. Ely Addition
Map Vol. 1- Page 35
Elyria Lorain County Ohio
June 9 1945 Scale 1" = 20'
J. W. Warden, Registered Surveyor.
Revised Dec. 31 1945

300742 A