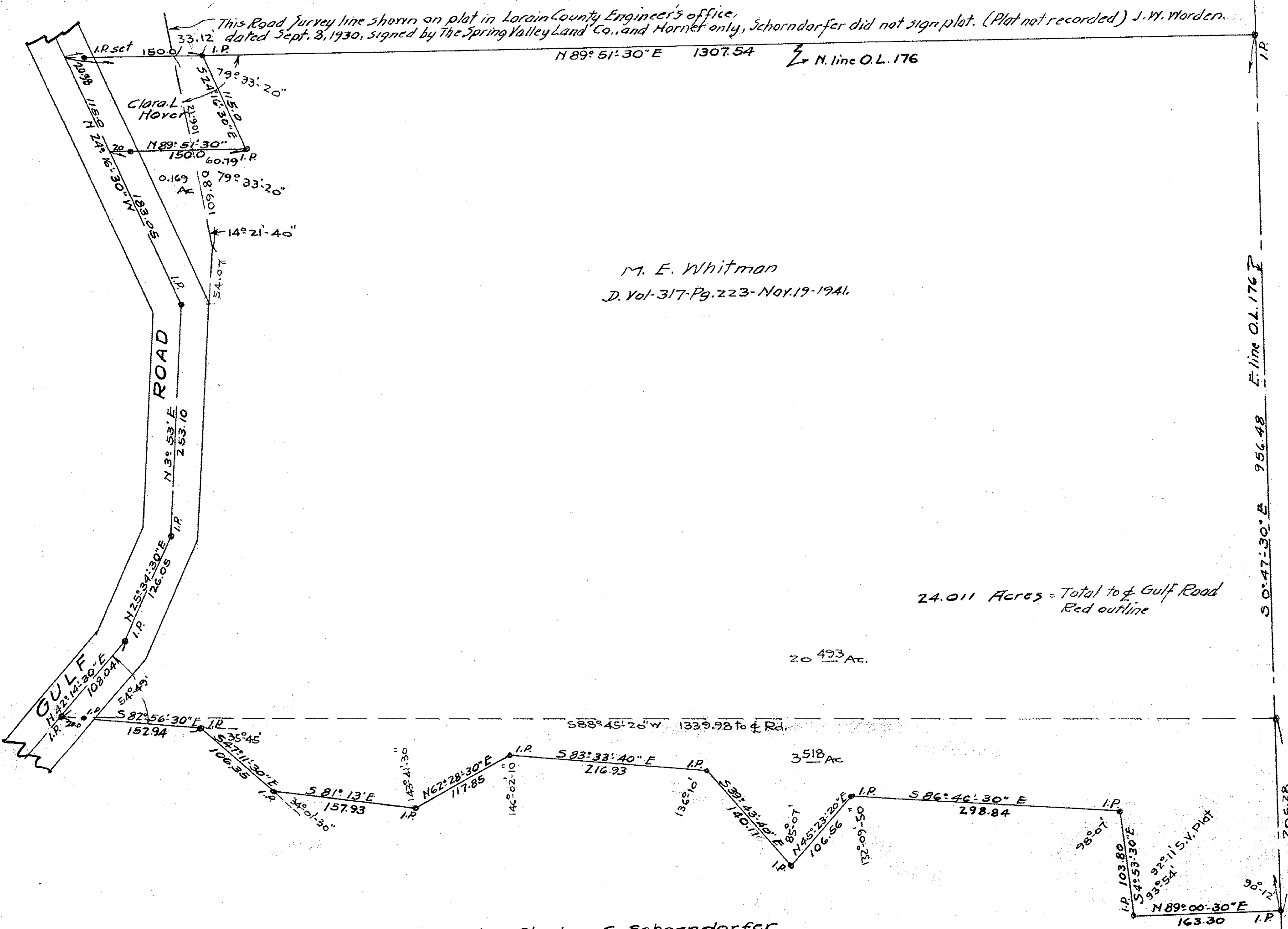


This Road Survey line shown on plat in Lorain County Engineer's office, dated Sept. 8, 1930, signed by The Spring Valley Land Co., and Horner only, Schorndorfer did not sign plat. (Plat not recorded) J.W. Warden.



M. E. Whitman
D. Vol-317-Pg.223-Nov.19-1941.

24.011 Acres = Total to Gulf Road
Red outline

Survey for Stephen C. Schorndorfer
Original Lot 176 East of River Elyria Twnp.
Lorain Co. Ohio. Scale 1"=100' June 30, 1926
Warden & Laundon. Civil Engineers.

300493B