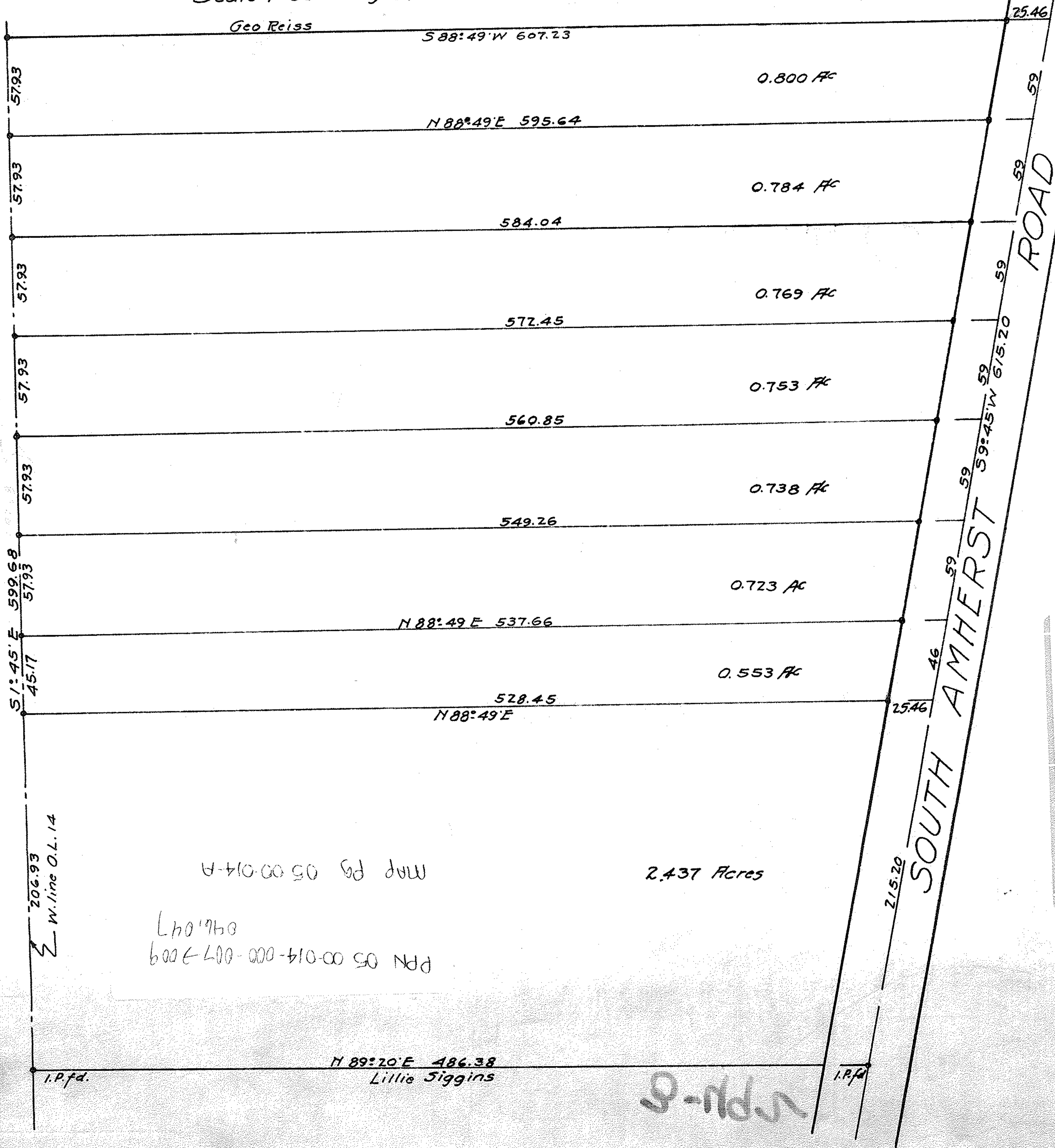


Survey for Henry Ott
 Original Lot 14 Amherst Twnp. Lorain Co. Ohio.
 Scale 1"=50 Feb'y 8, 1926 Warden & Loundon, Engineers



Geo Reiss

S 88:49' W 607.23

0.800 AC

N 88:49' E 595.64

0.784 AC

584.04

0.769 AC

572.45

0.753 AC

560.85

0.738 AC

549.26

0.723 AC

N 88:49' E 537.66

0.553 AC

528.45

N 88:49' E

2.437 Acres

MAP PG 05 00-014-A

L.H. 1910
 P.N. 05 00-014-000-007-009

N 89:20' E 486.38
 Lillie Siggins

1.Pfd.

1.Pfd.

SOUTH AMHERST ROAD

300-192

W.P.L.