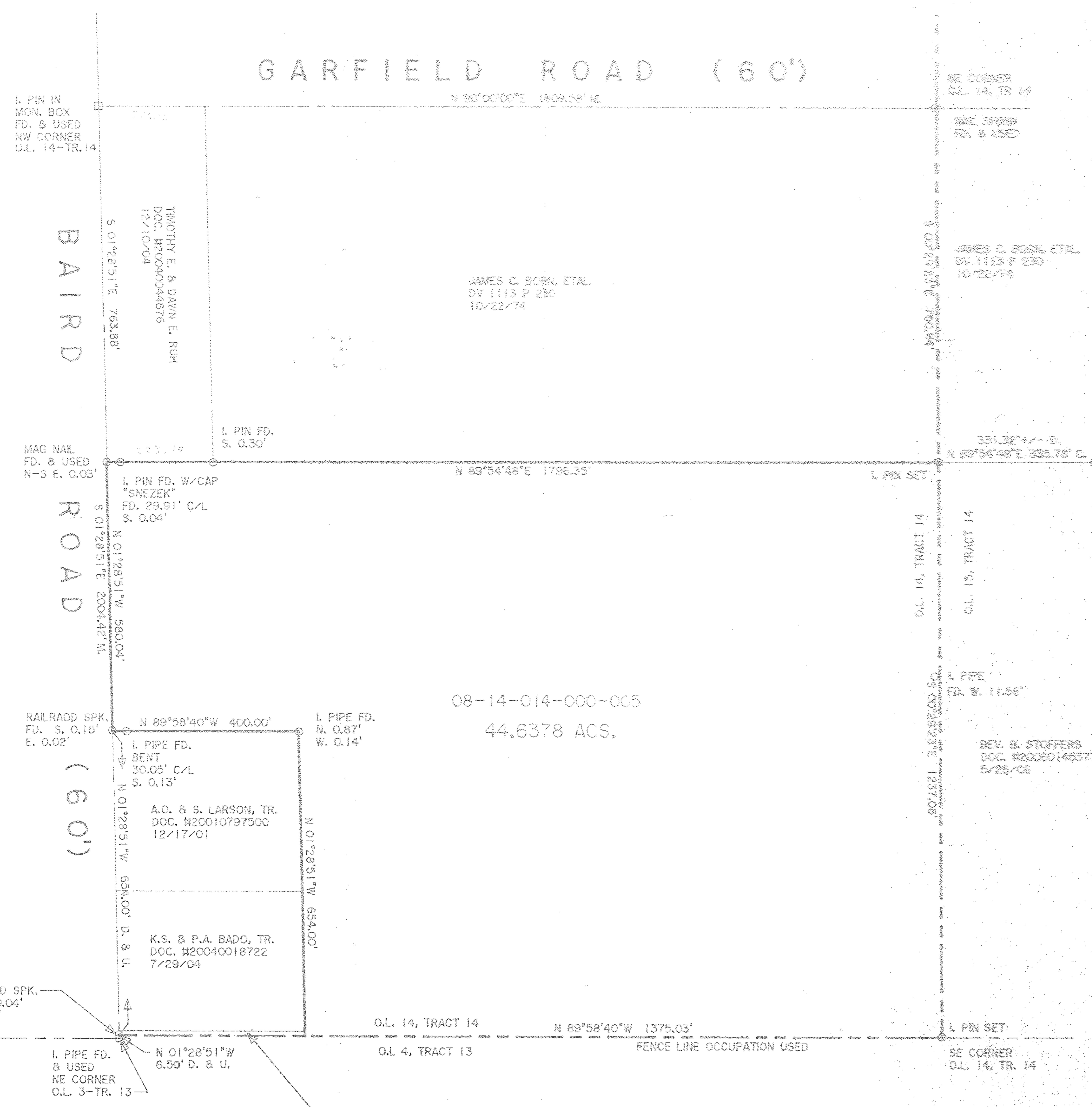
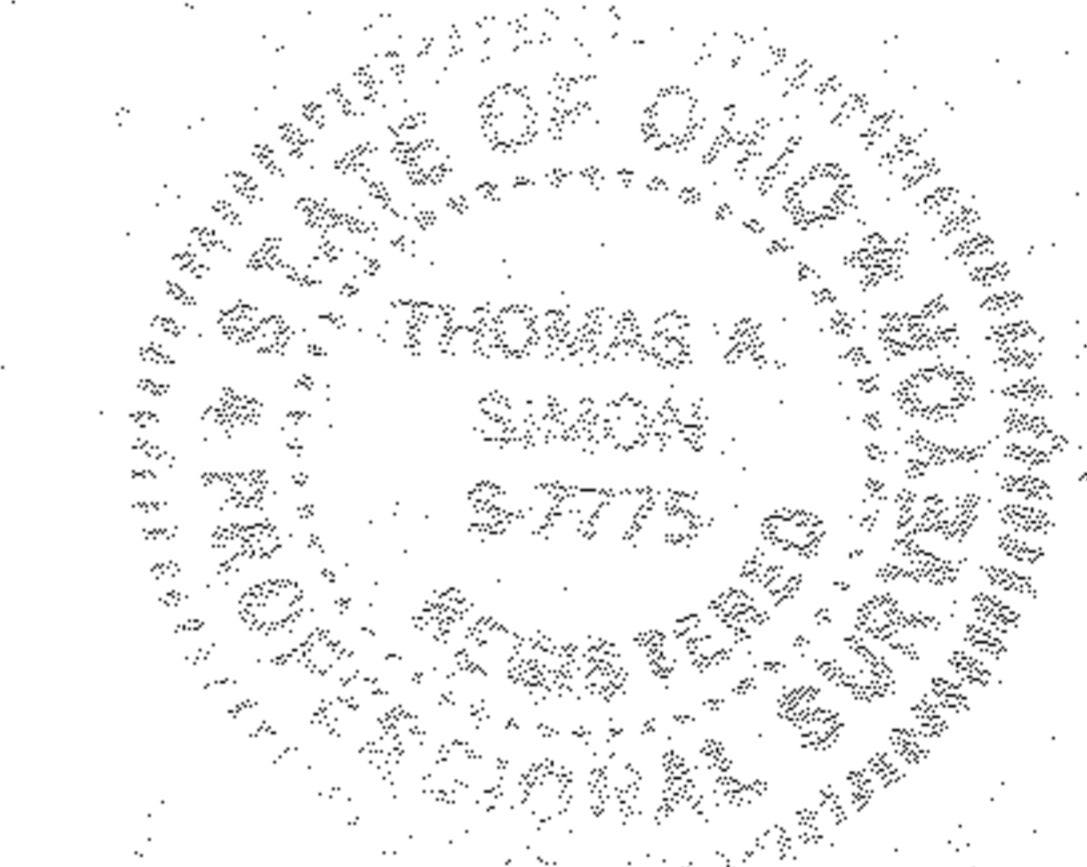


BASIS OF BEARINGS IS THE CENTERLINE OF GARFIELD ROAD (NORTH 90°00'00" EAST), IRON PINS SET ARE 3/8" DIAMETER, 36" LONG WITH PLASTIC CAPS "T. SIMON S-7775".



08-14-014-000-005
44.6378 ACS.

DIMENSIONS SHOWN ON THIS PLAT ARE EXPRESSED IN FEET AND DECIMAL PARTS THEREOF. ALL BEARINGS ARE TO AN ASSUMED MERIDIAN AND ARE USED TO INDICATE ANGLES ONLY. PERMANENT MONUMENTS WERE FOUND OR SET AT ALL POINTS INDICATED HEREON, ALL OF WHICH I CERTIFY TO BE CORRECT.



Thomas A. Simon
THOMAS A. SIMON
REG. PROFESSIONAL SURVEYOR
NO. 9-7775

REV. B. STOFFERS
DOC. H20060145377
5/25/06

09-01804-C
APPROVED
LORAIN CO.
MAY 2008
4/24/09
08-14-014
C.B.S.
09-01804-C

THOMAS SIMON & ASSOCIATES, INC.
PROFESSIONAL LAND SURVEYORS

150 SOUTH OLIVE STREET
ELYRIA, OHIO 44035
(440) 327-2925
FAX 327-2964

PLAT OF SURVEY
FOR
JAMES C. BORN, ETAL.

BEING KNOWN AS PART OF ORIGINAL HENRIETTA TOWNSHIP
LOT NO. 14, TRACT 14
COUNTY OF LORAIN STATE OF OHIO
NOVEMBER, 2008 SCALE: 1" = 200'