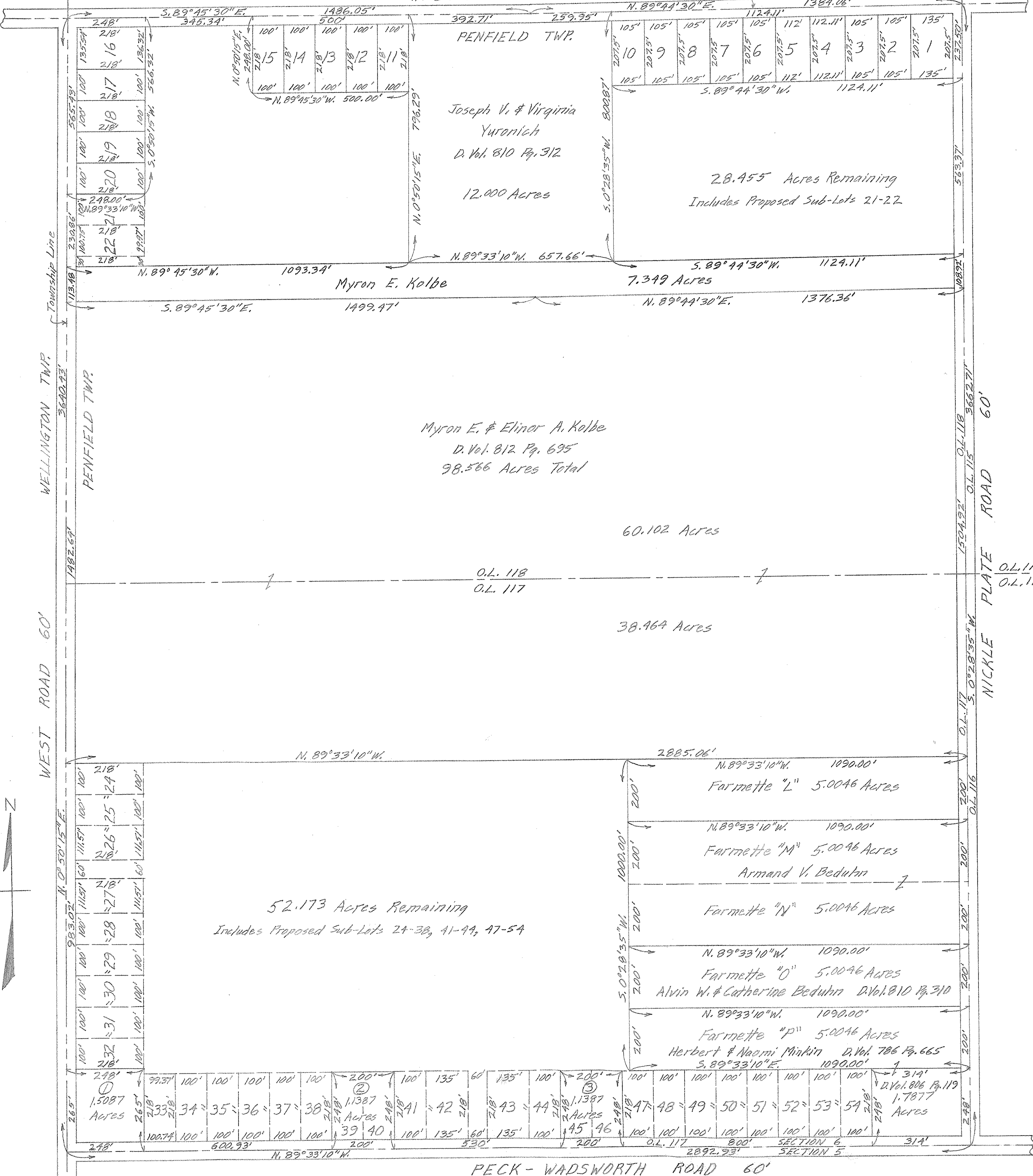


PITTSFIELD TWP.

LAGRANGE TWP WEBSTER ROAD 60'

Township Line



- ① Pinnacle Investment Co. - Plat. #2 D. Vol. 805 Pg. 31
- ② Sub-Lots 39 & 40 of First Proposed Plat
- ③ Sub-Lots 45 & 46 - Revision of First Proposed Plat

NIMROD SQUARE SUBDIVISION NO. 1  
 SUB-LOTS 1-20 PLAT VOL. 23 PG. 9  
 1 Liva Harrison Person & Maxine Person - D. Vol. 818 Pg. 436  
 2 James K. Stevens - D. Vol. 818 Pg. 442  
 16 & 17 Pinnacle Investment Co. - Plat. #1 D. Vol. 805 Pg. 31  
 18  
 19 & 20 Gary E. & Kathleen C. Penfound - D. Vol. 812 Pg. 697

NIMROD SQUARE DEVELOPMENT  
 ORIGINAL LOTS 117 & 118 SECTION NO. 6  
 PENFIELD TWP. - LORAIN COUNTY - OHIO  
 SCALE: 1"=200' OUTLINE SURVEY JANUARY-1959  
 Gary E. Penfound Reg. Surveyor No. 4457  
 Proposed Frontage Development  
 shown as Sub-Lots 21 thru 54.  
 Sub-Lot 23 eliminated December 1962  
 19-06-117, 118