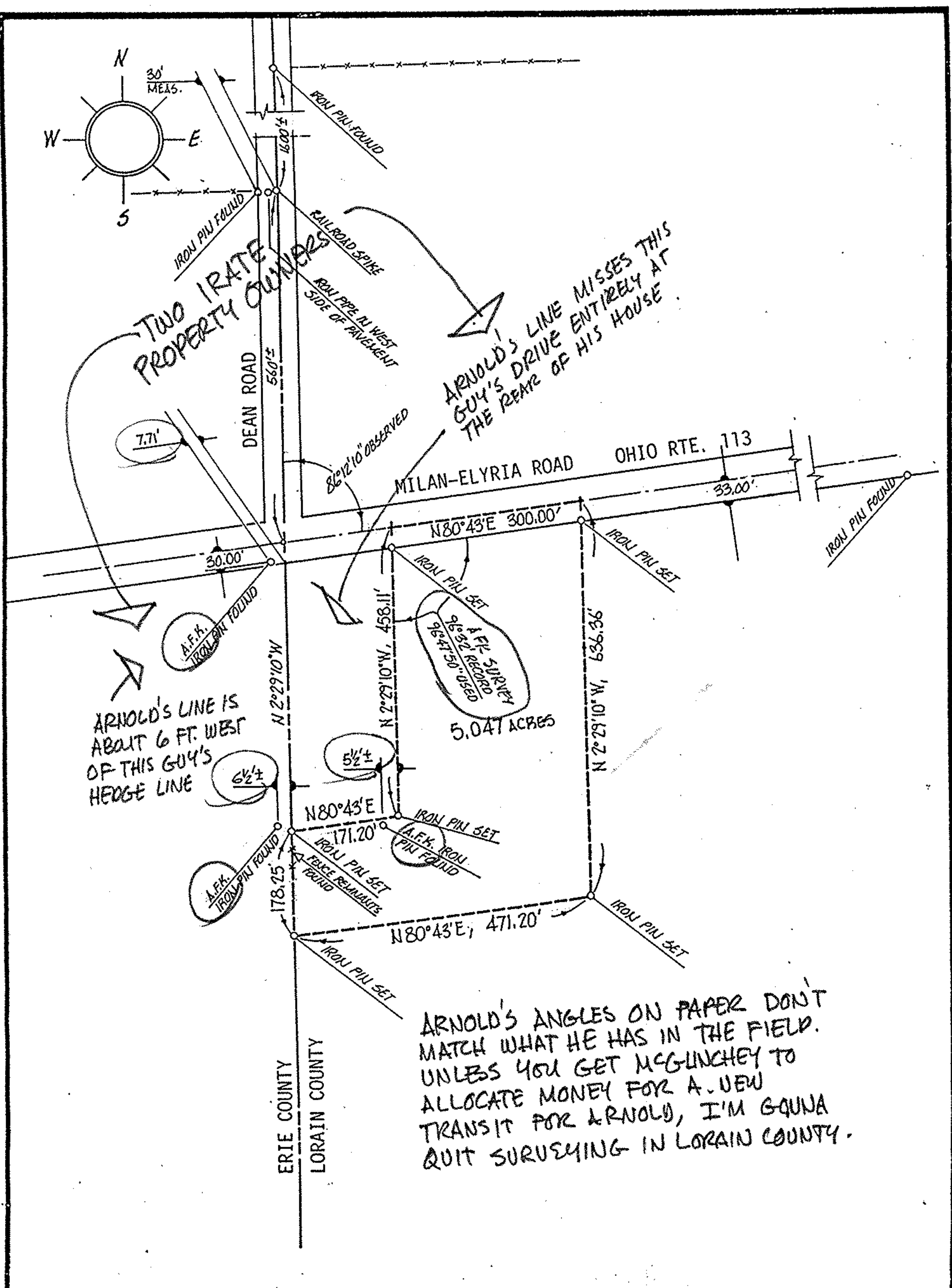


TWO IRATE
PROPERTY OWNERS

ARNOLD'S LINE MISSES THIS
GUY'S DRIVE ENTIRELY AT
THE REAR OF HIS HOUSE.

ARNOLD'S LINE IS
ABOUT 6 FT. WEST
OF THIS GUY'S
HEDGE LINE

ARNOLD'S ANGLES ON PAPER DON'T
MATCH WHAT HE HAS IN THE FIELD.
UNLESS YOU GET MCGINCHY TO
ALLOCATE MONEY FOR A NEW
TRANSIT FOR ARNOLD, I'M GONNA
QUIT SURVEYING IN LORAIN COUNTY.



ACREAGE 5.047

PREPARED FOR JOHN BELU BELU & SONS PAVING