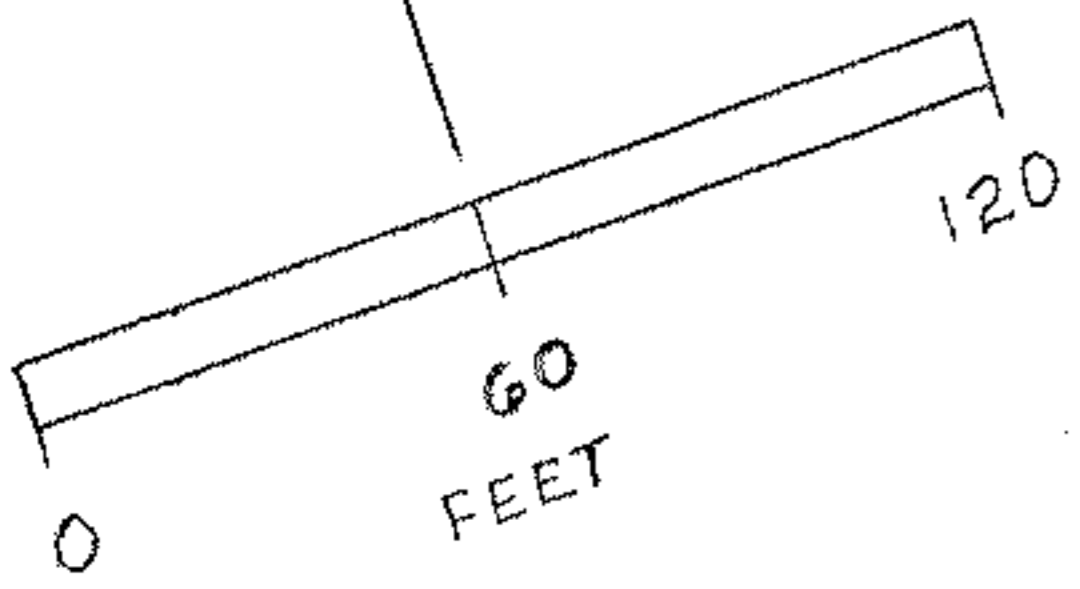


NORTH

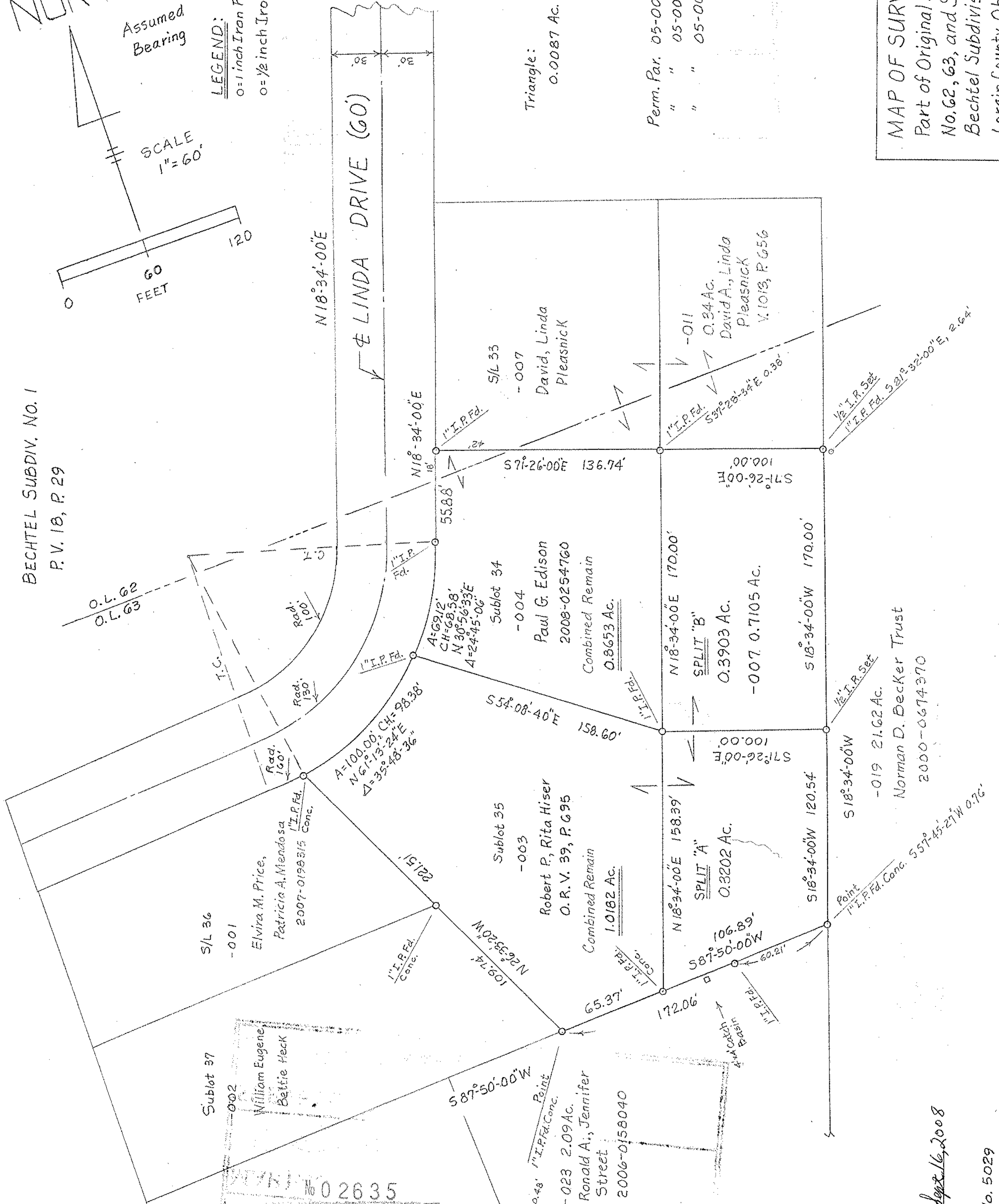
Assumed Bearing

SCALE  
1" = 60'



LEGEND:  
○ = 1 inch Iron Pipe Found  
○ = 1/2 inch Iron Rod Set

BECHTEL SUBDIV. NO. 1  
P.V. 18, P. 29



Triangle:  
0.0087 Ac. in O.L. 62

Perm. Par. 05-00-063-103-003  
" " 05-00-063-103-004  
" " 05-00-063-103-007

MAP OF SURVEY MADE  
Part of Original Amherst Twp. Lots  
No. 62, 63, and Sublots No. 34, 35  
Bechtel Subdivision No. 1, P.V. 18, P. 29,  
Lorain County, Ohio.  
For Robert P. Hiser September 2008

APPROVED  
LORAIN CO.  
PLANNING DEPT  
DATE 11-17-08  
05-00-063-103-007  
PAGE 5-00-063.B  
J. Hatfield  
#08-02635

Charles F. Waryu Sept 16, 2008  
CHARLES F. WARYU  
Registered Surveyor No. 5029

Point  
1/2" I.P. Set  
Norman D. Becker Trust  
2000-0674370

Point  
1/2" I.P. Set  
2000-0674370